

How to install Data Protection Manager 2019 (DPM) on Server 2019

In this post, I will show you the steps involved in installing DPM 2019. I will be installing it on Server 2019 with SQL Server 2017 and Reporting Server Services 2017.

Created a virtual machine with Server 2019 and installed all the updates. Restarted the server to install the pre req.

Prerequisites for installing DPM 2019

- PowerShell 5.0 or later
- .NET Framework 3.5
- SQL Server 2017
- SQL Server Management Studio
- SQL Server Reporting Services
- Open ports 443, 1433, and 1434

PowerShell Version- \$Host.Version

```
Administrator: Windows PowerShell
Windows PowerShell
Copyright (C) Microsoft Corporation. All rights reserved.

PS C:\Users\ADMINISTRATOR.RAMLAN> $Host.Version

Major Minor Build Revision
-----
5      1      17763  771
```

.NET Version - (Get-ItemProperty "HKLM:\SOFTWARE\Microsoft\NET Framework Setup\NDP\v4\Full").Release -ge 394802

```
PS C:\Users\ADMINISTRATOR.RAMLAN> (Get-ItemProperty "HKLM:\SOFTWARE\Microsoft\NET Framework Setup\NDP\v4\Full").Release -ge 394802
True
PS C:\Users\ADMINISTRATOR.RAMLAN>
```

gci 'HKLM:\SOFTWARE\Microsoft\NET Framework Setup\NDP' -recurse | gp -name Version -EA 0 | where { \$_.PSChildName -match '^(?!S)\p{L}' } | select PSChildName, Version

```
Administrator: Windows PowerShell
PS C:\Users\ADMINISTRATOR.RAMLAN> gci 'HKLM:\SOFTWARE\Microsoft\NET Framework Setup\NDP' -recurse | gp -name Version -EA 0 | where { $_.PSChildName -match '^(?!S)\p{L}' } | select PSChildName, Version

PSChildName Version
-----
Client      4.7.03190
Full        4.7.03190
Client      4.0.0.0
```

SQL 2017:

DPM > DVD Drive (D:) SqlSetup_x64_ENU				
Name	Date modified	Type	Size	
1033_ENU_LP	23-Aug-2017 1:55 ...	File folder		
redist	23-Aug-2017 1:55 ...	File folder		
resources	23-Aug-2017 1:55 ...	File folder		
Tools	23-Aug-2017 1:55 ...	File folder		
x64	23-Aug-2017 5:52 ...	File folder		
autorun	04-Aug-2017 10:0...	Setup Information	1 KB	
MediaInfo	23-Aug-2017 1:57 ...	XML Document	1 KB	
setup	22-Aug-2017 8:38 ...	Application	107 KB	
setup.exe.config	18-Aug-2017 4:41 ...	CONFIG File	1 KB	
SqlSetupBootstrapper.dll	22-Aug-2017 8:20 ...	Application extens...	235 KB	

[Planning](#)**Installation**[Maintenance](#)[Tools](#)[Resources](#)[Advanced](#)[Options](#)

Microsoft SQL Server 2017

[New SQL Server stand-alone installation or add features to an existing installation](#)

Launch a wizard to install SQL Server 2017 in a non-clustered environment or to add features to an existing SQL Server 2017 instance.

[Install SQL Server Reporting Services](#)

Launch a download page that provides a link to install SQL Server Reporting Services. An internet connection is required to install SSRS.

[Install SQL Server Management Tools](#)

Launch a download page that provides a link to install SQL Server Management Studio, SQL Server command-line utilities (SQLCMD and BCP), SQL Server PowerShell provider, SQL Server Profiler and Database Tuning Advisor. An internet connection is required to install these tools.

[Install SQL Server Data Tools](#)

Launch a download page that provides a link to install SQL Server Data Tools (SSDT). SSDT provides Visual Studio integration including project system support for Azure SQL Database, the SQL Server Database Engine, Reporting Services, Analysis Services and Integration Services. An internet connection is required to install SSDT.

[New SQL Server failover cluster installation](#)

Launch a wizard to install a single-node SQL Server 2017 failover cluster.

[Add node to a SQL Server failover cluster](#)

Launch a wizard to add a node to an existing SQL Server 2017 failover cluster.

[Upgrade from a previous version of SQL Server](#)

Launch a wizard to upgrade a previous version of SQL Server to SQL Server 2017.

[New Machine Learning Server \(Standalone\) installation](#)

Launch a wizard to install Machine Learning Server (Standalone) on a Windows machine. This is typically used by data scientists as a standalone analysis server or as a

Product Key

Specify the edition of SQL Server 2017 to install.

Product Key[License Terms](#)[Global Rules](#)[Microsoft Update](#)[Product Updates](#)[Install Setup Files](#)[Install Rules](#)[Feature Selection](#)[Feature Rules](#)[Feature Configuration Rules](#)[Ready to Install](#)[Installation Progress](#)[Complete](#)

Validate this instance of SQL Server 2017 by entering the 25-character key from the Microsoft certificate of authenticity or product packaging. You can also specify a free edition of SQL Server: Developer, Evaluation, or Express. Evaluation has the largest set of SQL Server features, as documented in SQL Server Books Online, and is activated with a 180-day expiration. Developer edition does not have an expiration, has the same set of features found in Evaluation, but is licensed for non-production database application development only. To upgrade from one installed edition to another, run the Edition Upgrade Wizard.

☐ Specify a free edition:

Evaluation

☒ Enter the product key:

< Back

Next >

Cancel

License Terms

To install SQL Server 2017, you must accept the Microsoft Software License Terms.

Product Key

License Terms

Global Rules

Microsoft Update

Product Updates

Install Setup Files

Install Rules

Feature Selection

Feature Rules

Feature Configuration Rules

Ready to Install

Installation Progress



Complete

MICROSOFT SOFTWARE LICENSE TERMS

MICROSOFT SQL SERVER 2017 ENTERPRISE

These license terms are an agreement between Microsoft Corporation (or based on where you live, one of its affiliates) and you. Please read them. They apply to the software named above, which includes the media on which you received it, if any. The terms also apply to any Microsoft

- updates,
- supplements,
- Internet-based services, and

 
Copy Print

☒ I accept the license terms.

SQL Server 2017 transmits information about your installation experience, as well as other usage and performance data, to Microsoft to help improve the product. To learn more about SQL Server 2017 data processing and privacy controls, please see the [Privacy Statement](#).

< Back

Next >

Cancel

Microsoft Update

Use Microsoft Update to check for important updates

Product Key

License Terms

Global Rules

Microsoft Update

Product Updates

Install Setup Files

Install Rules

Feature Selection

Feature Rules

Feature Configuration Rules

Ready to Install

Installation Progress

Complete

Microsoft Update offers security and other important updates for Windows and other Microsoft software, including SQL Server 2017. Updates are delivered using Automatic Updates, or you can visit the Microsoft Update website.

☒ Use Microsoft Update to check for updates (recommended)

[Microsoft Update FAQ](#)

[Microsoft Update Privacy Statement](#)

< Back

Next >

Cancel

Install Rules

Setup rules identify potential problems that might occur while running Setup. Failures must be corrected before Setup can continue.

Product Key
License Terms
Global Rules
Microsoft Update
Product Updates
Install Setup Files
Install Rules
Feature Selection
Feature Rules
Feature Configuration Rules
Ready to Install
Installation Progress
Complete

Operation completed. Passed: 3. Failed 0. Warning 1. Skipped 0.

Hide details <<

Re-run

[View detailed report](#)

	Rule	Status
✓	Fusion Active Template Library (ATL)	Passed
✓	Consistency validation for SQL Server registry keys	Passed
✓	Computer domain controller	Passed
⚠	Windows Firewall	Warning

< Back

Next >

Cancel

Feature Selection

Select the Enterprise features to install.

Product Key
License Terms
Global Rules
Microsoft Update
Product Updates
Install Setup Files
Install Rules
Feature Selection
Feature Rules
Instance Configuration
Server Configuration
Database Engine Configuration
Feature Configuration Rules
Ready to Install
Installation Progress
Complete

Looking for Reporting Services? [Download it from the web](#)

Features:

Instance Features

- ☒ Database Engine Services
 - ☐ SQL Server Replication
 - ☐ Machine Learning Services (In-Database)
 - ☐ R
 - ☐ Python
 - ☐ Full-Text and Semantic Extractions for Search
 - ☐ Data Quality Services
 - ☐ PolyBase Query Service for External Data
 - ☐ Analysis Services

Shared Features

Feature description:

The configuration and operation of each instance feature of a SQL Server instance is isolated from other SQL Server instances. SQL

Prerequisites for selected features:

Already installed:

Windows PowerShell 3.0 or higher
Microsoft .NET Framework 4.6

Disk Space Requirements

Drive C: 1001 MB required, 238383 MB available

Select All

Unselect All

Instance root directory:

C:\Program Files\Microsoft SQL Server\

Shared feature directory:

C:\Program Files\Microsoft SQL Server\

Shared feature directory (x86):

C:\Program Files (x86)\Microsoft SQL Server\

< Back

Next >

Cancel

Instance Configuration

Specify the name and instance ID for the instance of SQL Server. Instance ID becomes part of the installation path.

Product Key
License Terms
Global Rules
Microsoft Update
Product Updates
Install Setup Files
Install Rules
Feature Selection
Feature Rules
Instance Configuration
Server Configuration
Database Engine Configuration
Feature Configuration Rules
Ready to Install
Installation Progress
Complete

☐ Default instance

☒ Named instance: DPM

Instance ID: DPM

SQL Server directory: C:\Program Files\Microsoft SQL Server\MSSQL14.DPM

Installed instances:

Instance Name	Instance ID	Features	Edition	Version

< Back

Next >

Cancel

Server Configuration

Specify the service accounts and collation configuration.

Product Key
License Terms
Global Rules
Microsoft Update
Product Updates
Install Setup Files
Install Rules
Feature Selection
Feature Rules
Instance Configuration
Server Configuration
Database Engine Configuration
Feature Configuration Rules
Ready to Install
Installation Progress
Complete

Service Accounts Collation

Microsoft recommends that you use a separate account for each SQL Server service.

Service	Account Name	Password	Startup Type
SQL Server Agent	RAMLAN\ADMINISTRAT...	●●●●●●●●	Automatic ▾
SQL Server Database Engine	RAMLAN\ADMINISTRAT...	●●●●●●●●	Automatic ▾
SQL Server Browser	NT AUTHORITY\LOCAL ...		Automatic ▾

☐ Grant Perform Volume Maintenance Task privilege to SQL Server Database Engine Service

This privilege enables instant file initialization by avoiding zeroing of data pages. This may lead to information disclosure by allowing deleted content to be accessed.

[Click here for details](#)

< Back

Next >

Cancel

Server Configuration

Specify the service accounts and collation configuration.

Product Key
License Terms
Global Rules
Microsoft Update
Product Updates
Install Setup Files
Install Rules
Feature Selection
Feature Rules
Instance Configuration
Server Configuration
Database Engine Configuration
Feature Configuration Rules
Ready to Install
Installation Progress
Complete

Service Accounts Collation

Database Engine:

SQL_Latin1_General_CP1_CI_AS

Customize...

Latin1-General, case-insensitive, accent-sensitive, kanatype-insensitive, width-insensitive for Unicode Data, SQL Server Sort Order 52 on Code Page 1252 for non-Unicode Data

< Back

Next >

Cancel

Database Engine Configuration

Specify Database Engine authentication security mode, administrators, data directories and TempDB settings.

Product Key
License Terms
Global Rules
Microsoft Update
Product Updates
Install Setup Files
Install Rules
Feature Selection
Feature Rules
Instance Configuration
Server Configuration
Database Engine Configuration
Feature Configuration Rules
Ready to Install
Installation Progress
Complete

Server Configuration Data Directories TempDB FILESTREAM

Specify the authentication mode and administrators for the Database Engine.

Authentication Mode

☒ Windows authentication mode

☐ Mixed Mode (SQL Server authentication and Windows authentication)

Specify the password for the SQL Server system administrator (sa) account.

Enter password:

Confirm password:

Specify SQL Server administrators

RAMLAN\ADMINISTRATOR (Administrator)
RAMLAN\ramlan (Ram Lan)
RAMLAN\ram (Ram)
DPM\Administrator (Administrator)

SQL Server administrators have unrestricted access to the Database Engine.

Add Current User

Add...

Remove

< Back

Next >

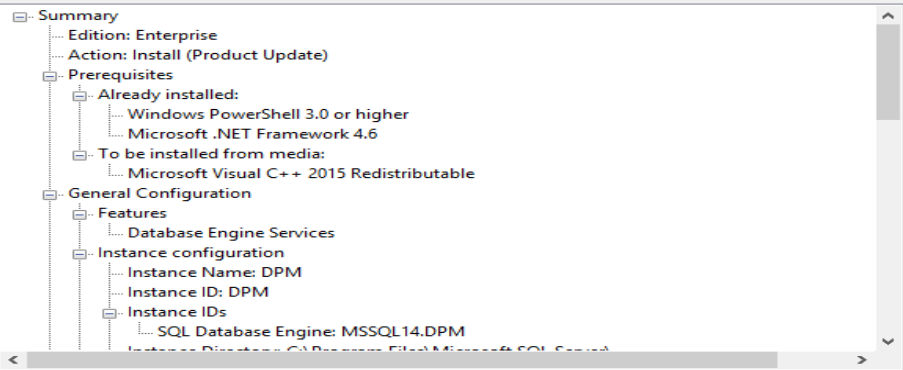
Cancel

Ready to Install

Verify the SQL Server 2017 features to be installed.

Product Key
License Terms
Global Rules
Microsoft Update
Product Updates
Install Setup Files
Install Rules
Feature Selection
Feature Rules
Instance Configuration
Server Configuration
Database Engine Configuration
Feature Configuration Rules
Ready to Install
Installation Progress
Complete

Ready to install SQL Server 2017:



Configuration file path:

C:\Program Files\Microsoft SQL Server\140\Setup Bootstrap\Log\20191225_132932\ConfigurationFile.ini

< Back

Install

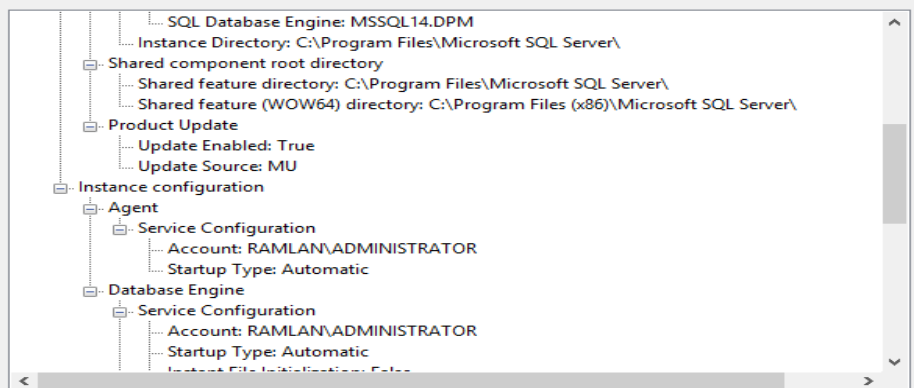
Cancel

Ready to Install

Verify the SQL Server 2017 features to be installed.

Product Key
License Terms
Global Rules
Microsoft Update
Product Updates
Install Setup Files
Install Rules
Feature Selection
Feature Rules
Instance Configuration
Server Configuration
Database Engine Configuration
Feature Configuration Rules
Ready to Install
Installation Progress
Complete

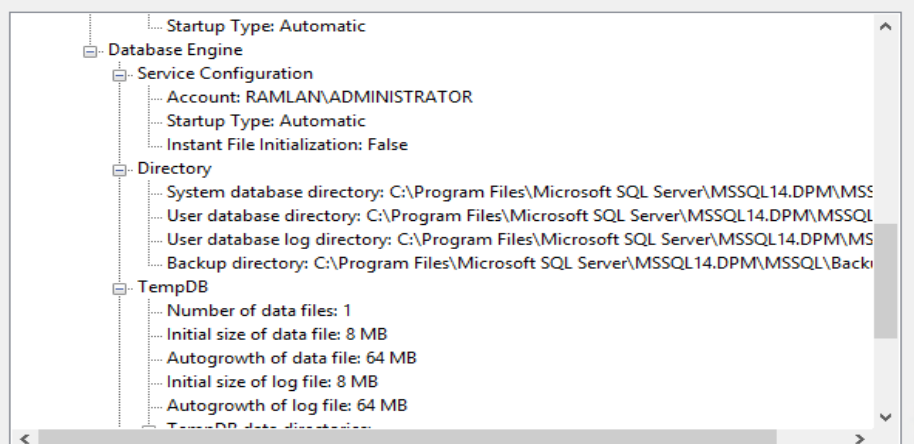
Ready to install SQL Server 2017:

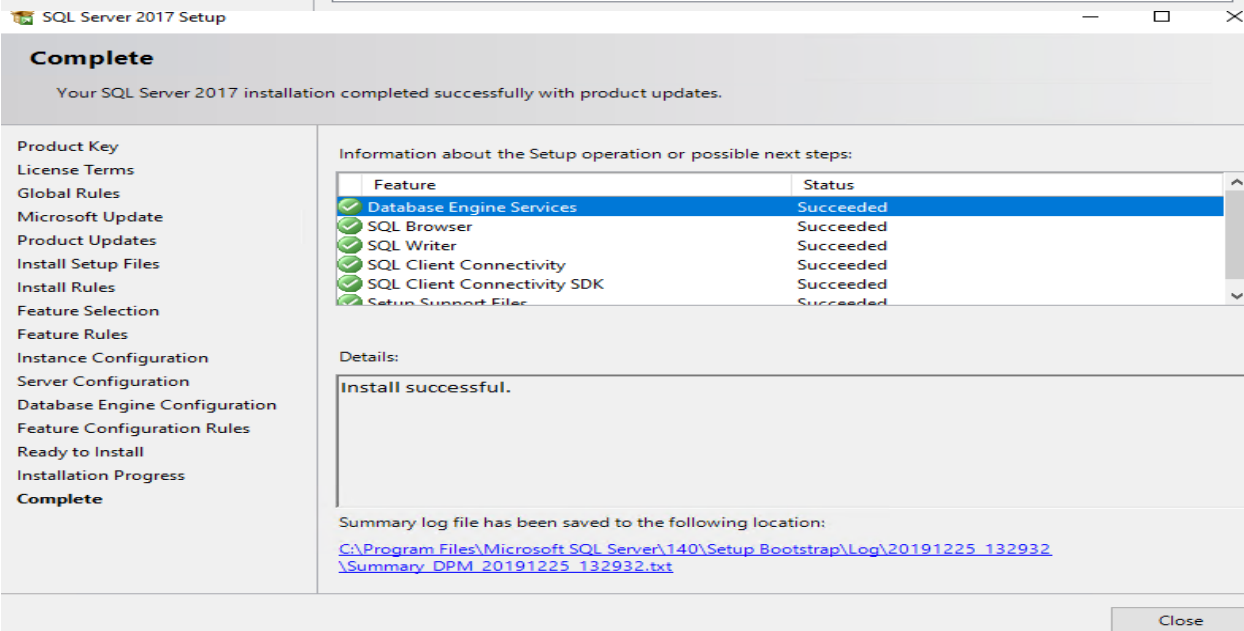
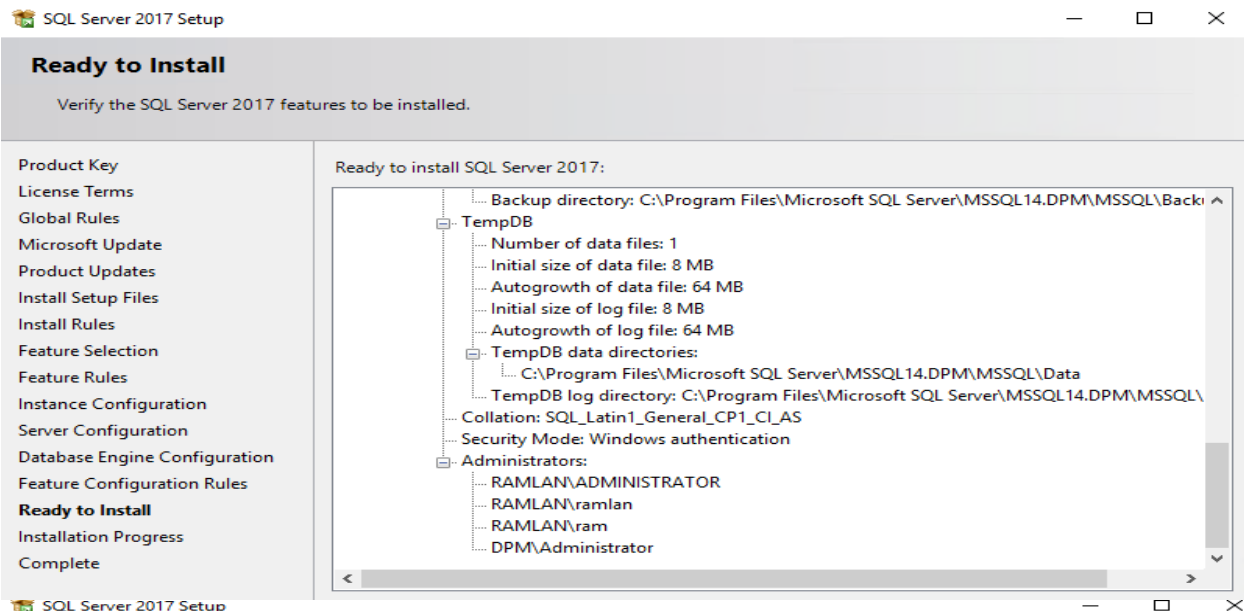
**Ready to Install**

Verify the SQL Server 2017 features to be installed.

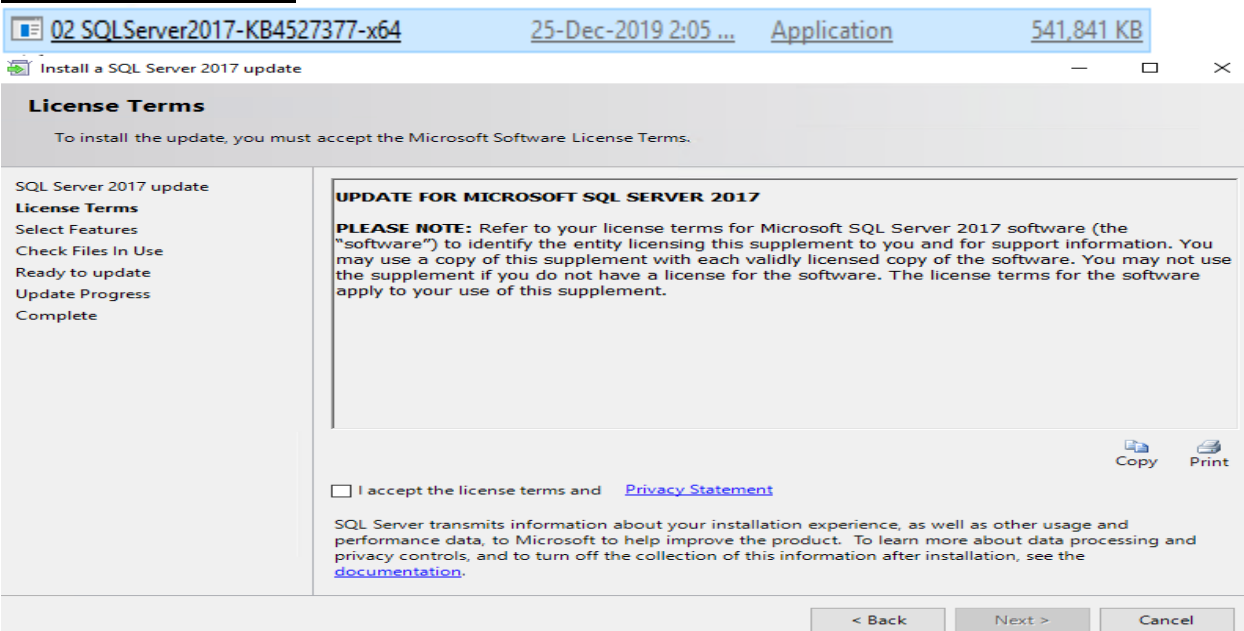
Product Key
License Terms
Global Rules
Microsoft Update
Product Updates
Install Setup Files
Install Rules
Feature Selection
Feature Rules
Instance Configuration
Server Configuration
Database Engine Configuration
Feature Configuration Rules
Ready to Install
Installation Progress
Complete

Ready to install SQL Server 2017:





SQL Update KB4527377:



Select Features

Specify the features to update.

SQL Server 2017 update

License Terms

Select Features

Check Files In Use

Ready to update

Update Progress

Complete

Instances:

☒ DPM
 ... Database Engine Services
☒ Shared Features
 ... SQL Client Connectivity SDK

Select All

Unselect All

Description:

Language:

Edition:

Patch Level:

Architecture:

Service Pack:

Upgrade Status:

< Back

Next >

Cancel

Check Files In Use

The following services and applications are using files that Setup needs to complete the installation. To avoid a computer restart, stop the applications and services.

SQL Server 2017 update

License Terms

Select Features

Check Files In Use

Ready to update

Update Progress

Complete

Files in use check completed.

Stop check

Refresh check



< Back

Next >

Cancel

Ready to update

Verify the list of features to be updated.

SQL Server 2017 update

License Terms

Select Features

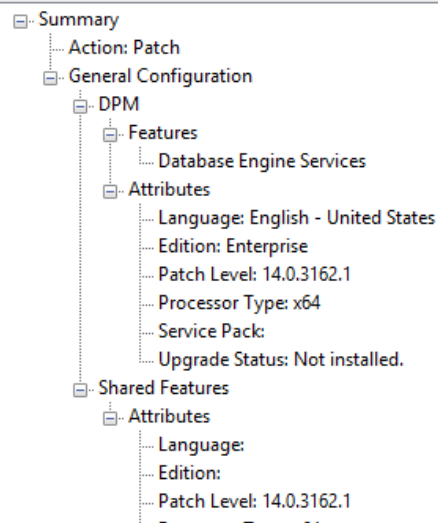
Check Files In Use

Ready to update

Update Progress

Complete

Ready to update:



Configuration file path:

< Back

Update

Cancel

Complete

Your SQL Server 2017 update operation is complete.

SQL Server 2017 update

License Terms

Select Features

Check Files In Use

Ready to update

Update Progress

Complete

Information about the Setup operation or possible next steps:

Feature	Status
✓ Database Engine Services (DPM)	Succeeded
✓ SQL Browser (DPM)	Succeeded
✓ SQL Writer (DPM)	Succeeded
✓ Setup Support Files (DPM)	Succeeded

Summary log file has been saved to the following location:

C:\Program Files\Microsoft SQL Server\140\Setup Bootstrap\Log\20191225_143404\Summary_DPM_20191225_143404.txt

Close

Install SQL Server Management Studio:



RELEASE 18.4

Microsoft SQL Server Management Studio

Welcome. Click "Install" to begin.

Location:

C:\Program Files (x86)\Microsoft SQL Server Management Studio 18

Change

By clicking the "Install" button, I acknowledge that I accept the [License Terms](#) and [Privacy Statement](#).

SQL Server Management Studio transmits information about your installation experience, as well as other usage and performance data, to Microsoft to help improve the product. To learn more about data processing and privacy controls, and to turn off the collection of this information after installation, see the [documentation](#).

Install

Close



RELEASE 18.4

Microsoft SQL Server Management Studio

Restart required in order to complete setup.

All specified components have been installed successfully.

The computer needs to be restarted before setup can continue.

Restart

Close

Microsoft SQL Server 2017 Reporting Services

(October 2017)

Welcome

Install Reporting Services

SQL Server Reporting Services transmits information about your installation experience, as well as other usage and performance data, to Microsoft to help improve the product. To learn more about SQL Server Reporting Services data processing and privacy controls, please see [Privacy Statement](#).

Microsoft SQL Server 2017 Reporting Services

(October 2017)

Choose an edition to install

☐ Choose a free edition:

Evaluation (expires in 180 days)

☒ Enter the product key:

Cancel

< Previous

Next >

Microsoft SQL Server 2017 Reporting Services

(October 2017)

Review the license terms

MICROSOFT SOFTWARE LICENSE TERMS

MICROSOFT SQL SERVER 2017 ENTERPRISE

These license terms are an agreement between Microsoft Corporation (or based on where you live, one of its affiliates) and you. Please read them. They apply to the software named above, which includes the media on which you received it, if any. The terms also apply to any Microsoft

- updates,
- supplements,
- Internet-based services, and
- support services

for this software, unless other terms accompany those items. If so, those terms apply.

☒ I accept the license terms

Cancel

< Previous

Next >

Microsoft SQL Server 2017 Reporting Services

(October 2017)

Install Database Engine

You'll need an instance of SQL Server Database Engine to store the report server database.

☒ Install Reporting Services only

You'll need to have or install a Database Engine instance on this server or on a different server.

[Learn more about supported Database Engine versions and editions](#)

Cancel

< Previous

Next >


Microsoft SQL Server 2017 Reporting Services

(October 2017)

Specify an install location

Install location

C:\Program Files\Microsoft SQL Server Reporting Services

 Browse

Cancel

< Previous

Install

Microsoft SQL Server 2017 Reporting Services

(October 2017)

Setup completed

Setup has installed the files you need. You're ready to configure your report server.

☒ Configure manually and customize settings

We'll start Report Server Configuration Manager for you to configure your report server.

[Learn more](#)

Configure report server

Close

Connect to Report Server to complete the configuration:
The Report Server Configuration Connection

Report Server Connection

Please specify a server name, click the Find button, and select a report server instance to configure.

Server Name:

Report Server Instance:

Connect

DPM\SSRS

Service Account

Web Service URL

Database

Web Portal URL

E-mail Settings

Execution Account

Encryption Keys

Subscription Settings

Scale-out Deployment

Power BI Service (cloud)

Service Account

Specify a built-in account or Windows domain user account to run the report server service.

Report Server Service Account

Choose an option to set the service account and then click Apply.

☒ Use built-in account:

☐ Use another account:

Account (Domain\user):

Password:

Results

Starting report server "SSRS" on DPM.

Stopping report server "SQLServerReportingServices" on DPM.

Starting report server "SQLServerReportingServices" on DPM.

The task completed successfully.

Connect

DPM\SSRS

Service Account

Web Service URL

Database

Web Portal URL

E-mail Settings

Execution Account

Encryption Keys

Subscription Settings

Scale-out Deployment

Power BI Service (cloud)

Web Service URL

Configure a URL used to access the Report Server. Click Advanced to define multiple URLs for a single Report Server instance, or to specify additional parameters on the URL.

Report Server Web Service Virtual Directory

Virtual Directory:

Report Server Web Service Site identification

IP Address:

TCP Port:

HTTPS Certificate:

HTTPS Port:

Report Server Web Service URLs

URLs: http://DPM:80/ReportServer_DPM

Results

Reserving url http://+:80

Stopping report server "SQLServerReportingServices" on DPM.

Starting report server "SQLServerReportingServices" on DPM.

The task completed successfully.

Connect

DPM/SSRS
Service Account
Web Service URL
Database
Web Portal URL
E-mail Settings
Execution Account
Encryption Keys
Subscription Settings
Scale-out Deployment
Power BI Service (cloud)

Report Server Database

The report server stores all report server content and application data in a database. Use this page to create or change the report server database or update database connection credentials.

Current Report Server Database

Click Change database to select a different database or create a new database.

SQL Server Name:
Database Name:
Report Server Mode:

Change Database

Current Report Server Database Credential

The following credentials are used by the report server to connect to the report server database. Use the options below to choose a different account or update a password.

Credential:
Login:
Password:

Change Credentials

Results

Select one of the following options to create an empty report server database or select an existing report server database that has content you want to use.

Select a task from the following list:

- ☒ Create a new report server database.
- ☐ Choose an existing report server database.

Action

Database Server

Database

Credentials

Summary

Progress and Finish

Choose a local or remote instance of a SQL Server and enter the database connection credentials that have permission to connect to that instance.

Connect to the Database Server:

Server Name: DPM\DPM
Authentication Type: Current User - Integrated Security
Username: RAMLAN\Administrator
Password:

Test Connection

Test Connection Succeeded.

OK

Action

Database Server

Database

Credentials

Summary

Progress and Finish

Enter a database name and select the language to use for running SQL scripts.

Database Name: ReportServer
Temp Database Name: ReportServerTemp
Language: English (United States)
Report Server Mode: Native

Action	Specify the credentials of an existing account that the report server will use to connect to the report server database. Permission to access the report server database will be automatically granted to the account you specify.
Database Server	
Database	
Credentials	
Summary	
Progress and Finish	

Credentials:

Authentication Type:

Service Credentials

User name:

NT Authority\NetworkService

Password:

Action	The following information will be used to create a new report server database. Verify this information is correct before you continue.
Database Server	
Database	
Credentials	
Summary	
Progress and Finish	

SQL Server Instance:

DPM\DPM

Report Server Database:

ReportServer

Temp Database:

ReportServerTempDB

Report Server Language:

English (United States)

Report Server Mode:

Native

Authentication Type:

Service Account

Username:

NT Authority\NetworkService

Password:

Action	Please wait while the Report Server Database Configuration wizard configures the database. This might take several minutes to complete.
Database Server	
Database	
Credentials	
Summary	
Progress and Finish	

Verifying database sku	Success
Generating database script	Success
Running database script	Success
Generating rights scripts	Success
Applying connection rights	Success
Setting DSN	Success

Connect

DPM\SSRS

Service Account

Web Service URL

Database

Web Portal URL

E-mail Settings

Execution Account

Encryption Keys

Subscription Settings

Scale-out Deployment

Power BI Service (cloud)

Web Portal URL

Configure a URL to access Web Portal. Click Advanced to define multiple URLs, or to specify additional parameters on the URL.

Web Portal Site Identification

Virtual Directory: Reports_DPM

URLs: http://DPM:80/Reports_DPM

Advanced

Results

Creating virtual directory Reports_DPM

Reserving url http://+:80

Stopping report server "SQLServerReportingServices" on DPM.

Starting report server "SQLServerReportingServices" on DPM.

The task completed successfully.

Copy

Connect

DPM\SSRS

Service Account

Web Service URL

Database

Web Portal URL

E-mail Settings

Execution Account

Encryption Keys

Subscription Settings

Scale-out Deployment

Power BI Service (cloud)

Encryption Keys

The report server uses a symmetric key to encrypt credentials, connection strings, and other sensitive data that is stored in the report server database. You can manage this key by creating a backup. If you migrate or move the report server installation to another computer, you can restore the key to regain access to encrypted content.

Backup

Backup the key to a password protected file for report server recovery in case of emergency.

Backup

Restore

To restore the encryption key, click the Restore button. You must know the password that was used to protect the encryption key file.

Restore

Change

This operation replaces the encryption key with a newer version.

Change

Delete Encrypted Content

All stored connection strings, credentials, and encrypted values in a subscription will be deleted. After you delete this content, you must redefine all data source connections and subscriptions used on the report server.

Delete

Results

Delete All Encrypted Content

Delete the key along with all encrypted data stored in the report server, including connection strings, stored credentials, KPIs, and subscription information.

This operation is performed as a last resort if you do not have a backup or you cannot restore the key. After you delete this content, you must redefine all report data source settings and subscriptions used on the report server.

Are you sure you want to delete all encrypted data?



Yes

No



Microsoft SQL Server Management Studio

File Edit View Project Tools Win

Object Explorer

Connect

DPM\DPM (SQL Server 14.0.3162.1 - RA

Databases

System Databases

Database Snapshots

ReportServer

ReportServerTempDB

Security

Server Objects

Replication

PolyBase

Always On High Availability

Management

Integration Services Catalogs

SQL Server Agent

XEvent Profiler

Installation of Data Protection Manager:



System Center 2019 Data Protection Manager

Install

[Data Protection Manager](#)

[DPM Central Console](#)

[DPM Protection Agent](#)

[DPM Remote Administration](#)

[DPM Self Service Recovery](#)

[DPM Remote SQL Prep](#)

Before you begin

[View Release Notes](#)

[Prerequisites](#)

[Visit DPM Web Site](#)

© Microsoft Corporation. All rights reserved.

[Exit](#)

Microsoft Software License Terms

To install Data Protection Manager, you must accept the Microsoft Software License Terms. These license terms apply for DPM, and each of its prerequisite software products.

PLEASE NOTE: Your use of this software is subject to the terms and conditions of the license agreement by which you (or your company) acquired the Microsoft server software or gained access to the online service from Microsoft. For instance, if you are:

- a volume license customer or service provider, use of this software is subject to your volume license agreement or service provider license agreement;
- a customer that received the software separately from a hardware manufacturer or system builder, use of this software is subject to the license agreement with that party;
- an online service customer, use of this software is subject to the online subscription agreement.

To print a copy of the license terms, select the text, copy it into a document, and then print it. To view the license terms after the installation is complete, open DPM Administrator Console and click About DPM.

[Privacy Statement Link](#)

Accept

Decline

Help

**Welcome**

Welcome to the Microsoft System Center Data Protection Manager Setup wizard.

Installation Stages

- Welcome
- Prerequisites check
- Product registration
- Installation settings
- Microsoft Update Opt-In
- Summary of settings
- Installation



This wizard helps you install Data Protection Manager (DPM) and its prerequisite software on this computer. To continue, click Next.

< Back

Next >

Cancel

Help

**Prerequisites Check**

Please wait while the wizard checks for required hardware and software.

Installation Stages

- Welcome
- Prerequisites check
- Product registration
- Installation settings
- Microsoft Update Opt-In
- Summary of settings
- Installation

DPM requires a database. You can use a local or remote instance of SQL Server that already exists.

☒ Use stand-alone SQL Server.

SQL Server is not clustered.

☐ Use clustered SQL Server

SQL Server is clustered

Instance of SQL Server

(Example: SQLSERV or SQLSERV\MYSQLINSTANCE):

DPM\DPM

User Name:

Password:

Domain:

Select the appropriate option and click on the button to perform the prerequisite check and install the missing Windows components.

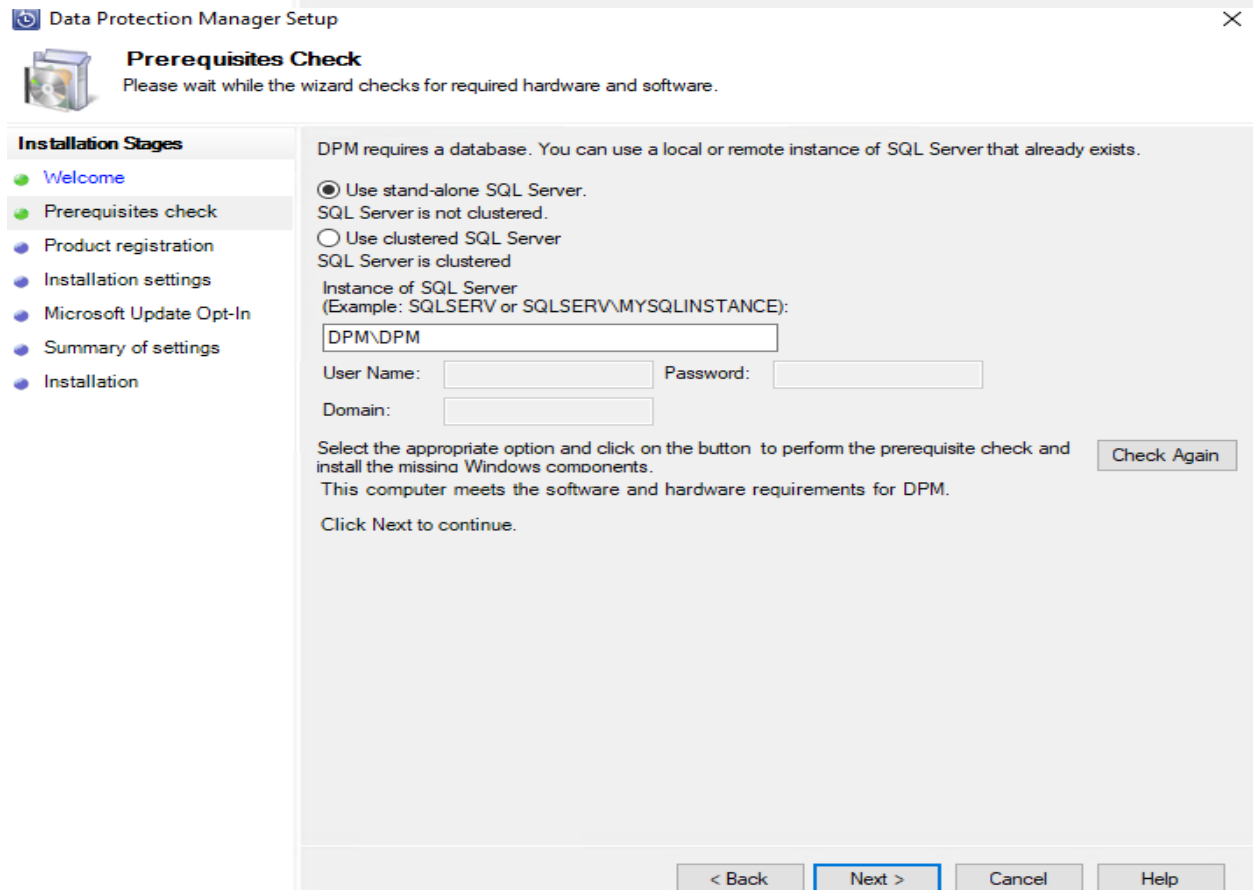
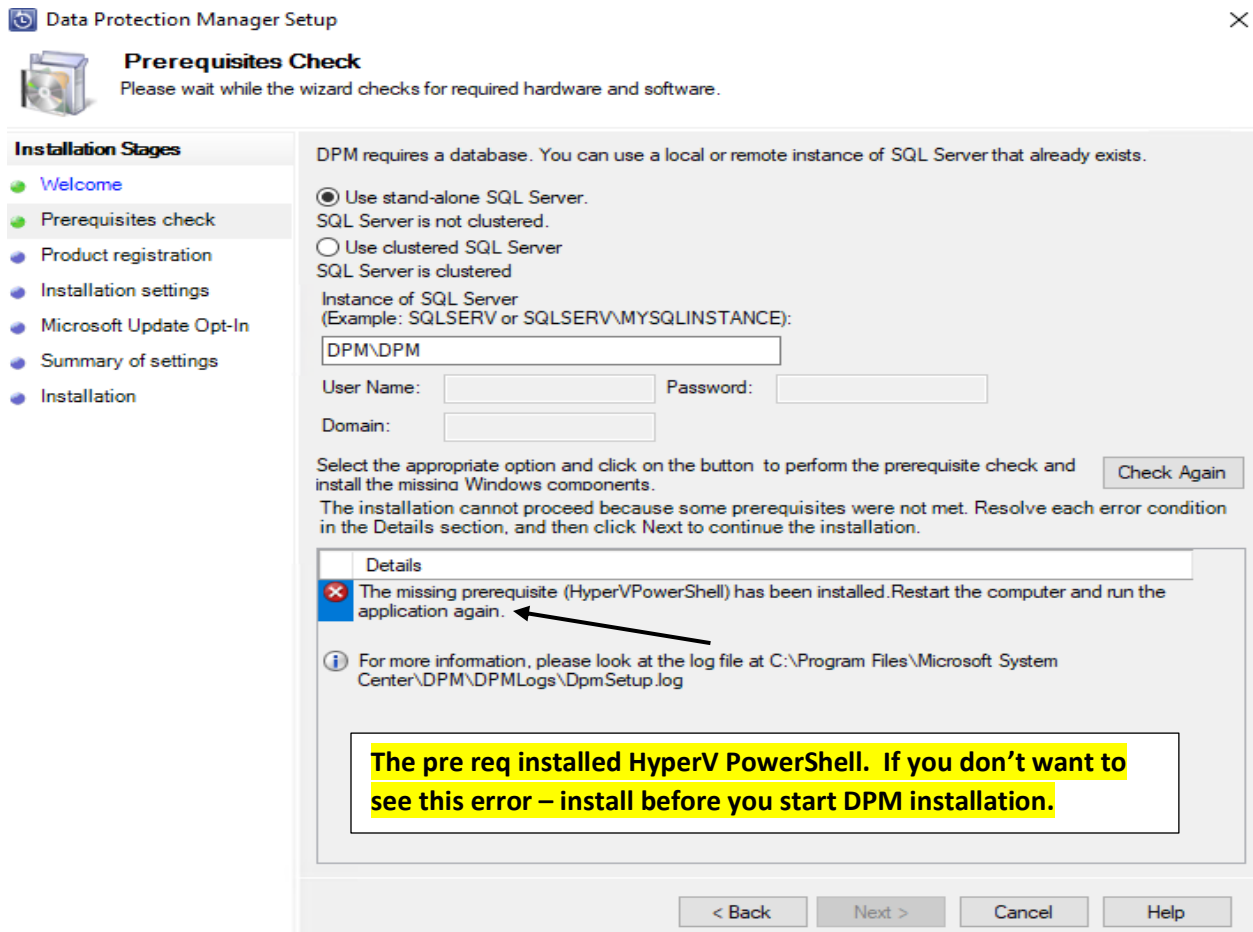
Check and Install

< Back

Next >

Cancel

Help



**Product Registration**

Enter product registration information.

Installation Stages

- Welcome
- Prerequisites check
- Product registration
- Installation settings
- Microsoft Update Opt-In
- Summary of settings
- Installation

User name:

Administrator

Company:

RAMLAN INC

Product key:

Enter the product key from the back cover of the Data Protection Manager product DVD.

< Back

Next >

Cancel

Help

**Product Registration**

Enter product registration information.

Installation Stages

- Welcome
- Prerequisites check
- Product registration
- Installation settings
- Microsoft Update Opt-In
- Summary of settings
- Installation

DPM Files

Program files:

C:\Program Files\Microsoft System Center\DPM

Change...

Space requirements

	Required	Available
System drive:	1000 MB	229666 MB
Program files drive:	3650 MB	229666 MB

For more details on storage requirement click on the link below.

<http://go.microsoft.com/fwlink/?linkid=820915>

< Back

Next >

Cancel

Help

**Microsoft Update Opt-In****Installation Stages**

- Welcome
- Prerequisites check
- Product registration
- Installation settings
- Microsoft Update Opt-In**
- Summary of settings
- Installation



Microsoft Update offers security and important updates for Windows and other Microsoft products, including Data Protection Manager. Updates are delivered using your Automatic Updates setting, or you can visit the Microsoft Update Web site.

If you select to use Microsoft Update, a new shortcut to the service will be placed on the Start menu, and the Windows Update icon will redirect to Microsoft Update.



☒ Use Microsoft Update when I check for updates (recommended)



☐ I do not want to use Microsoft Update

[See the Microsoft Update FAQ](#)

[Privacy Statement](#)

< Back

Next >

Cancel

Help

**Microsoft Update Opt-In****Installation Stages**

- Welcome
- Prerequisites check
- Product registration
- Installation settings
- Microsoft Update Opt-In
- Summary of settings
- Installation**

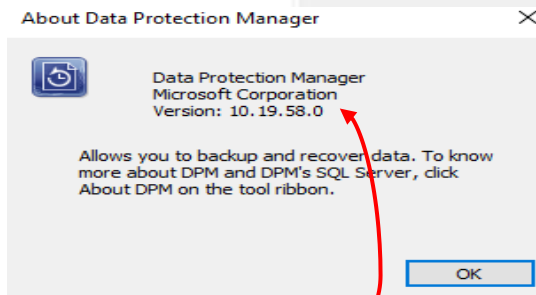
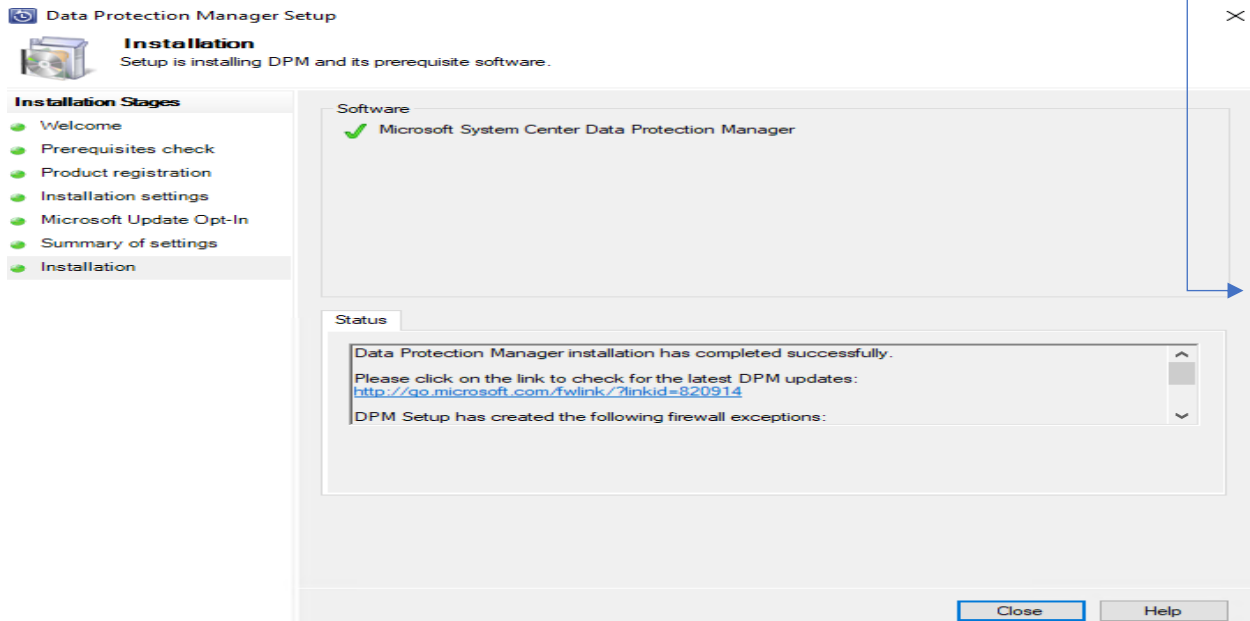
User name:	Administrator
Company:	RAMLAN INC
SQL Server instance:	DPM\DPM
Reporting instance:	DPM\SSRS
Program files location:	C:\Program Files\Microsoft System Center\DPM

< Back

Install

Cancel

Help



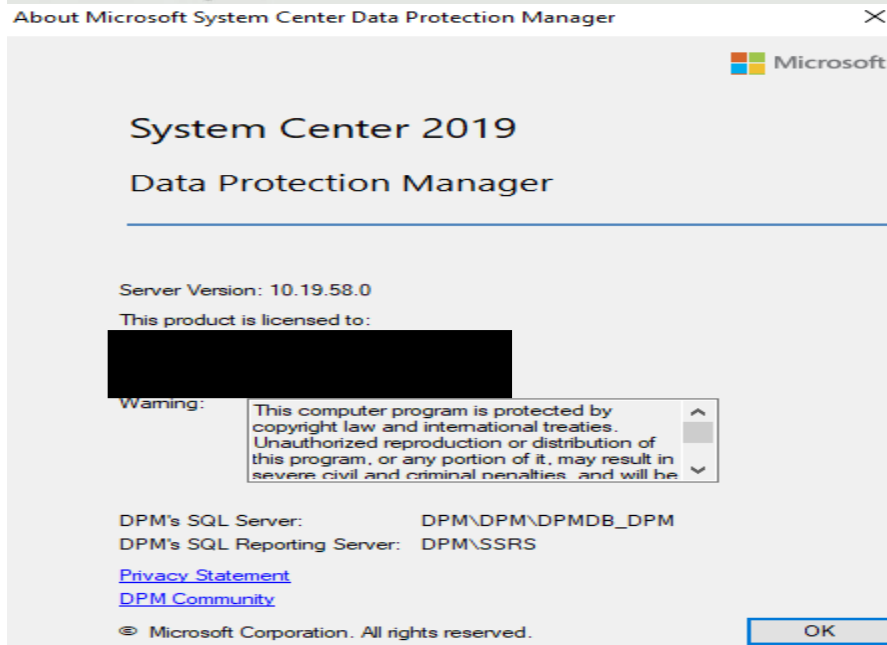
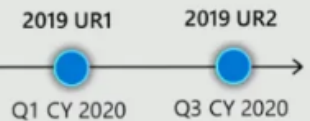
System Center Data Protection Manager 2019 build numbers

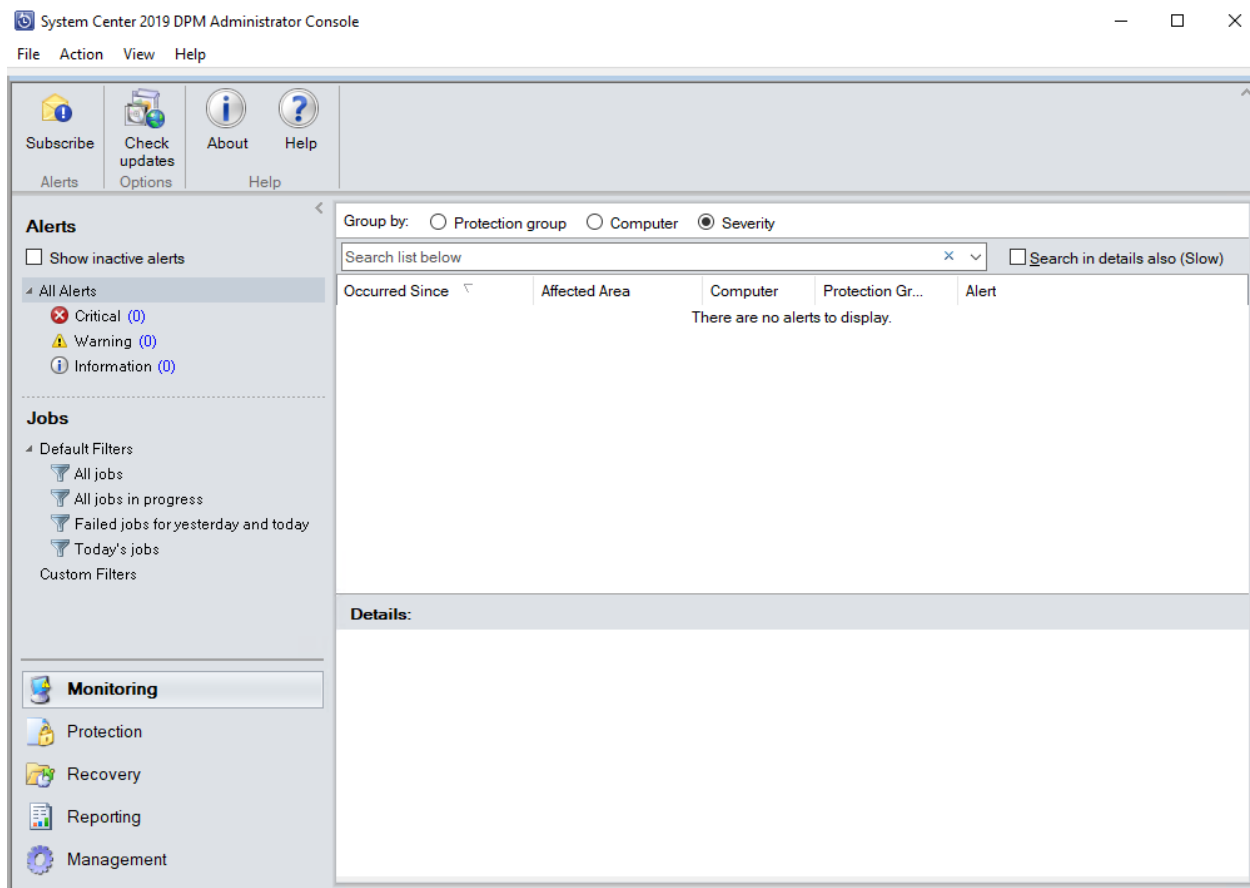
BUILD NUMBER	KB	RELEASE DATE	DESCRIPTION
10.19.58.0	What's New	2019 March 14	SCDPM 2019 RTM

System Center releases

2019 Update Rollups (UR) for 2019 LTSC

- Every 6 months
- New features + Bug fixes





This concludes DPM 2019 install. Now, I will install any updates pertaining to DPM 2019 directly from Microsoft site.

Thanks

Ram Lan
25th Dec 2019