

LAPS Extension for CB1906

After implementing LAPS at home, I came across this extension (**FREE**) from the community. Implemented right way to check out.

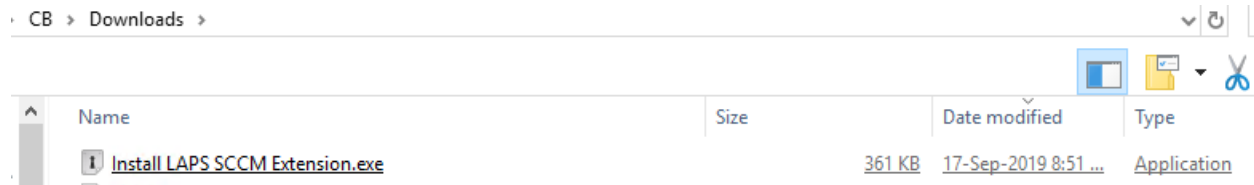
You can download the extension from here ...

<https://gallery.technet.microsoft.com/LAPS-Extension-for-SCCM-e8bd35b1>

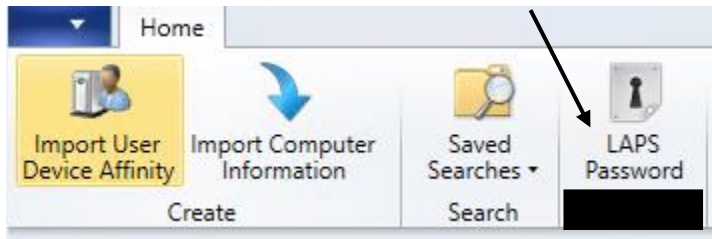
The install is pretty simple.

Copy the extension to Primary site server – Close Config Mgr Console – Run the installer – Next Next and you are done.

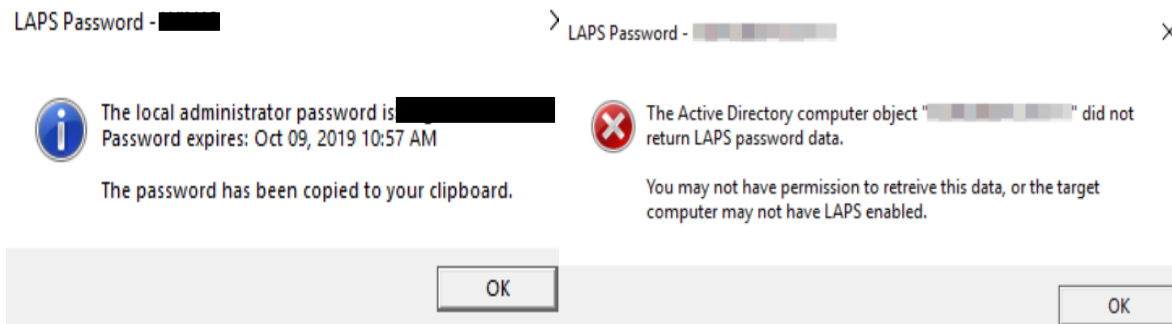
If you deploy console to workstations used by support staff the extension has to be installed on each workstation. If you don't want install manually then you can create a package and deploy to a collection. I will provide details below.



Open the console and you will see the extension listed on the top ribbon.



If your support staff want to know LAR Pass – Just select the device and click LAPS password. Please note you should have the permission to view – if not you will get an error.



Create a package for LAPS Extension for deployment to Win 10 collection for testing.

Create Package

Create Package and Program Wizard

Package

Package

Program Type

Standard Program

Requirements

Summary

Progress

Completion

Specify information about this package

Enter a name and other details for the new package. To take full advantage of new features that include the Software Center, use an application instead.

Name: LAPS Extension

Description:

Manufacturer: Community

Language: EN Version: 1.0

This package contains source files

Source folder: \\cb\Sources\Windows Application\LAPS Extension [Browse...](#)

If the selected architecture and language matches that of the client, the package content will be downloaded in advance.

Architecture: x86 x64

Language:

< Previous Next > Summary Cancel



Program Type

- Package
- Program Type**
- Standard Program
- Requirements
- Summary
- Progress
- Completion

Choose the program type that you want to create

- Standard program
Create a program for a client computer.
- Program for device
Create a program for a device.
- Do not create a program
Create a package, but do not create a program. You can use the Create Program Wizard to add a program later.

< Previous **Next >** Summary Cancel



Standard Program

- Package
- Program Type
- Standard Program**
- Requirements
- Summary
- Progress
- Completion

Specify information about this standard program

Name:

Command line:

Startup folder:

Run: ▾

Program can run: ▾

Run mode: ▾

Allow users to view and interact with the program installation

Drive mode: ▾

Reconnect to distribution point at log on

< Previous **Next >** Summary Cancel



Requirements

Package
 Program Type
 Standard Program
Requirements
 Summary
 Progress
 Completion

Specify the requirements for this standard program

Run another program first

Package:
 Program:

Browse...

Always run this program first

Platform requirements

- This program can run on any platform
- This program can run only on specified platforms

- All Windows RT
- All Windows RT 8.1
- All Windows 10 (32-bit)
- All Windows 10 (64-bit)
- All Windows 7 (64-bit)
- All Windows 8 (64-bit)
- All Windows 8.1 (64-bit)
- Windows Embedded 8 Industry (64-bit)
- Windows Embedded 8 Standard (64-bit)
- Windows Embedded 8.1 Industry (64-bit)

Estimated disk space: MB

Maximum allowed run time (minutes):

< Previous **Next >** Summary Cancel



Summary

Package
 Program Type
 Standard Program
 Requirements
Summary
 Progress
 Completion

Confirm the settings

Details:

General:

- Name: LAPS Extension
- Description:
- Version: 1.0
- Publisher: Community
- Language: EN
- Source files: \\cb\Sources\Windows Application\LAPS Extension
- Always obtain files from the source folder

Program Type: Standard Program

Program:

- Name: LAPS Extn
- Command line: Install LAPS SCCM Extension.exe /s
- Start in:
- Run: Normal
- Run mode: Run with administrative rights
- Program can run: Whether or not a user is logged on
- Drive mode: Runs with UNC name

Requirements:

- Platforms supported: Any
- Estimated disk space: 20 MB
- Maximum allowed runtime(minutes): 120

To change these settings, click Previous. To apply the settings, click Next.

< Previous **Next >** Summary Cancel



Completion

- Package
- Program Type
 - Standard Program
 - Requirements
- Summary
- Progress
- Completion

The Create Package and Program Wizard completed successfully

Details:

- Success: General:**
 - Name: LAPS Extension
 - Description:
 - Version: 1.0
 - Publisher: Community
 - Language: EN
 - Source files: \\cb\Sources\Windows Application\LAPS Extension
 - Always obtain files from the source folder

- Success: Program Type: Standard Program**

- Success: Program:**
 - Name: LAPS Extn
 - Command line: Install LAPS SCCM Extension.exe /s
 - Start in:
 - Run: Normal
 - Run mode: Run with administrative rights
 - Program can run: Whether or not a user is logged on
 - Drive mode: Runs with UNC name

- Success: Requirements:**
 - Platforms supported: Any
 - Estimated disk space: 20 MB

To exit the wizard, click Close.

< Previous
Next >
Summary
Close

Home
Folder

Create Package

Create Package from Definition

Import

Saved Searches

Manage Access Accounts

Create Prestaged Content File

Create Program

Export

Refresh

Delete

Analyze Package

Convert Package

Fix and Convert

Deploy D

Software Library > Overview > Application Management > Packages

Software Library


- Overview
- Application Management
 - Applications
 - Apple
 - Windows

Packages 9 items

Search

Icon	Name	Programs	Manufacturer
	Configuration Manager Client Package	0	Microsoft Corporati
	Configuration Manager Client Piloting Package	0	Microsoft Corporati
	LAPS Extension	1	Community

Deploy Software Wizard ×

 **General**

General

Content

- Deployment Settings
 - Scheduling
 - User Experience
 - Distribution Points
- Summary
- Progress
- Completion

Specify general information for this deployment

Software:


Collection:

Use default distribution point groups associated to this collection

Automatically distribute content for dependencies

Comments (optional):

Deploy Software Wizard ×

 **Content**

General

Content

- Deployment Settings
 - Scheduling
 - User Experience
 - Distribution Points
- Summary
- Progress
- Completion

Specify the content destination

Distribution points or distribution point groups that the content has been distributed to:

Name	Type	
There are no items to show in this view.		

Additional distribution points, distribution point groups, and the distribution point groups that are currently associated with collections to distribute content to:

Filter...

Name	Description	Associations
CB.RAMLAN.CA	Distribution point	
Toronto	Distribution point group	0



Deployment Settings

- General
- Content
- Deployment Settings**
- Scheduling
- User Experience
- Distribution Points
- Summary
- Progress
- Completion

Specify settings to control how this software is deployed

Action:

Purpose:

< Previous **Next >** Summary Cancel



Scheduling

- General
- Content
- Deployment Settings
- Scheduling**
- User Experience
- Distribution Points
- Summary
- Progress
- Completion

Specify the schedule for this deployment

This program will be available as soon as it has been distributed to the content servers unless it is scheduled for a later time below. For required applications, specify the assignment schedule.

Schedule when this deployment will become available:
 UTC

Schedule when this deployment will expire:
 UTC

Assignment schedule:

There are no items to show in this view.

Rerun behavior:

< Previous **Next >** Summary Cancel



User Experience

- General
- Content
- Deployment Settings
- Scheduling
- User Experience**
- Distribution Points
- Summary
- Progress
- Completion

Specify the user experience for the installation of this software on the selected devices

Notification settings:

- Allow users to run the program independently of assignments

When the scheduled assignment time is reached, allow the following activities to be performed outside the maintenance window:

- Software installation
- System restart (if required to complete the installation)

Write filter handling for Windows Embedded devices

- Commit changes at deadline or during a maintenance window (requires restarts)

If this option is not selected, content will be applied on the overlay and committed later.



Distribution Points

- General
- Content
- Deployment Settings
- Scheduling
- User Experience
- Distribution Points**
- Summary
- Progress
- Completion

Specify how to run the content for this program according to the type of boundary the client is connected to

Select the deployment option to use when a client uses a distribution point from a current boundary group.

Deployment options:

Download content from distribution point and run locally ▼

Select the deployment option to use when a client uses a distribution point from a neighbor boundary group or the default site boundary group.

Deployment options:

Do not run program ▼

When this content is not available on any distribution points in current and neighbor boundary groups, you can allow the client to use a distribution point in site default boundary group.

- Allow clients to use distribution points from the default site boundary group

Deploy Software Wizard

Summary

General
Content
Deployment Settings
Scheduling
User Experience
Distribution Points
Summary
Progress
Completion

Confirm the settings for this new deployment

Details:

- General**
 - Software: LAPS Extension (LAPS Extn)
 - Collection: Win 10 (Member Count: 2)
 - Use default distribution point groups associated to this collection: Disabled
 - Automatically distribute content for dependencies: Disabled
- Deployment Settings**
 - Action: Install
 - Purpose: Available
 - Allow clients to use a metered Internet connection to download content: Disabled
- Scheduling**
 - Schedule when this deployment will become available: Disabled
 - Schedule when this deployment will expire: Disabled
 - Rerun behavior: Always rerun program
- User Experience**
 - Allow users to run the program independently of assignments: Enabled
 - Software installation: Disabled
 - System restart (if required to complete the installation): Disabled
 - Allow task sequence to run for client on the Internet: Disabled
 - Commit changes at deadline or during a maintenance window (requires restarts): Enabled
- Distribution Points**
 - Select the deployment option to use when a client uses a distribution point from a current boundary group.: Download content from distribution point and run locally

To change these settings, click Previous. To apply the settings, click Next.

< Previous **Next >** Summary Cancel

Deploy Software Wizard

Completion

General
Content
Deployment Settings
Scheduling
User Experience
Distribution Points
Summary
Progress
Completion

The Deploy Software Wizard completed successfully

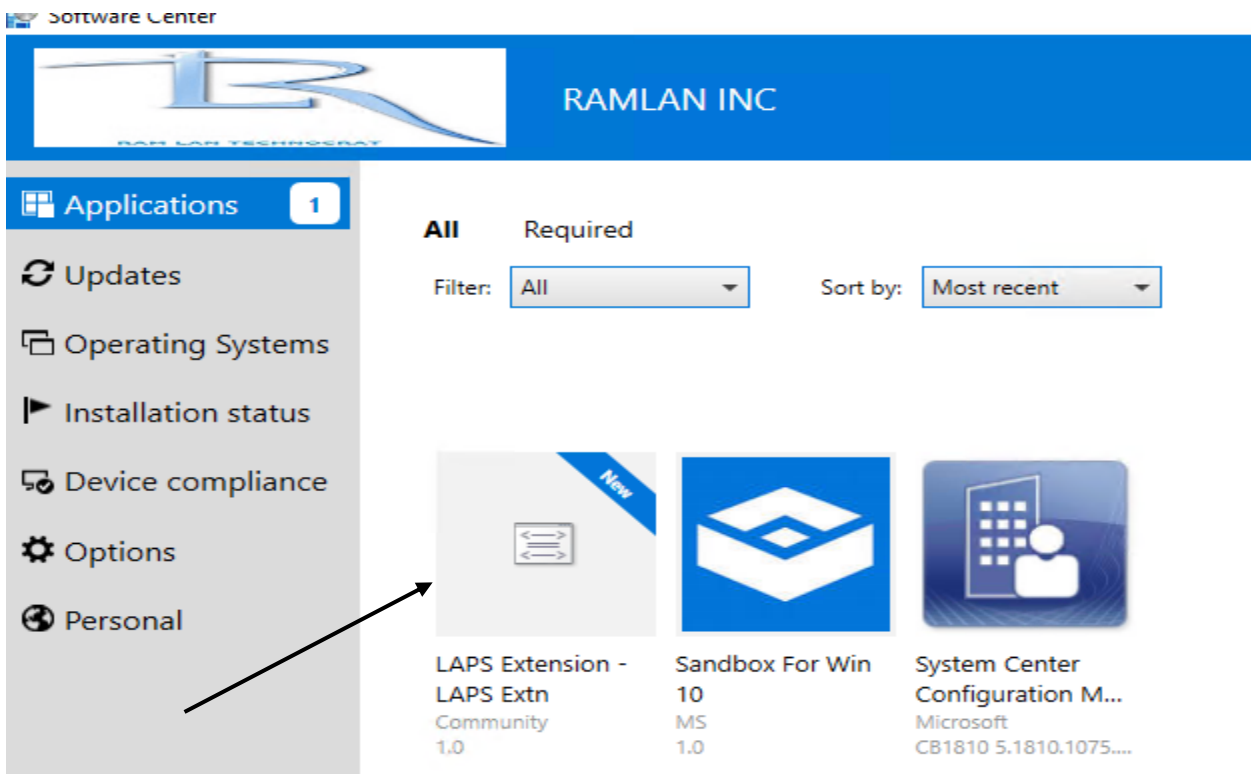
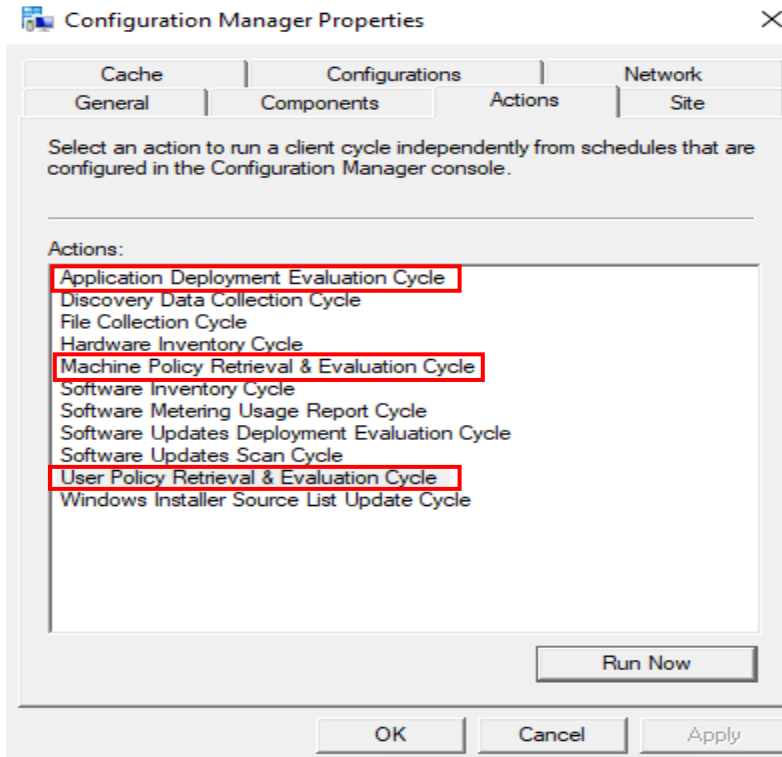
Details:

- Success: General**
 - Software: LAPS Extension (LAPS Extn)
 - Collection: Win 10 (Member Count: 2)
 - Use default distribution point groups associated to this collection: Disabled
 - Automatically distribute content for dependencies: Disabled
- Success: Deployment Settings**
 - Action: Install
 - Purpose: Available
 - Allow clients to use a metered Internet connection to download content: Disabled
- Success: Scheduling**
 - Schedule when this deployment will become available: Disabled
 - Schedule when this deployment will expire: Disabled
 - Rerun behavior: Always rerun program
- Success: User Experience**
 - Allow users to run the program independently of assignments: Enabled
 - Software installation: Disabled
 - System restart (if required to complete the installation): Disabled
 - Allow task sequence to run for client on the Internet: Disabled

To exit the wizard, click Close.

< Previous Next > Summary **Close**

Now we wait for the package to show up on Win 10 workstations or you can open Control Panel – Configuration and run these



RAMLAN INC

Applications > Application details

LAPS Extension - LAPS Extn
Published by Community

Install

Status: Available
Version: 1.0
Date published: 19-Sep-2019

Restart required: No
Download size: Less than 1 MB
Estimated time: Not specified
Language: EN
Total components: 1

RAMLAN INC

Applications > Application details

LAPS Extension - LAPS Extn
Published by Community

Reinstall

Status: Installed
Version: 1.0
Date published: 19-Sep-2019

Restart required: No
Download size: Less than 1 MB
Estimated time: Not specified
Language: EN
Total components: 1

This concludes on how to use LAPS Extension.

Thanks

Ram Lan
19th Sep 2019