

Image Lenovo X1 Tablet Gen 3 for Win 10 v1809 using USBC Network Dongle





In this exercise, I will walk you through the process of setting up Lenovo X1 Tablet Generation 3 for Windows 10 v1809 imaging through Current Branch 1902. There are many things we have to complete before we can deploy and test Windows 10 image. Here are the details:

1. We have to import SCCM package that Lenovo has shared with the community
2. We have to import Ethernet Adapter drivers for boot image
3. Deploy Win 10 through the network using USBC Network Dongle – Please note, I will not be able to test this part as, I don't have a spare Lenovo X1 Tablet Gen 3 at home. I am more than happy to test and report the findings, if, RBC can provide one




I will provide links for read, so you can download what is required and test in your environment.

<https://pcsupport.lenovo.com/be/en/solutions/hf004081>
<https://pcsupport.lenovo.com/be/en/solutions/ht074984>
<https://pcsupport.lenovo.com/be/en/solutions/acc100324>
<https://support.lenovo.com/us/en/solutions/ht503932>




I downloaded and extracted the folders with these drivers to import for deployment through CB 1902. I am going to use Realtek that has necessary drivers to boot the tablet through the network using USBC Network dongle that was provided with the tablet. I will import the drivers to the boot image.

	rtk_winpe-new.7z	C:\Users\Administrator\Downloads\Leno...	27-Apr-2019 12:49 PM	265 KB
	rtk-winpe-w10.zip	C:\Users\Administrator\Downloads\Leno...	27-Apr-2019 12:49 PM	435 KB
	thinkpad_usb3_ethernet_adapter_20181228.zip	C:\Users\Administrator\Downloads\Leno...	27-Apr-2019 12:49 PM	5,750 KB
	tp_kblr_pe1064_201903.exe	C:\Users\Administrator\Downloads\Leno...	27-Apr-2019 12:49 PM	2,942 KB

CB > OS (C:) > Sources > Drivers >

Name	Date modified	Type
 RealTek Network Dongle Drivers	27-Apr-2019 12:40...	File folder
 Tablet X1 Gen 3	27-Apr-2019 3:04 ...	File folder
 Thinkpad USB3 Ethernet adapter Driver	27-Apr-2019 3:06 ...	File folder




CB > OS (C:) > Sources > Drivers > RealTek Network Dongle Drivers > 64

Name	Date modified	Type	Size
 rtux64w10.cat	12-Jul-2018 2:56 PM	Security Catalog	19 KB
 rtux64w10.sys	12-Jul-2018 2:56 PM	System file	521 KB
 rtux64w10a.INF	12-Jul-2018 11:49 ...	Setup Information	594 KB

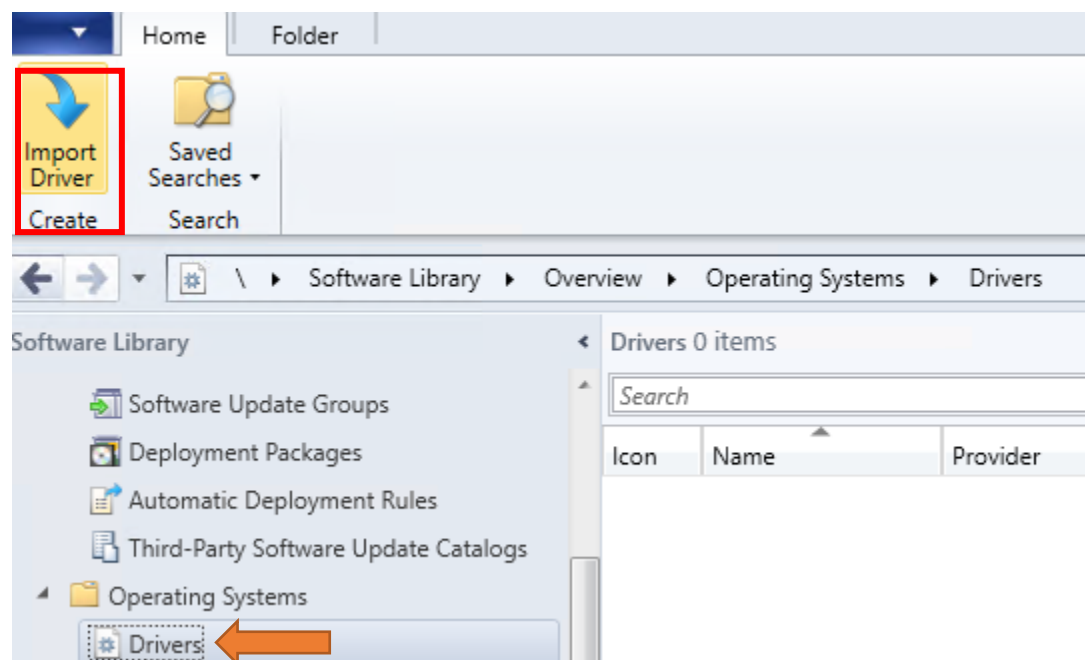
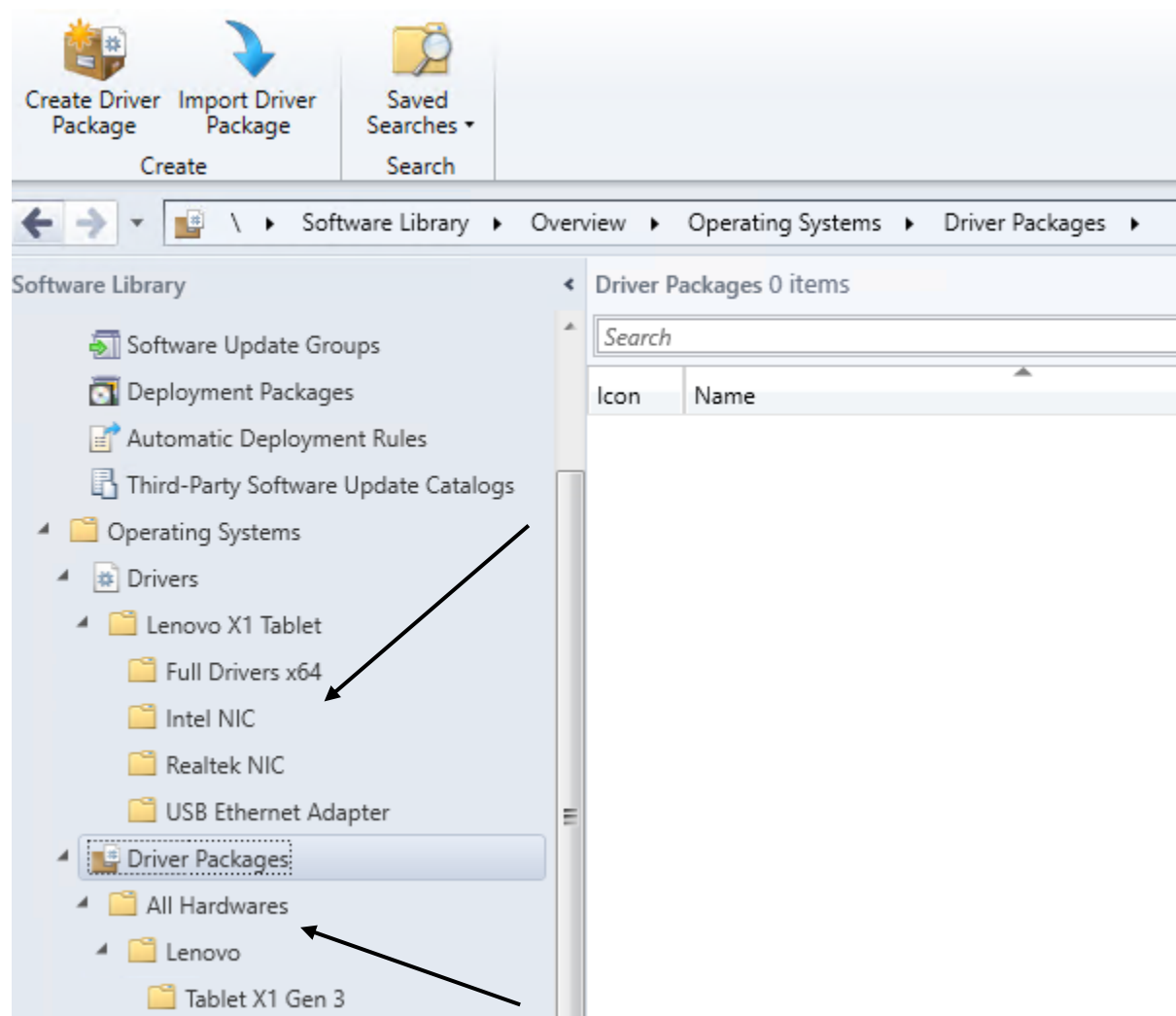
CB > OS (C:) > Sources > Drivers > Tablet X1 Gen 3 > TP_KbLR_PE1064_201903 > ethernet > N20RW03W

Name	Date modified	Type	Size
 e1d65x64.cat	07-Nov-2017 4:04 ...	Security Catalog	15 KB
 e1d65x64.dln	07-Nov-2017 3:57 ...	DIN File	4 KB
 e1d65x64.inf	07-Nov-2017 3:57 ...	Setup Information	157 KB
 e1d65x64.sys	07-Nov-2017 4:04 ...	System file	552 KB
 e1dmsg.dll	07-Nov-2017 4:04 ...	Application extens...	96 KB

CB > OS (C:) > Sources > Drivers > Thinkpad_USB3_Ethernet_adapter_Driver > WIN10 > 64

Name	Date modified	Type	Size
 rtux64w10.cat	21-Dec-2018 10:11...	Security Catalog	21 KB
 rtux64w10.INF	21-Dec-2018 10:11...	Setup Information	605 KB
 rtux64w10.sys	21-Dec-2018 10:11...	System file	538 KB

Now we have the required drivers. Will start importing the drivers to our boot images. Open Configuration Manager Console – Operating Systems – Drivers. **Below is our folder structure.**



Import New Driver Wizard

Locate Driver

Driver Details

Add Driver to Packages

Add Driver to Boot Image

Summary

Progress

Completion

Specify a location to import driver

This wizard allows you to import one or more drivers. You can let Configuration Manager find all drivers in the given network path or specify a specific driver to import.

☒ Import all drivers in the following network path (UNC)

Source folder:

☐ Import a specific driver by specifying the network path (UNC) to its .inf or txtsetup.oem file

Source:

Specify the option for duplicate drivers

< Previous

Next >

Summary

Cancel

Import New Driver Wizard

Driver Details

Locate Driver

Add Driver to Packages

Add Driver to Boot Image

Summary

Progress

Completion

Specify the details for the imported driver

The following drivers will be imported from folder:

\\cb\Sources\Drivers\RealTek Network Dongle Drivers\64\

☐ Hide drivers that are not in a storage or network class (for boot images)

☒ Hide drivers that are not digitally signed

Filter...

File Name	Class	Architecture	Version	Signed
<input checked="" type="checkbox"/> ...rtux64w10a.INF	Net	x64	10.25.10....	Yes

Select All

Clear All

☒ Enable these drivers and allow computers to install them

Assign this driver to one or more categories for filtering.

< Previous

Next >

Summary

Cancel



Add Driver to Packages

Locate Driver

Driver Details

Add Driver to Packages

Add Driver to Boot Image

Summary

Progress

Completion

Select the packages to add the imported driver

Specify the package to add this driver to.

Drivers must be added to packages and deployed to distribution points before computers can use them. Distribution points can be updated immediately.

It is recommended that you add all required drivers before updating the package.

Name	Package ID

Select All

Clear All

New Package...

< Previous

Next >

Summary

Cancel



Add Driver to Boot Images

Locate Driver

Driver Details

Add Driver to Packages

Add Driver to Boot Image

Summary

Progress

Completion

Select drivers to include in the boot image

The imported driver is a network card driver or mass storage device driver and might be necessary for a computer to start.

Select the boot images to include this driver.

Note: Boot images must be updated on their distribution points to add the new drivers.

	Name	Package ID
<input checked="" type="checkbox"/>	Boot image (x64)	TOR00005
<input type="checkbox"/>	Boot image (x86)	TOR00002
<input checked="" type="checkbox"/>	MDT 8456 Boot Capture x64	TOR0001E

Select All

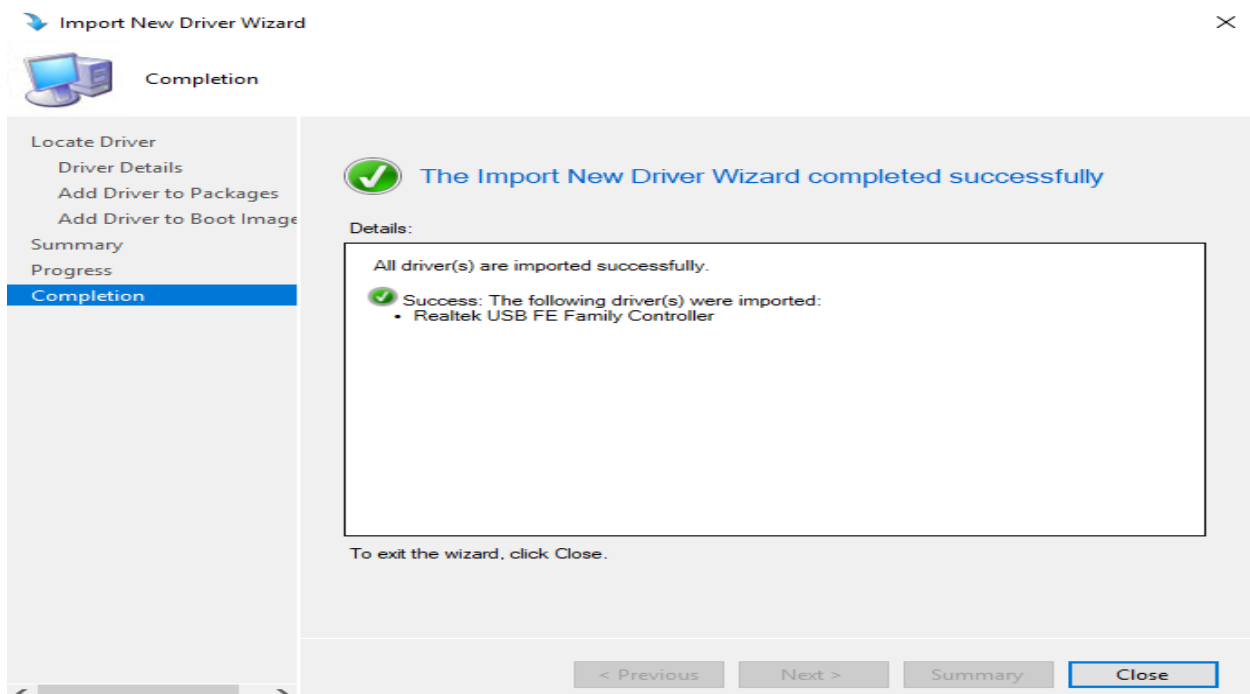
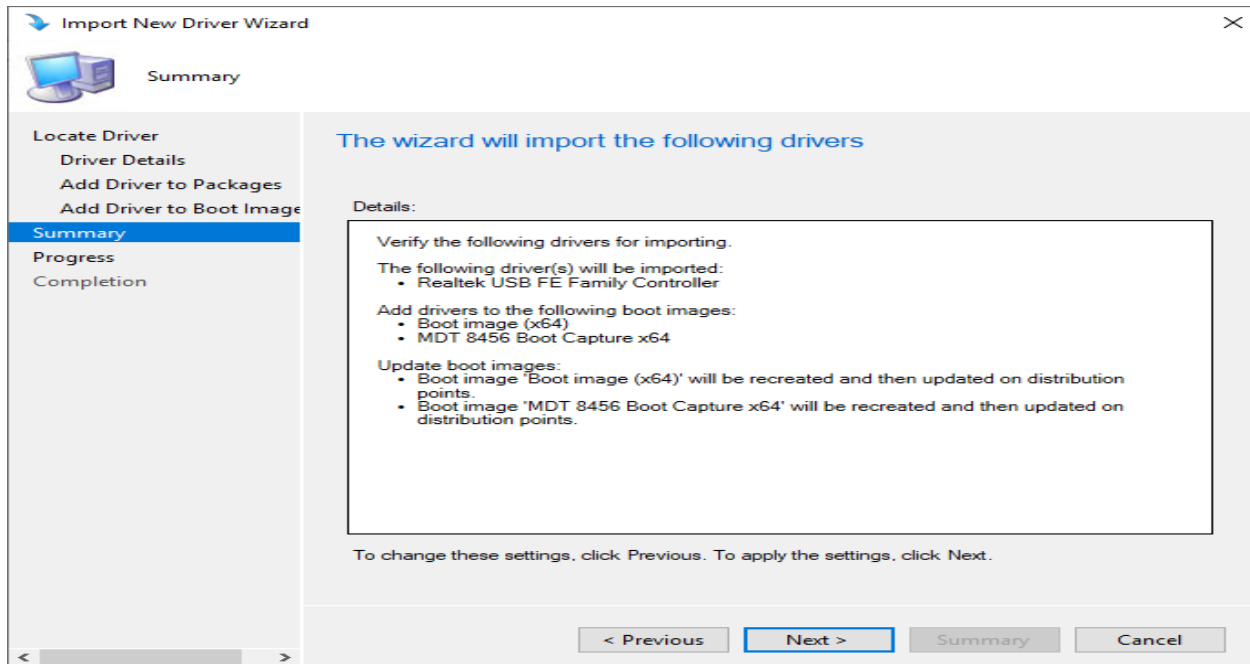
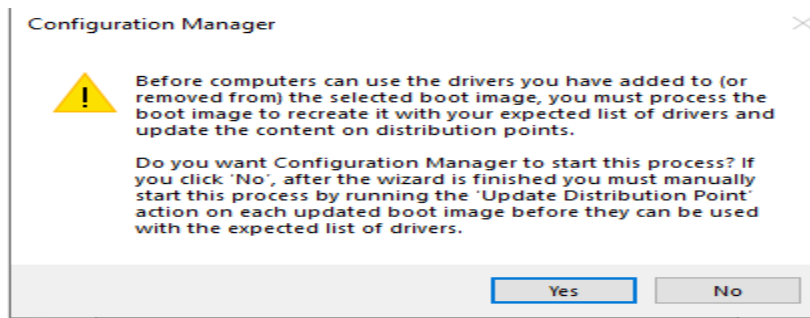
Clear All

< Previous

Next >

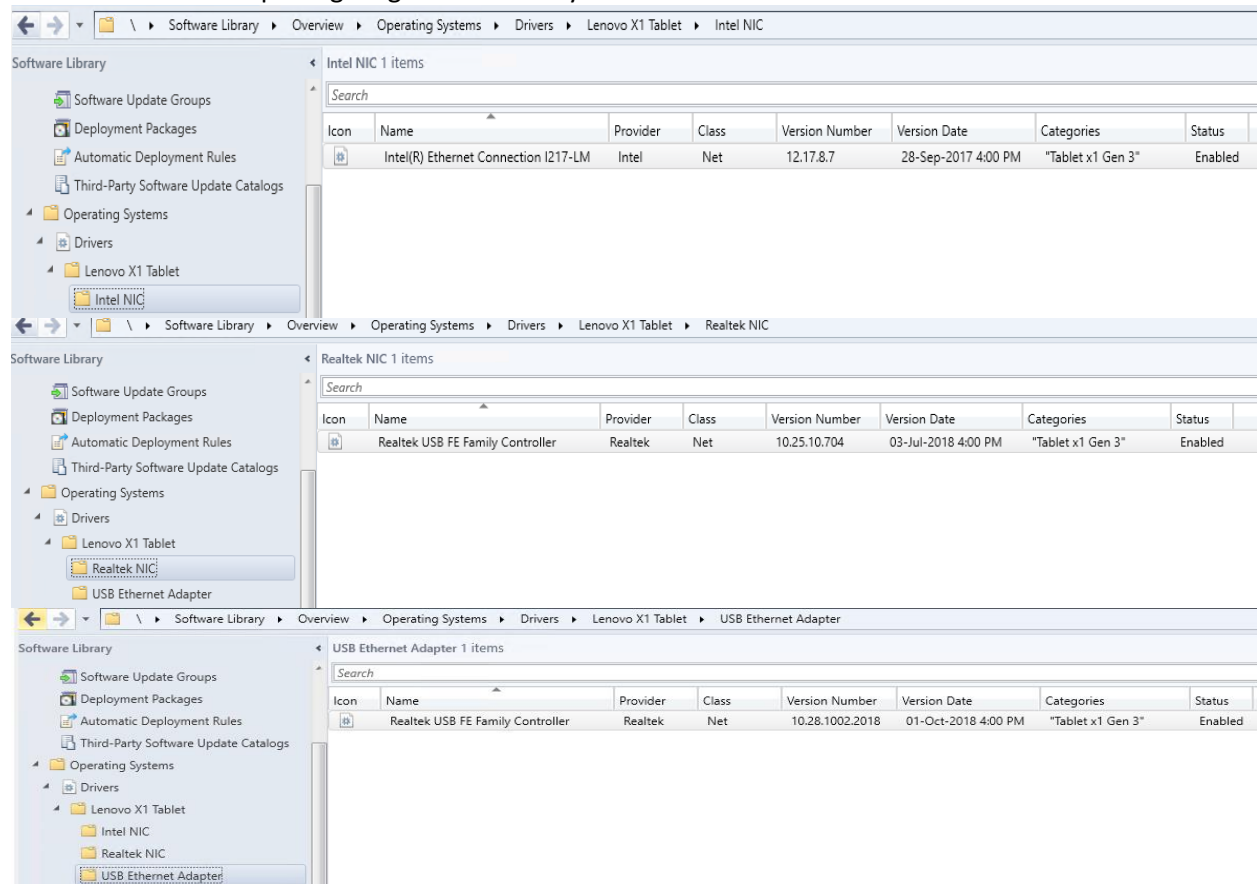
Summary

Cancel

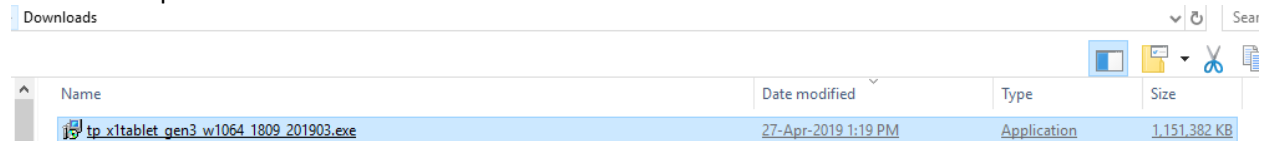


Repeat above same steps for other NIC drivers (USB Ethernet Adapter & Intel NIC)

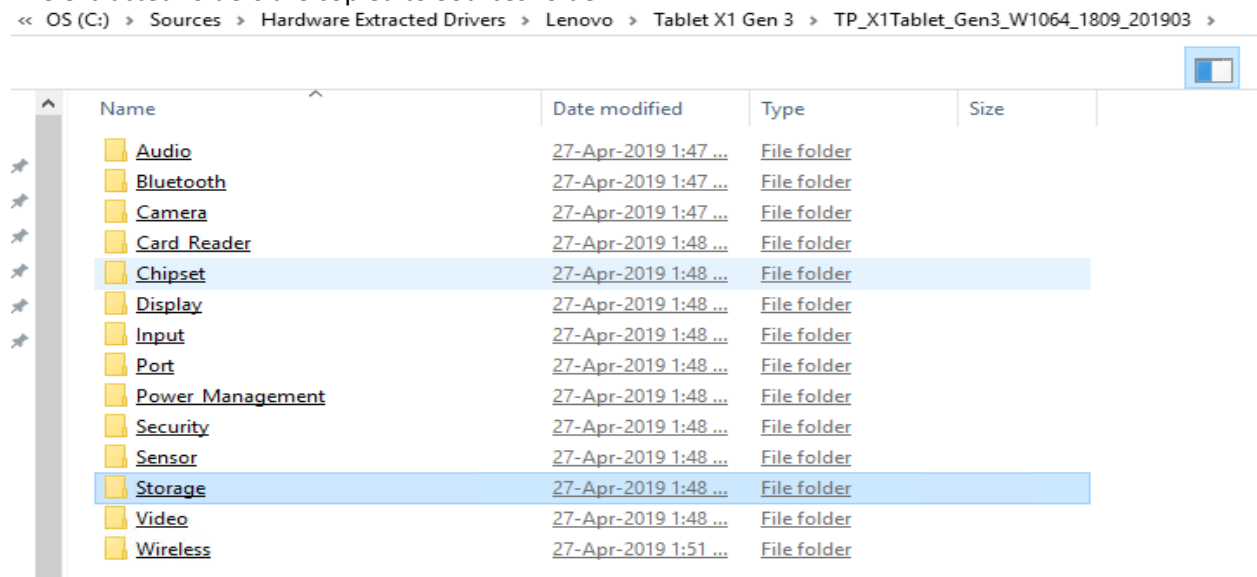
After importing try to do some house cleaning by moving the driver to sub folders, we created under Drivers. This will keep things organized for easy reference later.



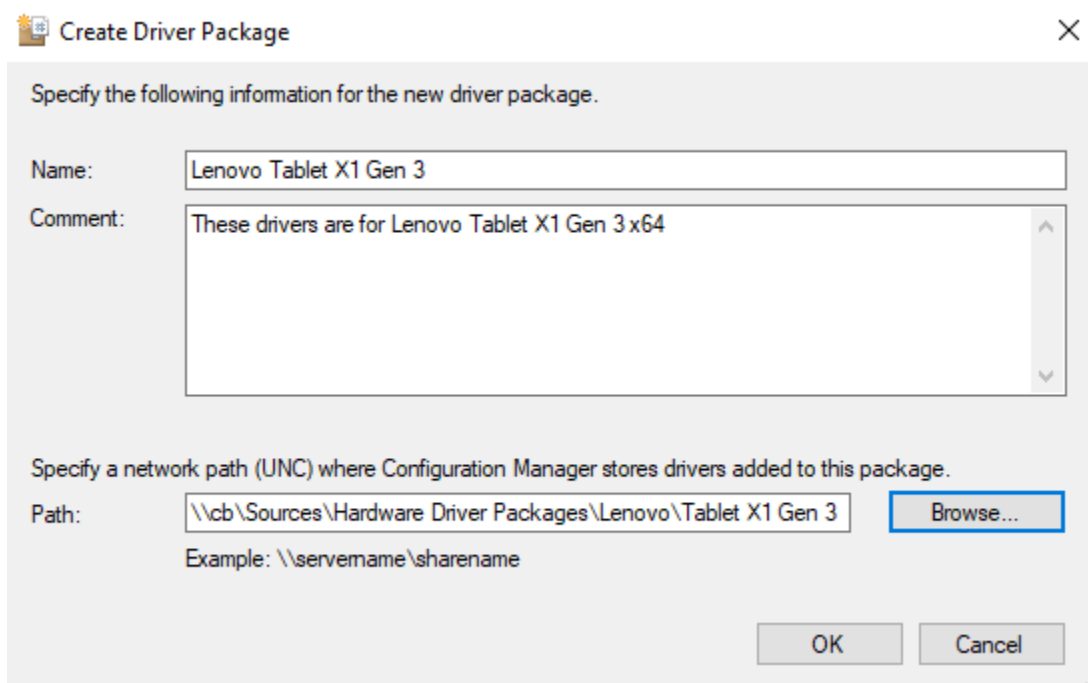
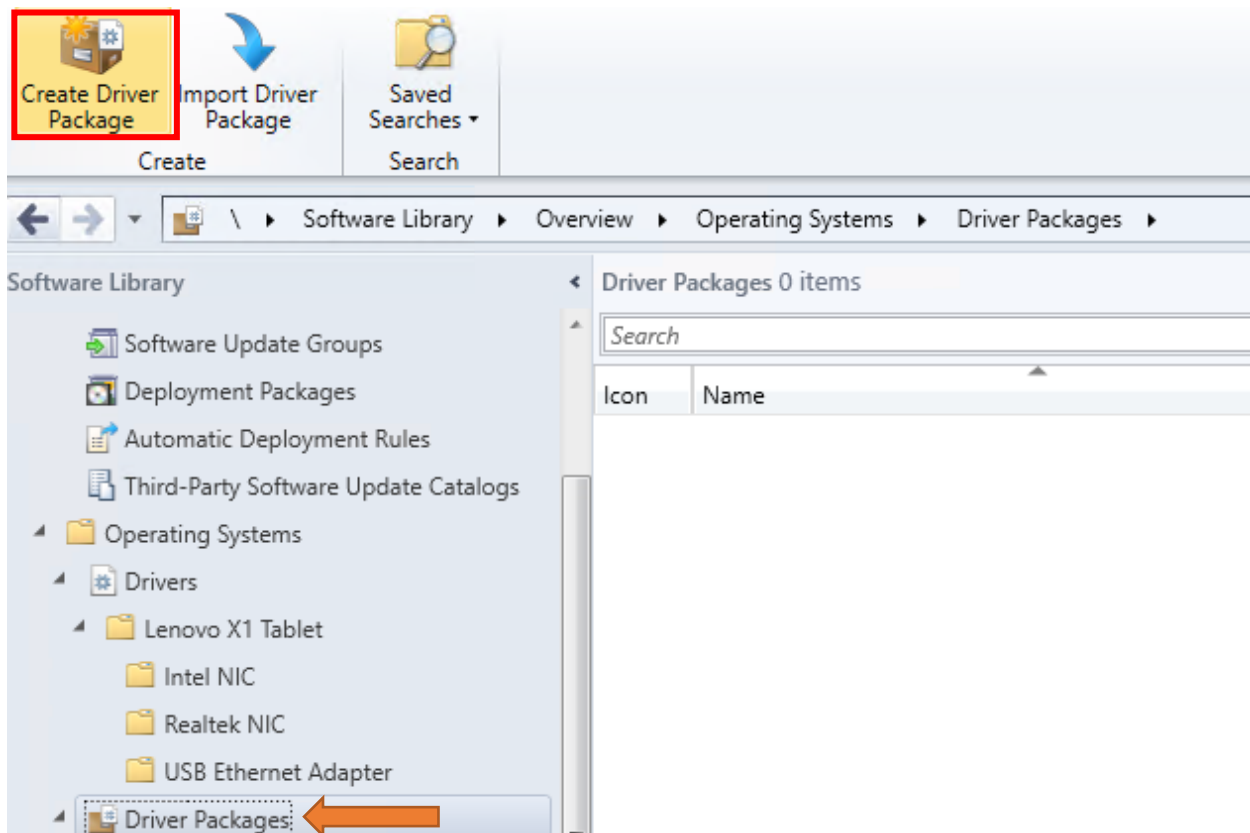
I have downloaded the entire driver package for X1 Tablet from Lenovo for Windows 10 v1809 from here - <https://support.lenovo.com/us/en/downloads/ds502808> - Will import the driver package for use with task sequence later. These drivers are the entire drivers for X1 tablet that are needed for Win 10.

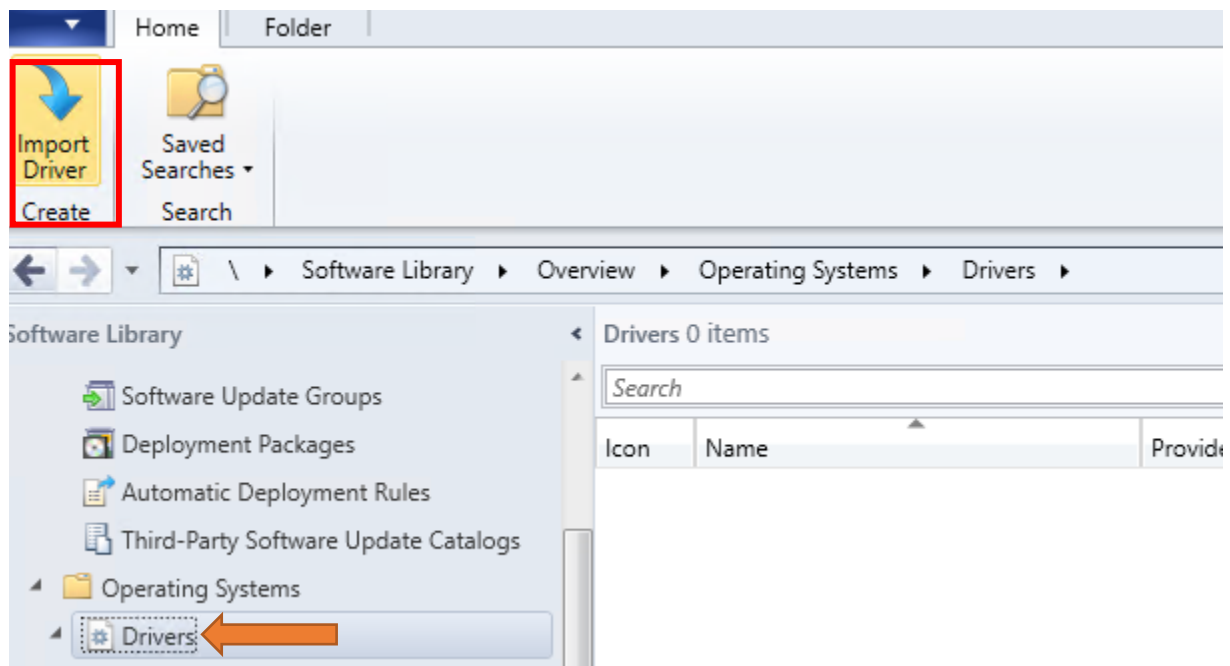


The extracted folders are copied to Sources folder.



Now we will create a Driver Package for Tablet X1 Gen 3.





Import New Driver Wizard



Locate Driver

Locate Driver

Driver Details

Add Driver to Packages

Add Driver to Boot Image

Summary

Progress

Completion

Specify a location to import driver

This wizard allows you to import one or more drivers. You can let Configuration Manager find all drivers in the given network path or specify a specific driver to import.

☒ Import all drivers in the following network path (UNC)

Source folder:

☐ Import a specific driver by specifying the network path (UNC) to its .inf or txtsetup.oem file

Source:

Specify the option for duplicate drivers

Import New Driver Wizard

Driver Details

Locate Driver

Driver Details

Add Driver to Packages

Add Driver to Boot Image

Summary

Progress

Completion

Specify the details for the imported driver

The following drivers will be imported from folder:
\\cb\Sources\Hardware_Extracted_Drivers\Lenovo\Tablet X1 Gen 3\TP_X1Tablet_Gen3_W1064_180

☐ Hide drivers that are not in a storage or network class (for boot images)

☒ Hide drivers that are not digitally signed

Filter...

File Name	Class	Architecture	Version	Signed
<input checked="" type="checkbox"/> ...Audio\N1ZA133W\IntelHDA...	System	x64	1.0.166.0	Yes
<input checked="" type="checkbox"/> ...Audio\N1ZA133W\IntelHDA...	System	x64	9.21.0.4104	Yes
<input checked="" type="checkbox"/> ...Audio\N1ZA133W\IntelHDA...	MEDIA	x64	9.21.4104.1	Yes
<input checked="" type="checkbox"/> ...Audio\N1ZA133W\IntelHDA...	System	x64	9.21.4104.1	Yes

Select All

Clear All

☒ Enable these drivers and allow computers to install them

Assign this driver to one or more categories for filtering.

"Tablet x1 Gen 3"

Categories...

< Previous

Next >

Summary

Cancel

Import New Driver Wizard

Add Driver to Packages

Locate Driver

Driver Details

Add Driver to Packages

Add Driver to Boot Image

Summary

Progress

Completion

Select the packages to add the imported driver

Specify the package to add this driver to.

Drivers must be added to packages and deployed to distribution points before computers can use them. Distribution points can be updated immediately.

It is recommended that you add all required drivers before updating the package.

Name	Package ID
<input checked="" type="checkbox"/> Lenovo Tablet X1 Gen 3	TOR00030

Select All

Clear All

New Package...

< Previous

Next >

Summary

Cancel



Add Driver to Boot Images

Locate Driver

Driver Details

Add Driver to Packages

Add Driver to Boot Images

Summary

Progress

Completion

Select drivers to include in the boot image

The imported driver is a network card driver or mass storage device driver and might be necessary for a computer to start.

Select the boot images to include this driver.

Note: Boot images must be updated on their distribution points to add the new drivers.

	Name	Package ID
<input type="checkbox"/>	Boot image (x64)	TOR00005
<input type="checkbox"/>	Boot image (x86)	TOR00002
<input type="checkbox"/>	MDT 8456 Boot Capture x64	TOR0001E

Select All

Clear All

Don't select anything here. We don't want anything imported to the boot image.

< Previous

Next >

Summary

Cancel



Summary

Locate Driver

Driver Details

Add Driver to Packages

Add Driver to Boot Images

Summary

Progress

Completion

The wizard will import the following drivers

Details:

Verify the following drivers for importing.

The following driver(s) will be imported:

- Detection Verification
- Intel(R) Smart Sound Technology (Intel(R) SST) Audio Controller
- Intel(R) Smart Sound Technology (Intel(R) SST)
- Intel(R) Smart Sound Technology (Intel(R) SST) OED
- Realtek High Definition Audio(SST)
- Realtek High Definition Audio(SST)
- Intel(R) Wireless Bluetooth(R)
- Integrated Camera
- Integrated Camera
- Integrated Camera
- EasyCamera
- EasyCamera
- EasyCamera
- Lenovo EasyCamera
- EasyCamera
- EasyCamera
- Lenovo EasyCamera
- Lenovo EasyCamera
- Lenovo EasyCamera

To change these settings, click Previous. To apply the settings, click Next.

< Previous

Next >

Summary

Cancel



Summary

Locate Driver

Driver Details

Add Driver to Packages

Add Driver to Boot Image

Summary

Progress

Completion

The wizard will import the following drivers

Details:

- Lenovo EasyCamera
- EasyCamera
- Integrated Camera
- Integrated IR Camera
- Integrated Camera
- Integrated 5M Camera
- Integrated IR Camera
- Intel(R) CSI2 Host Controller
- Intel(R) AVStream Camera 2500
- Intel(R) AVStream Camera 2500
- Intel(R) Control Logic
- Intel(R) Imaging Signal Processor 2500
- Camera Sensor IMX135
- Camera Sensor OV8858
- Realtek PCIE CardReader
- Intel(R) Dynamic Platform and Thermal Framework Manager
- Intel(R) Dynamic Platform and Thermal Framework Processor Participant
- Intel(R) Celeron(R)/Pentium(R) Processor SMBUS - 5AD4
- Intel(R) Atom(TM) processor C2000 product family SoC Transaction Router - 1F00
- Intel(R) Atom(TM) processor C2000 product family USB Enhanced Host Controller - 1F2C
- Intel(R) Atom(TM)/Celeron(R)/Pentium(R) Processor Serial IO (SIO) - PWM Port 1 - 0E08

To change these settings, click Previous. To apply the settings, click Next.

< Previous

Next >

Summary

Cancel



Summary

Locate Driver

Driver Details

Add Driver to Packages

Add Driver to Boot Image

Summary

Progress

Completion

The wizard will import the following drivers

Details:

- 0F08
- Intel(R) Celeron(R)/Pentium(R) SM Bus Controller - 2292
- Mobile 5th Generation Intel(R) Core(TM) Host Bridge - OPI - 1600
- Intel(R) Xeon(R) E7 v4/Xeon(R) E5 v4/Xeon(R) E3 v4/Xeon(R) D/Core i7 QuickData Technology Registers - 0C50
- Intel(R) CS3: SD Card - A375
- Intel(R) LPC Controller/eSPI Controller - A300
- Intel(R) Serial IO GPIO Host Controller - 3450
- Intel(R) North Peak - A326
- Intel(R) Thermal Subsystem - A379
- Intel(R) SCS1: eMMC - 9DC4
- I/O LPC Controller - 9D80 for mobile 8th Gen Intel(R) Core(TM) processor family
- Intel(R) LPSS: UART #0 - 9DA8
- Intel(R) North Peak - 9DA6
- Intel(R) Thermal Subsystem - 9DF9
- Intel(R) Host Bridge/DRAM Registers - 3E10
- DH895XCC Series SMBus Controller - 23B0
- Intel(R) Dynamic Platform and Thermal Framework Processor Participant - 3401
- Intel(R) 6 Series/C200 Series Chipset Family PCI Express Root Port 1 - 1C10
- Intel(R) 6 Series/C200 Series Chipset Family USB Enhanced Host Controller - 1C26
- Intel(R) 4th Gen Core processor DRAM Controller - 0D00

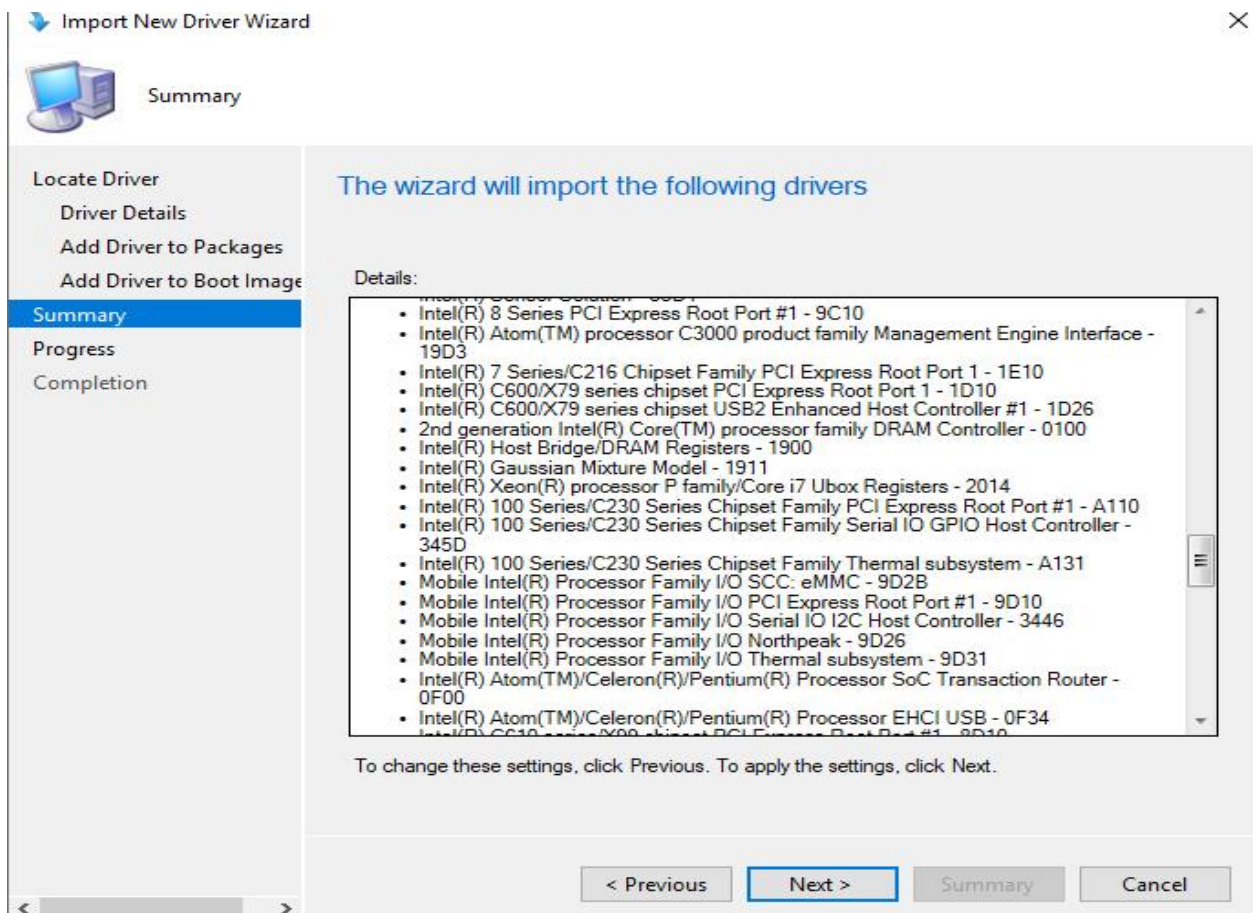
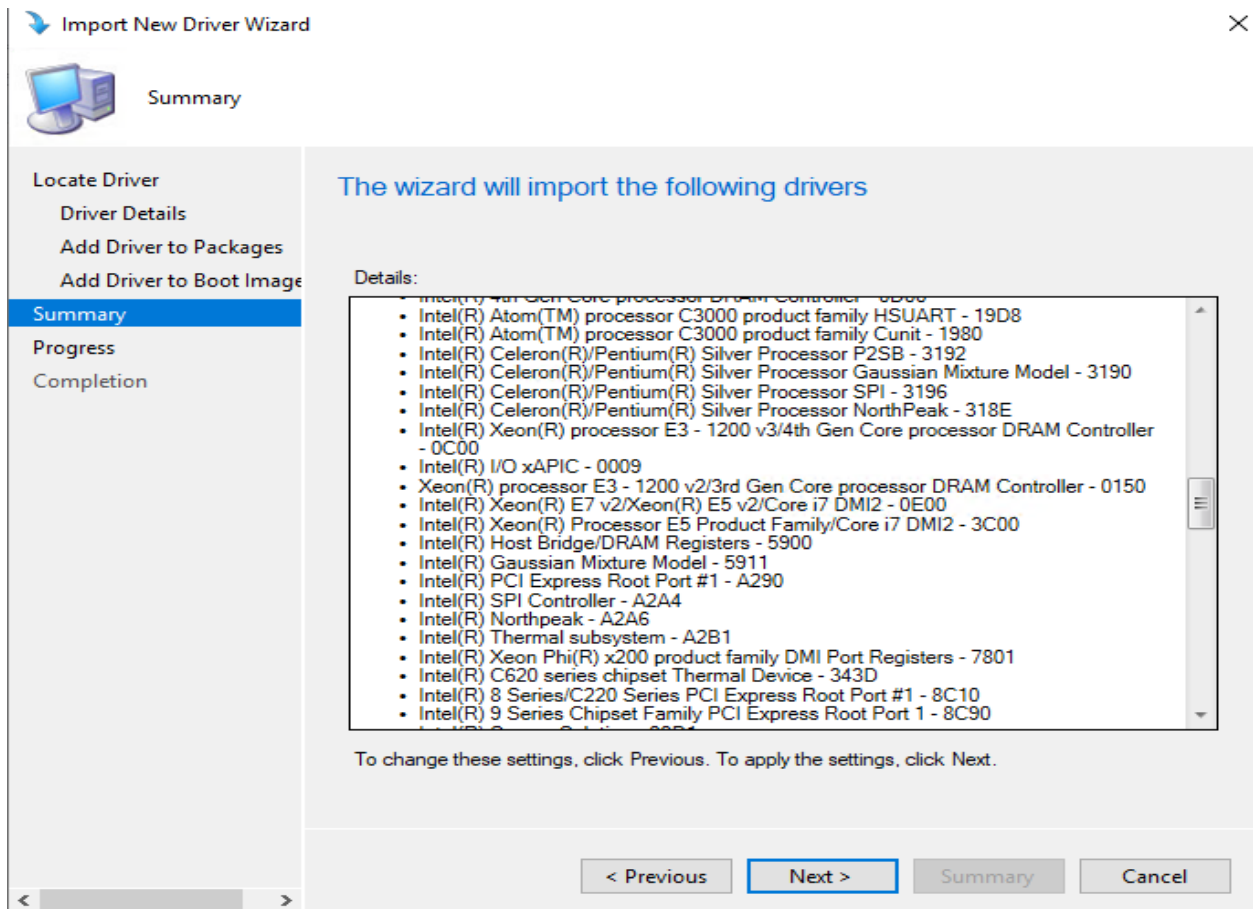
To change these settings, click Previous. To apply the settings, click Next.

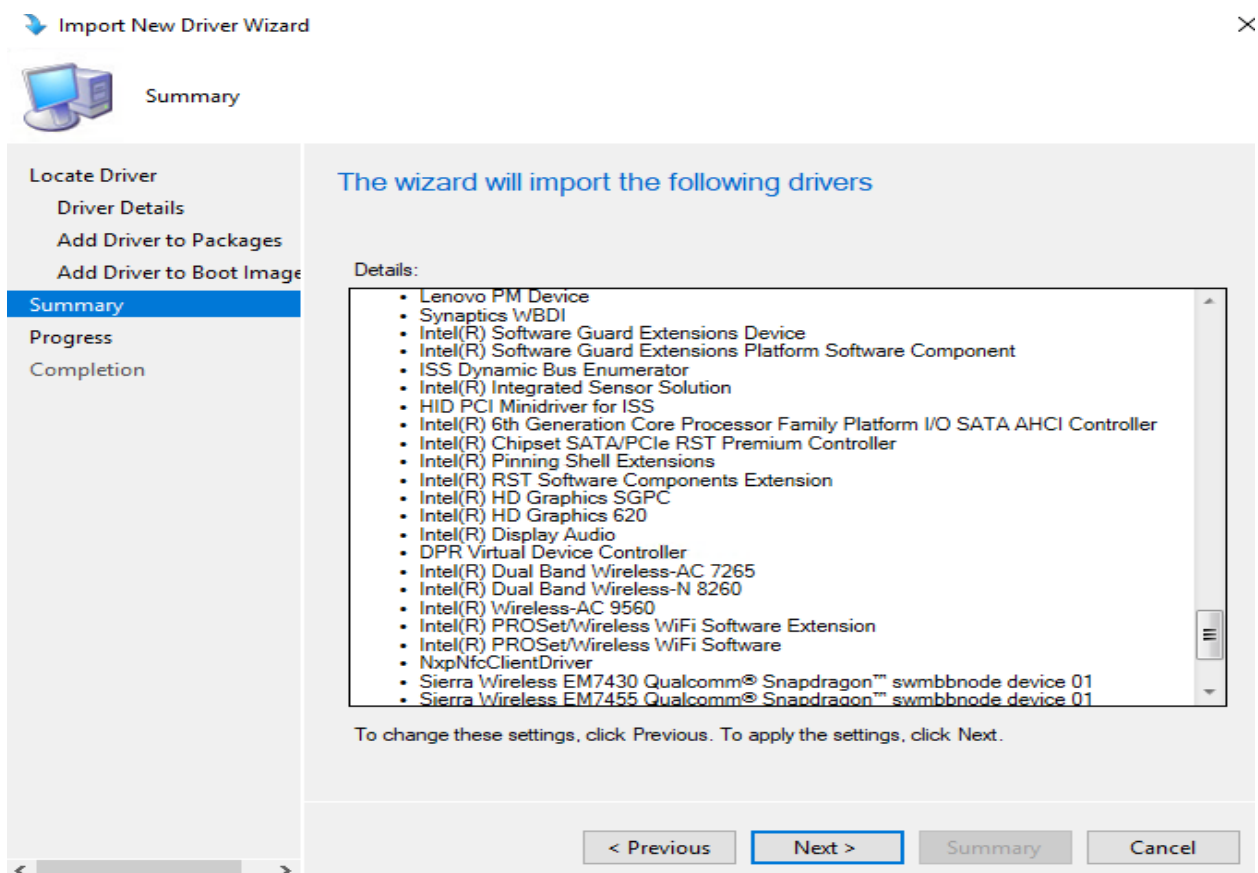
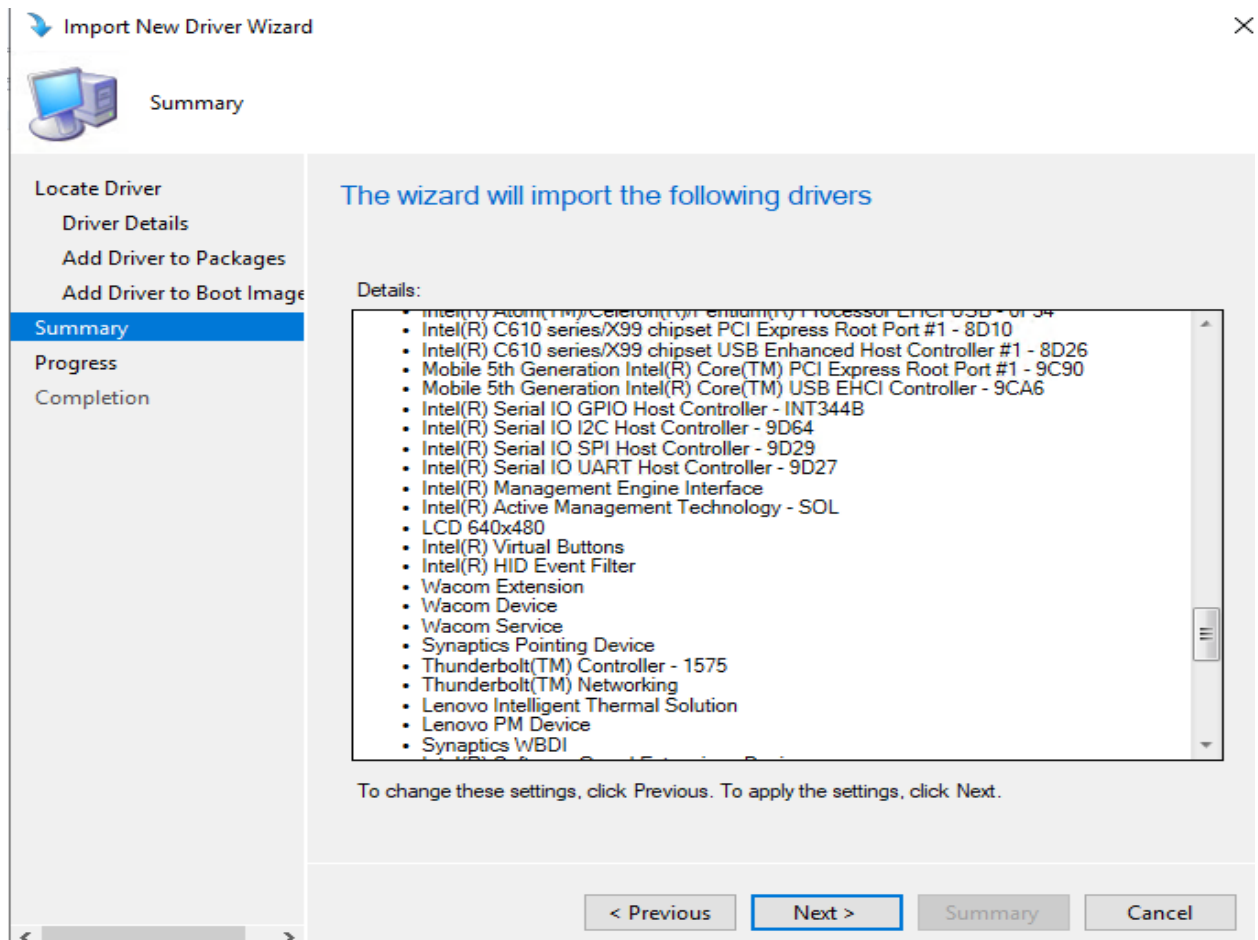
< Previous

Next >

Summary

Cancel







Summary

Locate Driver

Driver Details

Add Driver to Packages

Add Driver to Boot Image

Summary

Progress

Completion

The wizard will import the following drivers

Details:

- Intel(R) Chipset SATA/PCIe RST Premium Controller
- Intel(R) Pinning Shell Extensions
- Intel(R) RST Software Components Extension
- Intel(R) HD Graphics SGPC
- Intel(R) HD Graphics 620
- Intel(R) Display Audio
- DPR Virtual Device Controller
- Intel(R) Dual Band Wireless-AC 7265
- Intel(R) Dual Band Wireless-N 8260
- Intel(R) Wireless-AC 9560
- Intel(R) PROSet/Wireless WiFi Software Extension
- Intel(R) PROSet/Wireless WiFi Software
- NxpNfcClientDriver
- Sierra Wireless EM7430 Qualcomm® Snapdragon™ swmbbnode device 01
- Sierra Wireless EM7455 Qualcomm® Snapdragon™ swmbbnode device 01

Add drivers to the following packages:

- Lenovo Tablet X1 Gen 3

The following driver packages will be created or modified:

- Package 'Lenovo Tablet X1 Gen 3' will be created or modified.

To change these settings, click Previous. To apply the settings, click Next.

< Previous

Next >

Summary

Cancel



Completion

Locate Driver

Driver Details

Add Driver to Packages

Add Driver to Boot Image

Summary

Progress

Completion



The Import New Driver Wizard completed successfully

Details:

All driver(s) are imported successfully.

- Success: The following driver(s) were imported:
 - Detection Verification
 - Intel(R) Smart Sound Technology (Intel(R) SST) Audio Controller
 - Intel® Smart Sound Technology (Intel® SST)
 - Intel(R) Smart Sound Technology (Intel(R) SST) OED
 - Realtek High Definition Audio(SST)
 - Realtek High Definition Audio(SST)
 - Intel(R) Wireless Bluetooth(R)
 - Integrated Camera
 - Integrated Camera
 - Integrated Camera
 - EasyCamera
 - EasyCamera
 - EasyCamera
 - EasyCamera
 - Lenovo EasyCamera
 - EasyCamera
 - EasyCamera

To exit the wizard, click Close.

< Previous

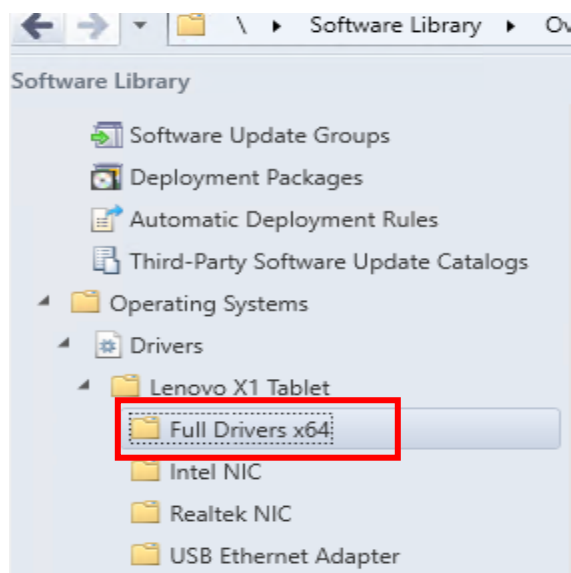
Next >

Summary

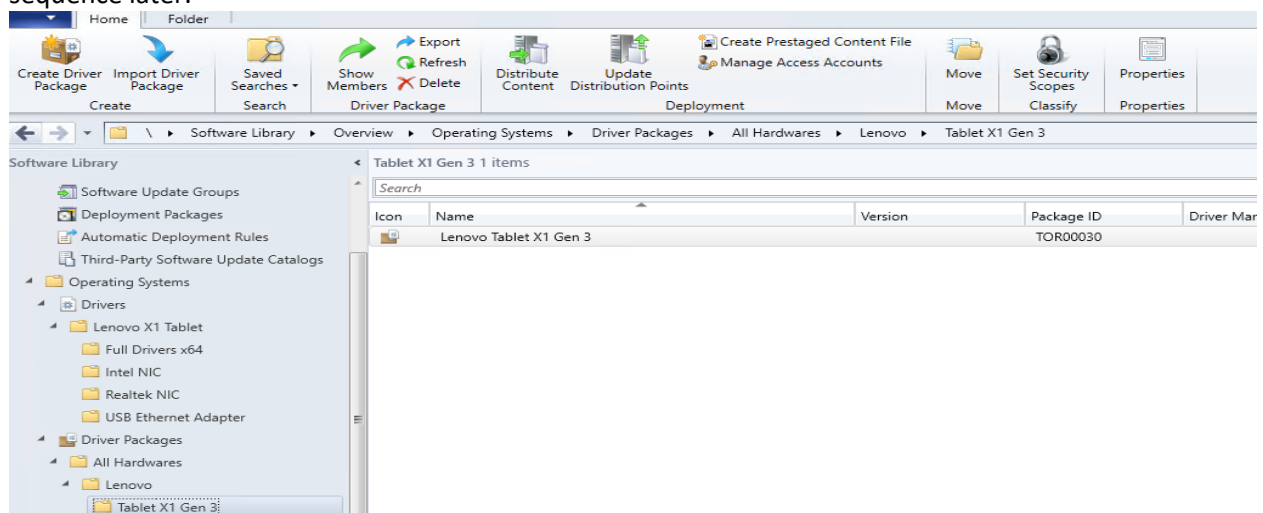
Close

Icon	Name	Provider	Class	Version Number	Version Date	Categories	Status
	2nd generation Intel(R) Core(TM) processor family DRAM Controller - 0100	INTEL	System	10.1.3.1	30-Dec-1999 2:00 PM	"Tablet x1 Gen 3"	Enabled
	Camera Sensor IMX135	Intel Corporation	System	30.15063.6.8317	04-Nov-2018 2:00 PM	"Tablet x1 Gen 3"	Enabled
	Camera Sensor OV8858	Intel Corporation	System	30.15063.8317.1	13-Nov-2018 2:00 PM	"Tablet x1 Gen 3"	Enabled
	Detection Verification	Intel(R) Corpor...	System	1.0.166.0	05-Feb-2019 2:00 PM	"Tablet x1 Gen 3"	Enabled
	DH895XCC Series SMBus Controller - 23B0	INTEL	System	10.1.3.1	30-Dec-1999 2:00 PM	"Tablet x1 Gen 3"	Enabled
	DPR Virtual Device Controller	LCFC	System	1.0.0.1	27-Sep-2017 4:00 PM	"Tablet x1 Gen 3"	Enabled
	EasyCamera	Realtek	Camera	10.0.17763.20065	24-Oct-2018 4:00 PM	"Tablet x1 Gen 3"	Enabled
	EasyCamera	Realtek	Camera	10.0.17763.20065	24-Oct-2018 4:00 PM	"Tablet x1 Gen 3"	Enabled
	EasyCamera	Realtek	Camera	10.0.17763.20065	24-Oct-2018 4:00 PM	"Tablet x1 Gen 3"	Enabled
	EasyCamera	SunplusIT	Camera	5.0.18.32	21-Oct-2018 4:00 PM	"Tablet x1 Gen 3"	Enabled
	EasyCamera	Realtek	Camera	10.0.17763.20065	24-Oct-2018 4:00 PM	"Tablet x1 Gen 3"	Enabled
	EasyCamera	Realtek	Camera	10.0.17763.20065	24-Oct-2018 4:00 PM	"Tablet x1 Gen 3"	Enabled
	EasyCamera	Realtek	Camera	10.0.17763.20065	24-Oct-2018 4:00 PM	"Tablet x1 Gen 3"	Enabled
	HID PCI Minidriver for ISS	Intel	HIDClass	3.1.0.3821	23-Oct-2018 4:00 PM	"Tablet x1 Gen 3"	Enabled
	I/O LPC Controller - 9D80 for mobile 8th Gen Intel(R) Core(TM) processor family	INTEL	System	10.1.15.3	30-Dec-1999 2:00 PM	"Tablet x1 Gen 3"	Enabled
	Integrated 5M Camera	SunplusIT	Camera	5.0.18.32	21-Oct-2018 4:00 PM	"Tablet x1 Gen 3"	Enabled
	Integrated Camera	SunplusIT	Camera	5.0.18.32	21-Oct-2018 4:00 PM	"Tablet x1 Gen 3"	Enabled
	Integrated Camera	Realtek	Camera	10.0.17763.20065	24-Oct-2018 4:00 PM	"Tablet x1 Gen 3"	Enabled
	Integrated Camera	Realtek	Camera	10.0.17763.20065	24-Oct-2018 4:00 PM	"Tablet x1 Gen 3"	Enabled
	Integrated Camera	SunplusIT	Camera	5.0.18.32	21-Oct-2018 4:00 PM	"Tablet x1 Gen 3"	Enabled
	Integrated Camera	Realtek	Camera	10.0.17763.20065	24-Oct-2018 4:00 PM	"Tablet x1 Gen 3"	Enabled
	Integrated IR Camera	SunplusIT	Camera	5.0.18.32	21-Oct-2018 4:00 PM	"Tablet x1 Gen 3"	Enabled

After importing move all the drivers to this new folder, I created for good house keeping.



Now we have all the things ready. We can distribute Driver package so that it will be available for task sequence later.





General

General

Content Destination

Summary

Progress

Completion

Review selected content

You have selected the following content for distribution.

Content:

Lenovo Tablet X1 Gen 3

Some content might have associated dependencies that must be installed before the content can be installed.

☐ Detect associated content dependencies and add them to this distribution

< Previous

Next >

Summary

Cancel



Content Destination

General

Content Destination

Summary

Progress

Completion

Specify the content destination

Content will be distributed to the following distribution points, distribution point groups, and the distribution point groups that are currently associated with collections.

Content destination:

Filter...



Add ▼

Remove

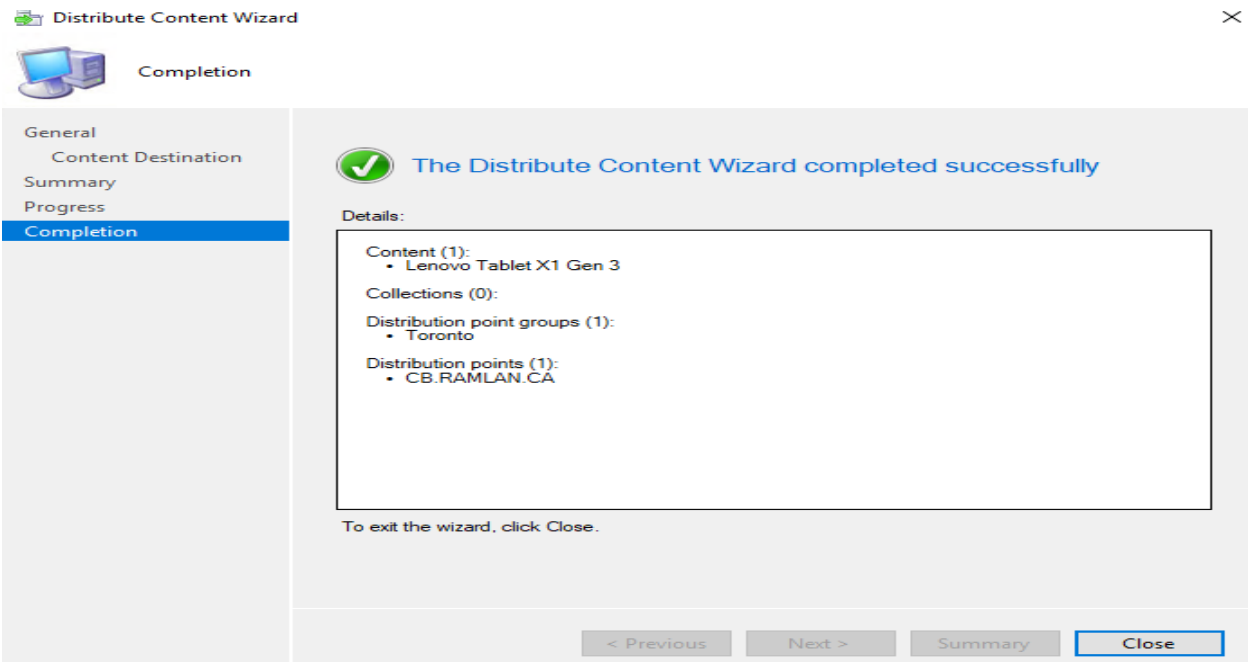
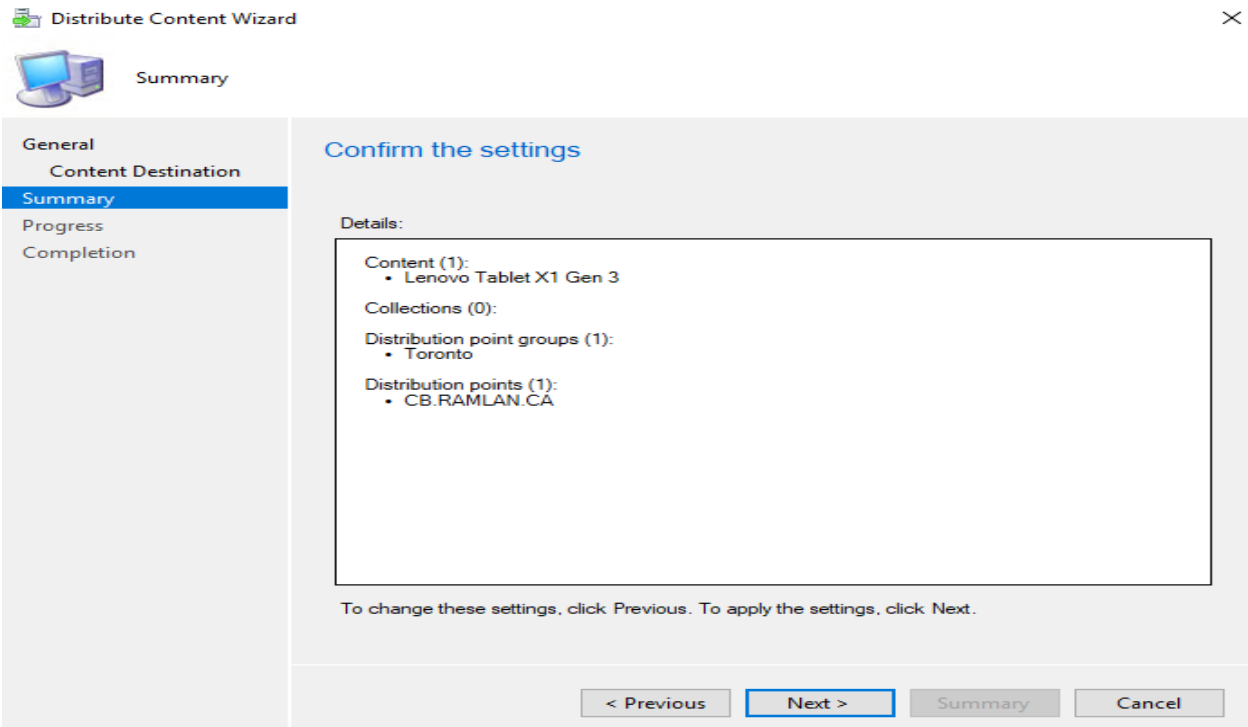
Name	Description	Associations
CB.RAMLAN.CA	Distribution point	
Toronto	Distribution point group	0

< Previous

Next >

Summary

Cancel



So, we have done all that is required for imaging Lenovo X1 Tablet Gen 3 through the network. Unfortunately, I cannot test this part as, I don't have a spare tablet at home. I hope this might help RBC Engineering to implement and test in their environment and make the task sequence available for deployment to all depots that might receive Lenovo Tablet X1 Gen 3 in the future.

I hope this is a good read for those who want to acquire knowledge in SCCM.

Thanks

Ram Lan
27th Apr 2019