

Deploying Configuration Manager Console to Workstations through Software Center

In this post, I will show you how to create an application and deploy configuration manager console through software center.

For this we need to copy ConsoleSetup file from the server. It is located at this place.

CB > OS (C:) > Program Files > Microsoft Configuration Manager > tools >

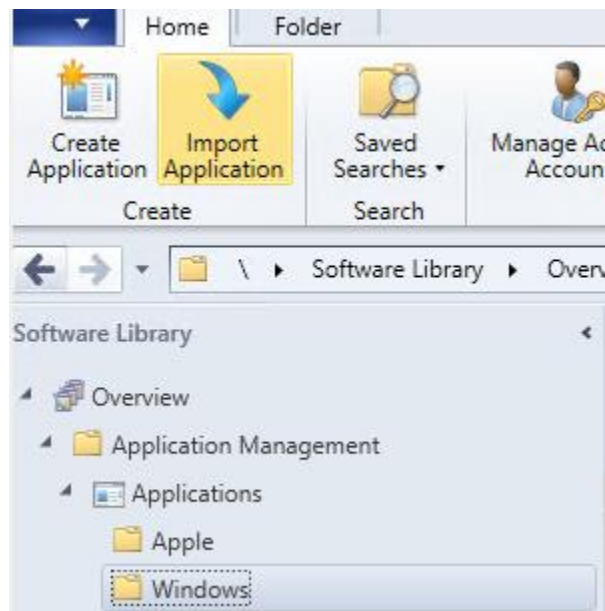
Name	Date modified	Type	Size
ClientTools	06-Jan-2019 6:14 P...	File folder	
ConfigMgrADMTemplates	06-Jan-2019 6:14 P...	File folder	
ConsoleSetup	06-Jan-2019 4:45 P...	File folder	
PortConfiguration	06-Jan-2019 6:14 P...	File folder	
ServerTools	06-Jan-2019 6:14 P...	File folder	
SupportCenter	06-Jan-2019 6:14 P...	File folder	
UploadOfflineFeedback	06-Jan-2019 6:14 P...	File folder	
cmtrace.exe	13-Dec-2018 3:14 ...	Application	725 KB

Copy of the shared location on the Server.


CB > OS (C:) > Sources > Windows Application >


Name	Date modified	Type	Size
7Zip	13-Jan-2019 9:25 ...	File folder	
AdobeFiles	23-Feb-2019 1:46 ...	File folder	
Core.FTP	13-Jan-2019 8:43 ...	File folder	
Q365	19-Jan-2019 3:42 P...	File folder	
Office 2019	20-Jan-2019 6:29 ...	File folder	
SCCM Console	23-Feb-2019 9:53 ...	File folder	
VLC	13-Jan-2019 8:51 ...	File folder	

Now we are ready to create an application.



Though we won't use the MSI as our actual installer, we will let the Create Application Wizard grab all of our relevant information from the MSI before changing the setup type to the executable.

 Create Application Wizard ✕

 General

General

Import Information

Summary

Progress

Completion

Specify settings for this application

Applications contain software that you can deploy to users and devices in your Configuration Manager environment. Applications can contain multiple deployment types that customize the installation behavior of the application.


☒ Automatically detect information about this application from installation files:


Type:

Location:

Example: \\Server\Share\File

☐ Manually specify the application information

 Create Application Wizard ✕

 Import Information

General

Import Information


General Information

Summary

Progress

Completion

View imported information

 Application information successfully imported from the Windows Installer (*.msi file) file.

Details:

Application name: System Center Configuration Manager Console
Publisher:
Software version:

Deployment type name: System Center Configuration Manager Console - Windows Installer (*.msi file)
Product Code: {4F7840A9-9816-45E2-9F6C-F7067A8BC0FD}
Installation behavior: Install for system

Content location: \\cb\Sources\Windows Application\SCCM Console\
Number of files: 4
Content files:
AdminConsole.msi
ConsoleSetup.exe
download.jpg
ReportViewer.exe

To modify any details from the imported information, click Next. To exit this wizard without creating the application, click Cancel.



General Information

General

Import Information

General Information

Summary

Progress

Completion

Specify information about this application

Name:	System Center Configuration Manager Console
Administrator comments:	
Publisher:	Microsoft
Software version:	CB1810 5.1810.1075.1000
Optional reference:	
Administrative categories:	"Tools" Select...

Specify the installation program for this application and the required installation rights.

Installation program:	ager\AdminConsole" DefaultSiteServerName=cb.ramlan.ca /	Browse...
<input type="checkbox"/> Run installation program as 32-bit process on 64-bit clients.		
Install behavior:	Install for system	

< Previous

Next >

Summary

Cancel

consolesetup.exe TargetDir="C:\Program Files (x86)\Microsoft Configuration Manager\AdminConsole" DefaultSiteServerName=cb.ramlan.ca /q



Summary

General

Import Information

General Information

Summary

Progress

Completion

Confirm the settings for this application

Details:

- General Information:
- Application name: System Center Configuration Manager Console
 - Administrator comments:
 - Publisher: Microsoft
 - Software version: CB1810 5.1810.1075.1000
 - Optional reference:
- Categories:
- Tools
- Deployment type name: System Center Configuration Manager Console - Windows Installer (*.msi file)
- Requirement rules:
- Content:
- Content location: \cb\Sources\Windows Application\SCCM Console\
 - Installation program: consolesetup.exe TargetDir="C:\Program Files (x86)\Microsoft Configuration Manager\AdminConsole" DefaultSiteServerName=cb.ramlan.ca /
- Detection Method:
- Product code: {4F7840A9-9816-45E2-9F6C-F7067A8BC0FD}
- User Experience:
- Installation behavior: Install for system

To change these settings, click Previous. To apply the settings, click Next.

< Previous

Next >

Summary

Cancel

Create Application Wizard Completion

General
Import Information
General Information
Summary
Progress
Completion

The Create Application Wizard completed successfully

Details:

- Success: General Information:
 - Application name: System Center Configuration Manager Console
 - Administrator comments:
 - Publisher: Microsoft
 - Software version: CB1810.5.1810.1075.1000
 - Optional reference:
- Success: Categories:
 - Tools
- Success: Deployment type name: System Center Configuration Manager Console - Windows Installer (*.msi file)
- Success: Requirement rules:
- Success: Content:
 - Content location: \\cb\Sources\Windows_Application\SCCM Console\
 - Installation program: consolesetup.exe TargetDir="C:\Program Files (x86)\Microsoft Configuration Manager\AdminConsole" DefaultSiteServerName=cb.ramlan.ca /
- Success: Detection Method:
 - Product code: {4F7840A9-9816-45E2-9F6C-F7067A8BC0FD}

To exit the wizard, click Close.

< Previous Next > Summary **Close**

Create Application Import Application Saved Searches Manage Access Accounts Create Prestaged Content File Revision History Create Deployment Type Convert to .MSIX Export Delete Reinstall Copy Refresh Simulate Deployment Deploy

Software Library Overview Application Management Applications Windows

Software Library Overview

Application Management Applications Windows

Windows 7 items

Icon	Name	Deployment Types	Deployments	Status
	7-Zip 18.06 (x64 edition)	1	1	Active
	Adobe Acrobat Reader DC	1	2	Active
	Core FTP LE x64	1	1	Active
	Office 2019 Professional	1	1	Active
	Office 365 ProPlus	1	1	Active
	System Center Configuration Manager Console	1	0	Active
	VLC media player 3.0.6 (64-bit)	1	1	Active

Right now, you have an SCCM application that will install the Configuration Manager Console. You may want to do two additional advanced steps to configure your environment.

First, you may wish to restrict the operating system or system architecture that the application can be installed on. In the installation properties above, I manually specified that the application should install in Program Files (x86). Obviously, I do not want a 32-bit machine to install the Console.

Create Requirement

Category: Device

Condition: Operating system

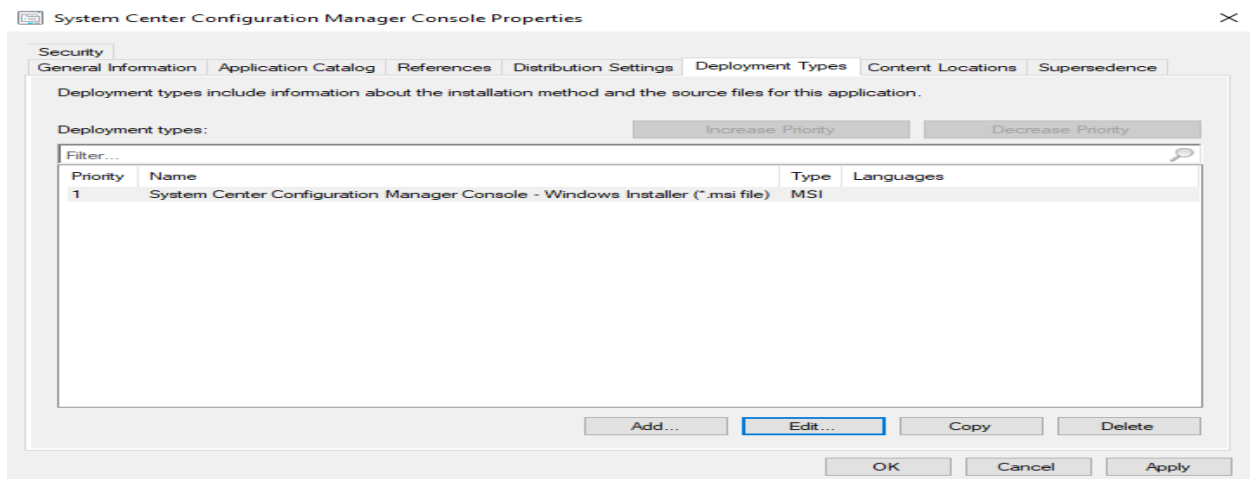
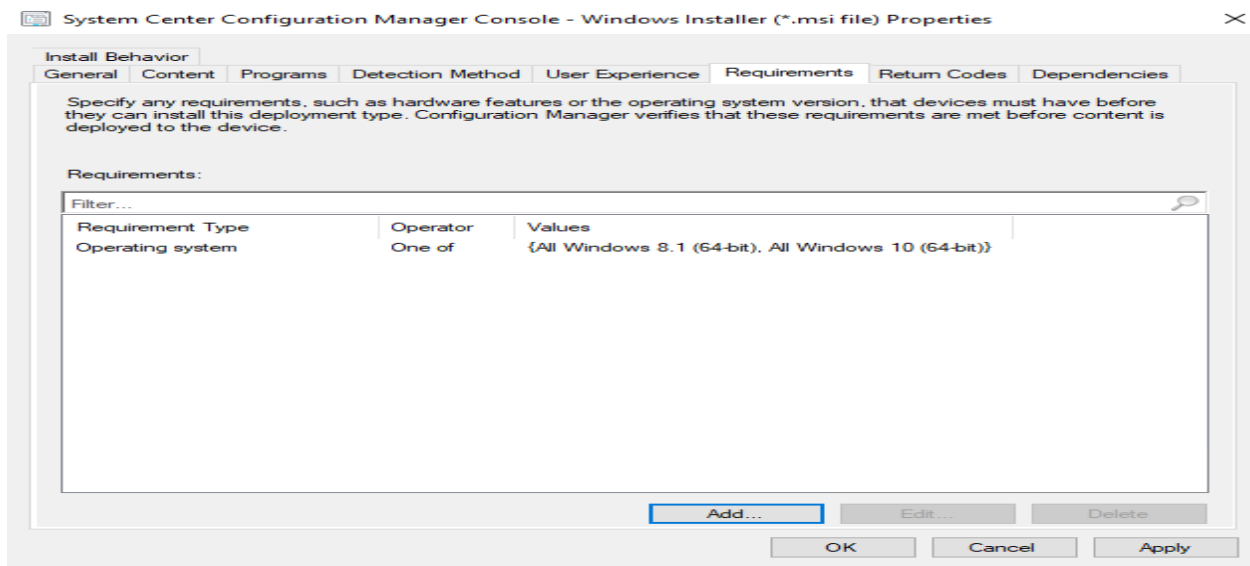
Rule type: Value

Operator: One of

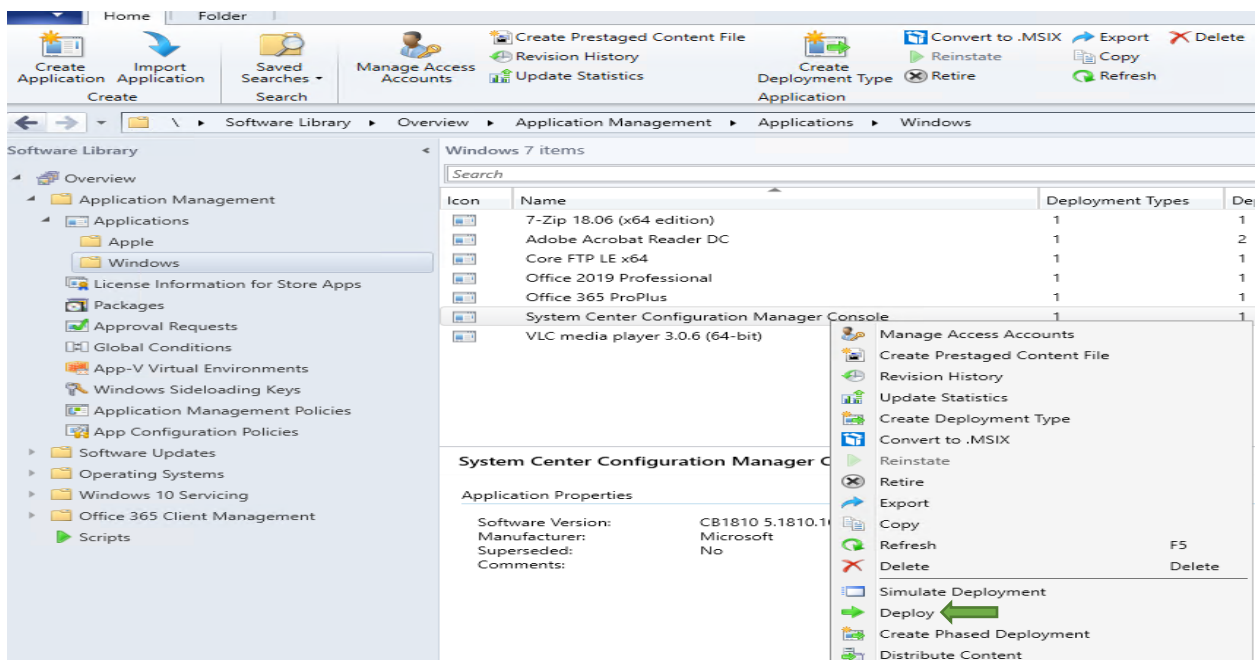
Select all

- Windows 8
 - Windows 8.1
 - All Windows RT 8.1
 - ☒ All Windows 8.1 (64-bit)
 - All Windows 8.1 (32-bit)
 - Windows 10
 - ☒ All Windows 10 (64-bit)
 - All Windows 10 (32-bit)
 - Windows 2003

OK Cancel



Now it is time to deploy to a collection.





General

General

Content
Deployment Settings
Scheduling
User Experience
Alerts
Summary
Progress
Completion

Specify general information for this deployment

Software:

Collection:

☐ Use default distribution point groups associated to this collection

☒ Automatically distribute content for dependencies

Comments (optional):

< Previous

Next >

Summary

Cancel



Content

General

Content
Deployment Settings
Scheduling
User Experience
Alerts
Summary
Progress
Completion

Specify the content destination

Distribution points or distribution point groups that the content has been distributed to:

Name	Type
There are no items to show in this view.	

Additional distribution points, distribution point groups, and the distribution point groups that are currently associated with collections to distribute content to:

Filter...			Add ▼
Name	Description	Associations	
Toronto	Distribution point group	0	Remove

< Previous

Next >

Summary

Cancel



Deployment Settings

General

Content

Deployment Settings

Scheduling

User Experience

Alerts

Summary

Progress

Completion

Specify settings to control how this software is deployed

Action: Purpose: ☐ Allow end users to attempt to repair this application☐ An administrator must approve a request for this application on the device

If you also specify an email address, anyone who receives or is forwarded the email can approve this request.

Learn more

Example: user1@contoso.com; user2@contoso.com; user3@contoso.com

< Previous

Next >

Summary

Cancel



Scheduling

General

Content

Deployment Settings

Scheduling

User Experience

Alerts

Summary

Progress

Completion

Specify the schedule for this deployment

This application will be available as soon as possible by default. If this application should be made available at a different time, change the availability time to the desired UTC time.

Time based on: ☐ Schedule the application to be available at:

< Previous

Next >

Summary

Cancel



General

Content

Deployment Settings

Scheduling

User Experience

Alerts

Summary

Progress

Completion

Specify the user experience for the installation of this software on the selected devices

Specify user experience setting for this deployment

User notifications:

Display in Software Center, and only show notifications for computer restarts

When the installation deadline is reached, allow the following activities to be performed outside the maintenance window:

☐ Software Installation☐ System restart (if required to complete the installation)

Write filter handling for Windows Embedded devices

☒ Commit changes at deadline or during a maintenance window (requires restarts)

If this option is not selected, content will be applied on the overlay and committed later.

< Previous

Next >

Summary

Cancel



General

Content

Deployment Settings

Scheduling

User Experience

Alerts

Summary

Progress

Completion

Specify Configuration Manager and Operations Manager alert options

Configuration Manager generates alerts when this application is deployed.

Threshold for successful deployment

☐ Create a deployment alert when the threshold is lower than the following:

Percent success:

1

After:

02-Mar-2019

9:25 PM

Threshold for failed deployment

☐ Create a deployment alert when the threshold is higher than the following:

Percent failure:

0

Enable System Center Operations Manager maintenance mode if you want Operations Manager to generate alerts when this application is deployed.

☐ Enable System Center Operations Manager maintenance mode☐ Generate System Center Operations Manager alert when a software installation fails

< Previous

Next >

Summary

Cancel



Summary

General

Content

Deployment Settings

Scheduling

User Experience

Alerts

Summary

Progress

Completion

Confirm the settings for this new deployment

Details:

General

- Software: System Center Configuration Manager Console
- Collection: CB Console (Member Count: 2)
- Use default distribution point groups associated to this collection: Disabled
- Automatically distribute content for dependencies: Enabled

Deployment Settings

- Action: Install
- Purpose: Available
- Allow end users to attempt to repair this application: Disabled
- Allow clients to use a metered Internet connection to download content: Disabled

Application Settings (retrieved from application in software library)

- Application Name: System Center Configuration Manager Console
- Application Version: CB1810.5.1810.1075.1000
- Application Deployment Types: Windows Installer (*.msi file)

Scheduling

- Time based on: UTC
- Available Time: As soon as possible
- Deadline Time: Disabled
- Delayed enforcement on deployment: Disabled

User Experience

- User notifications: Display in Software Center, and only show notifications for computer restarts
- Ignore Maintenance Windows: Disabled
- System restart (if required to complete the installation): Disabled
- Commit changes at deadline or during a maintenance window (requires restarts): Enabled

Alerts

To change these settings, click Previous. To apply the settings, click Next.

< Previous

Next >

Summary

Cancel



Completion

General

Content

Deployment Settings

Scheduling

User Experience

Alerts

Summary

Progress

Completion



The Deploy Software Wizard completed successfully

Details:



Success: General

- Software: System Center Configuration Manager Console
- Collection: CB Console (Member Count: 2)
- Use default distribution point groups associated to this collection: Disabled
- Automatically distribute content for dependencies: Enabled



Success: Deployment Settings

- Action: Install
- Purpose: Available
- Allow end users to attempt to repair this application: Disabled
- Allow clients to use a metered Internet connection to download content: Disabled



Success: Application Settings (retrieved from application in software library)

- Application Name: System Center Configuration Manager Console
- Application Version: CB1810.5.1810.1075.1000
- Application Deployment Types: Windows Installer (*.msi file)



Success: Scheduling

- Time based on: UTC
- Available Time: As soon as possible
- Deadline Time: Disabled
- Delayed enforcement on deployment: Disabled



Success: User Experience

- User notifications: Display in Software Center, and only show notifications for computer restarts

To exit the wizard, click Close.

< Previous

Next >

Summary

Close

Now open Software Center to install the console.

Software Center


RAMLAN INC

Applications 1

- Updates
- Operating Systems
- Installation status
- Device compliance
- Options
- Personal

All Required

Filter: All Sort by: Most recent

 New

System Center Configuration M...
Microsoft
CB1810 5.1810.1075....


No items found.

Software Center

RAMLAN INC

Applications 1

Applications > Application details

 System Center Configuration Manager Console
Published by Microsoft

[Install](#)


Status: Available
Version: CB1810 5.1810.1075.1000
Date published: Not specified
Restart required: Might be required
Download size: 69 MB
Estimated time: Not specified
Total components: 1

Software Center

RAMLAN INC

Applications 1

Applications > Application details

 System Center Configuration Manager Console
Published by Microsoft

[Uninstall](#)

Status: Installed
Version: CB1810 5.1810.1075.1000
Date published: Not specified
Restart required: Might be required
Download size: 69 MB
Estimated time: Not specified
Total components: 1
Date Modified: 23-Feb-2019

Here is the log that you can monitor for success or failure of the application install.

Configuration Manager Trace Log Tool - [C:\Windows\CCM\Logs\AppEnforce.log]			
File Tools Window Help			
Log Text	Component	Date/Time	Thread
Matched exit code 0 to a Success entry in exit codes table.	AppEnforce	23-Feb-2019 11:24:20	3800 (0xED8)
Performing detection of app deployment type Adobe Acrobat Reader DC - Windows Installer (*.msi file)[Scopeld_38252C12-674B-4940-898B-AE07E9AF1FF6/Deployme...	AppEnforce	23-Feb-2019 11:24:20	3800 (0xED8)
+++ Discovered MSI application [AppDT Id: Scopeld_38252C12-674B-4940-898B-AE07E9AF1FF6/DeploymentType_c2334d63-bd02-445f-bfb9-c8fb34c04f18, Revision: 1, M...	AppEnforce	23-Feb-2019 11:24:20	3800 (0xED8)
+++++ App enforcement completed (15 seconds) for App DT "Adobe Acrobat Reader DC - Windows Installer (*.msi file)" [Scopeld_38252C12-674B-4940-898B-AE07E9A...	AppEnforce	23-Feb-2019 11:24:20	3800 (0xED8)
+++ Starting Install enforcement for App DT "System Center Configuration Manager Console - Windows Installer (*.msi file)" [Scopeld_38252C12-674B-4940-898B-AE07E9A...	AppEnforce	23-Feb-2019 9:36:53 P	3756 (0xEAC)
Performing detection of app deployment type System Center Configuration Manager Console - Windows Installer (*.msi file)[Scopeld_38252C12-674B-4940-898B-AE07...	AppEnforce	23-Feb-2019 9:36:53 P	3756 (0xEAC)
+++ Application not discovered. [AppDT Id: Scopeld_38252C12-674B-4940-898B-AE07E9AF1FF6/DeploymentType_28d6403f-30a5-4110-9c12-7639712d1d31, Revision: 2]	AppEnforce	23-Feb-2019 9:36:53 P	3756 (0xEAC)
App enforcement environment: Context: MachineCommand line: consolesetup.exe TargetDir="C:\Program Files (x86)\Microsoft Configuration Manager\AdminCons...	AppEnforce	23-Feb-2019 9:36:53 P	3756 (0xEAC)
Prepared working directory: C:\Windows\ccmcache\...	AppEnforce	23-Feb-2019 9:36:53 P	3756 (0xEAC)
Prepared command line: "C:\Windows\ccmcache\...\ConsoleSetup.exe" TargetDir="C:\Program Files (x86)\Microsoft Configuration Manager\AdminConsole" DefaultSi...	AppEnforce	23-Feb-2019 9:36:54 P	3756 (0xEAC)
Executing Command line: "C:\Windows\ccmcache\...\ConsoleSetup.exe" TargetDir="C:\Program Files (x86)\Microsoft Configuration Manager\AdminConsole" Default...	AppEnforce	23-Feb-2019 9:36:54 P	3756 (0xEAC)
Working directory C:\Windows\ccmcache\...	AppEnforce	23-Feb-2019 9:36:54 P	3756 (0xEAC)
Post install behavior is BasedOnExitCode	AppEnforce	23-Feb-2019 9:36:54 P	3756 (0xEAC)
Waiting for process 3388 to finish. Timeout = 120 minutes.	AppEnforce	23-Feb-2019 9:36:54 P	3756 (0xEAC)
Process 3388 terminated with exitcode: 0	AppEnforce	23-Feb-2019 9:37:42 P	3756 (0xEAC)
Looking for exit code 0 in exit codes table.	AppEnforce	23-Feb-2019 9:37:42 P	3756 (0xEAC)
Matched exit code 0 to a Success entry in exit codes table.	AppEnforce	23-Feb-2019 9:37:42 P	3756 (0xEAC)
Performing detection of app deployment type System Center Configuration Manager Console - Windows Installer (*.msi file)[Scopeld_38252C12-674B-4940-898B-AE07...	AppEnforce	23-Feb-2019 9:37:42 P	3756 (0xEAC)
+++ Discovered application [AppDT Id: Scopeld_38252C12-674B-4940-898B-AE07E9AF1FF6/DeploymentType_28d6403f-30a5-4110-9c12-7639712d1d31, Revision: 2]	AppEnforce	23-Feb-2019 9:37:42 P	3756 (0xEAC)
+++++ App enforcement completed (49 seconds) for App DT "System Center Configuration Manager Console - Windows Installer (*.msi file)" [Scopeld_38252C12-674...	AppEnforce	23-Feb-2019 9:37:42 P	3756 (0xEAC)
Date/Time: 23-Feb-2019 9:37:42 PM Component: AppEnforce			
Thread: 3756 (0xEAC) Source: appexcnlib.cpp:2011			
Process 3388 terminated with exitcode: 0			
Elapsed time is 830h 2m 43s 548ms (2988163.548 seconds)			

This concludes the process of creating an application for configuration manager console and deploying to workstations.

Thanks

Ram Lan

23rd Feb 2019