

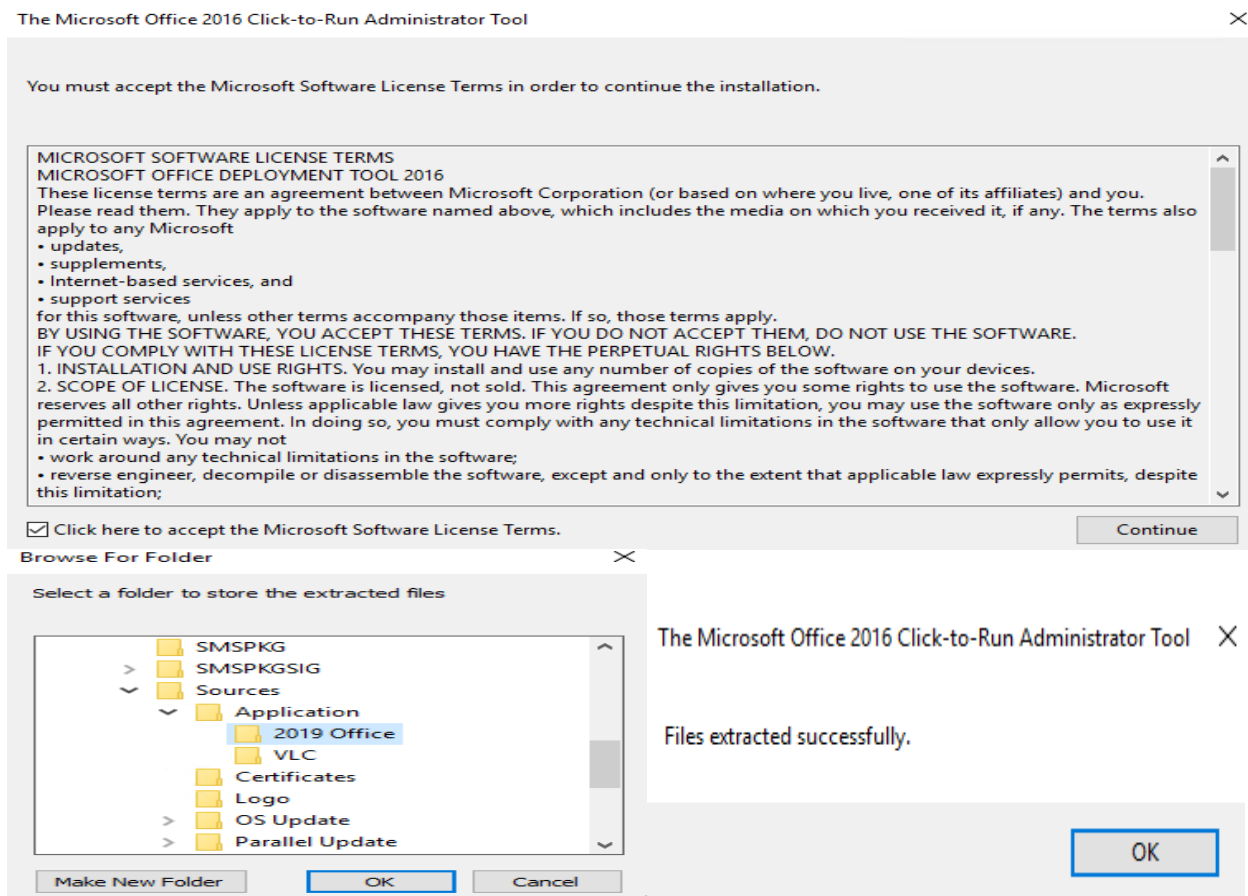
Office 2019 Click to Run Deployment through Current Branch 1806

In this post, I will show you how to deploy Office 2019 CTR within CB1806. In my lab, I am running App-v Office 2013. I am going to install Office 2019 as well. So in the end will have Office 2013 and 2019.



First download ODT from Microsoft site - <https://www.microsoft.com/en-us/download/details.aspx?id=49117> & extract files to a folder. I have created a folder called 2019 Office.

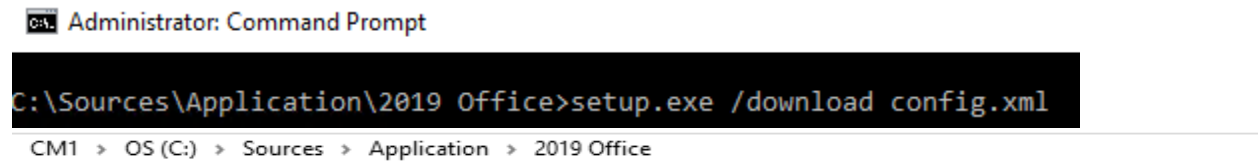
I am going to run officedeploymenttool.exe and extract the files to above folder.



Delete all XML files and create a new xml file called config.xml with the following.

```
<Configuration>
<Add OfficeClientEdition="64" Channel="PerpetualVL2019" >
<Product ID="ProPlus2019Volume" PIDKEY="NMMKJ-6RK4F-KMJVX-8D9MJ-6MWKP">
<Language ID="en-us" />
</Product>
<Product ID="ProjectPro2019Volume" PIDKEY="B4NPR-3FKK7-T2MBV-FRQ4W-PKD2B">
<Language ID="en-us" />
</Product>
<Product ID="VisioPro2019Volume" PIDKEY="9BGNQ-K37YR-RQHF2-38RQ3-7VCBB">
<Language ID="en-us" />
</Product>
</Add>
</Configuration>
```

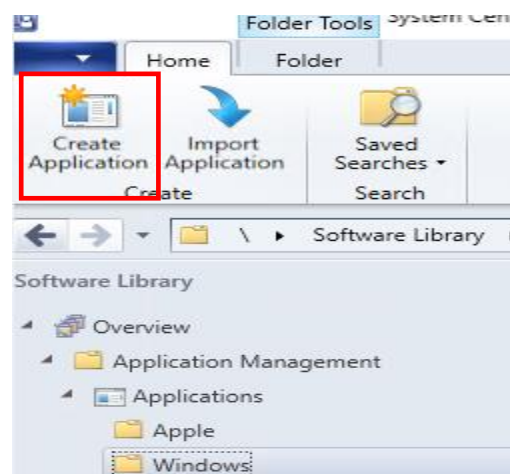
Open Command Prompt as Administrator and run this command **Setup.exe /download config.xml**.



Name	Date modified	Type	Size
Office	06-Nov-2018 4:35 ...	File folder	
config.xml	06-Nov-2018 4:34 ...	XML Document	1 KB
setup.exe	23-Oct-2018 9:48 ...	Application	5,003 KB

Wait for the download to complete. It might take a while since the file size is large (3GB). Once the download is done you will see various sub folder and files.

Now we can create application package as detailed below:





General

General

General Information
Application Catalog
Deployment Types
Summary
Progress
Completion

Specify settings for this application

Applications contain software that you can deploy to users and devices in your Configuration Manager environment. Applications can contain multiple deployment types that customize the installation behavior of the application.

☐ Automatically detect information about this application from installation files:

Type: Windows Installer (*.msi file) ▾

Location:

Browse...

Example: \\Server\Share\File

☒ Manually specify the application information

< Previous

Next >

Summary

Cancel



General Information

General

General Information
Application Catalog
Deployment Types
Summary
Progress
Completion

Specify information about this application

Name: Office 2019

Administrator comments:

Publisher: Microsoft Software version:

Optional reference:

Administrative categories: Select...

☐ Date published: 01-Nov-2018

Specify the administrative users who are responsible for this application.

Owners: ADMINISTRATOR Browse...

Support contacts: ADMINISTRATOR Browse...

< Previous

Next >

Summary

Cancel



Application Catalog

General

General Information

Application Catalog

Deployment Types

Summary

Progress

Completion

Specify the Configuration Manager Application Catalog entry

Specify information about how you want to display this application to users when they browse the Application Catalog. To provide information in a specific language, select the language before you enter a description.

Selected language:

English (Canada) default

Add/Remove...

Localized application name:

Office 2019

User categories:

Edit...

User documentation:

Browse...

Link text:

Privacy URL:

Localized description:

Keywords:

Icon:



Browse...

☐ Display this as a featured app and highlight it in the company portal

< Previous

Next >

Summary

Cancel



Deployment Types

General

General Information

Application Catalog

Deployment Types

Summary

Progress

Completion

Configure deployment types and the priority in which they will be applied for this application

Deployment types include information about the installation method and the source files for this application.

Deployment types:

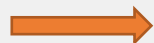
Increase Priority

Decrease Priority

Filter...

Priority	Name	Type	Languages
----------	------	------	-----------

There are no items to show in this view.



Add...

Edit...

Copy

Delete

< Previous

Next >

Summary

Cancel



General

General

- General Information
- Content
- Detection Method
- User Experience
- Requirements
- Dependencies
- Summary
- Progress
- Completion

Specify settings for this deployment type

Deployment types include information about the installation method and source files for this application.

Type: Script Installer

☐ Automatically identify information about this deployment type from installation files

Location: Browse...
Example: \\Server\Share\File

☒ Manually specify the deployment type information

< PreviousNext >SummaryCancel

General Information

General

- General Information
- Content
- Detection Method
- User Experience
- Requirements
- Dependencies
- Summary
- Progress
- Completion

Specify general information for this deployment type

Applications can have any number of deployment types. Deployment types include links to content and settings that specify how the content is delivered.

Name:

Administrator comments:

Languages: English,French Select...

< PreviousNext >SummaryCancel

setup.exe /configure config.xml

Create Deployment Type Wizard



Content

General

General Information

Content

Detection Method

User Experience

Requirements

Dependencies

Summary

Progress

Completion

Specify information about the content to be delivered to target devices

Specify the location of the deployment type's content and other settings that control how content is delivered to target devices. All the contents in the path specified will be delivered.

Content location: \\cm1\Sources\Application\2019 Office

Browse...

☐ Persist content in the client cache

Specify the command used to install this content.

Installation program: setup.exe

Browse...

Installation start in:

Configuration Manager can remove installations of this content if an uninstall program is specified below.

Uninstall program:

Browse...

Uninstall start in:

☐ Run installation and uninstall program as 32-bit process on 64-bit clients.

< Previous

Next >

Summary

Cancel

Create Deployment Type Wizard



Detection Method

General

General Information

Content

Detection Method

User Experience

Requirements

Dependencies

Summary

Progress

Completion

Specify how this deployment type is detected

Specify how Configuration Manager determines whether this deployment type is already present on a device. This detection occurs before the content is installed or when software inventory data is collected.

☒ Configure rules to detect the presence of this deployment type:

Connector	(Clause)

Add Clause...

Edit Clause...

Delete Clause



Group

Ungroup

Edit...

☐ Use a custom script to detect the presence of this deployment type:

Script type:

Script length:

< Previous

Next >

Summary

Cancel

Detection Rule

Create a rule that indicates the presence of this application.

Setting Type: Registry

Specify the registry key or value to detect this application.

Hive: HKEY_LOCAL_MACHINE

Browse...

Key: SOFTWARE\Microsoft\Office\ClickToRun\Configuration

Value:

☒ Use (Default) registry key value for detection

☒ This registry key is associated with a 32-bit application on 64-bit systems

Data Type: String

☒ This registry setting must exist on the target system to indicate presence of this application

☐ This registry setting must satisfy the following rule to indicate the presence of this application

Operator: Equals

Value:

OK

Cancel

Create Deployment Type Wizard



Detection Method

General

General Information

Content

Detection Method

User Experience

Requirements

Dependencies

Summary

Progress

Completion

Specify how this deployment type is detected

Specify how Configuration Manager determines whether this deployment type is already present on a device. This detection occurs before the content is installed or when software inventory data is collected.

☒ Configure rules to detect the presence of this deployment type:

	Connector	(Clause)
▶			LocalMachine\SOFTWARE\Microsoft\Office\Click...	

Add Clause...

Edit Clause...

Delete Clause

Group

Ungroup

☐ Use a custom script to detect the presence of this deployment type:

Script type:

Script length:

Edit...

< Previous

Next >

Summary

Cancel



User Experience

General

General Information

Content

Detection Method

User Experience

Requirements

Dependencies

Summary

Progress

Completion

Specify user experience settings for the application

Installation behavior:

Logon requirement:

Installation program visibility:

☐ Allow users to view and interact with the program installation

Specify the maximum run time and estimated installation time of the deployment program for this application. The estimated installation time displays to the user when the application installs.

Maximum allowed run time (minutes):

Estimated installation time (minutes):

< Previous

Next >

Summary

Cancel



Requirements

General

General Information

Content

Detection Method

User Experience

Requirements

Dependencies

Summary

Progress

Completion

Specify installation requirements for this deployment type

Specify any requirements, such as hardware features or the operating system version, that devices must have before they can install this deployment type. Configuration Manager verifies that these requirements are met before content is deployed to the device.

Requirements:

Filter...		
Requirement Type	Operator	Values
Operating system	One of	{All Windows 7 (64-bit), All Windows 8 (64-bit), All Windows 8.1 (64-bit), All Windows

Add...

Edit...

Delete

< Previous

Next >

Summary

Cancel



Dependencies

General

- General Information
- Content
- Detection Method
- User Experience
- Requirements
- Dependencies**
- Summary
- Progress
- Completion

Specify software dependencies for this deployment type

Software dependencies are deployment types that must be installed before this deployment type can be installed.

Software dependencies:

	Name	Application	Deployment Type	Automatically Install	

Add...

Edit...

Delete

< Previous

Next >

Summary

Cancel



Summary

General

- General Information
- Content
- Detection Method
- User Experience
- Requirements
- Dependencies
- Summary**
- Progress
- Completion

Confirm the settings for this deployment type

Details:

General Information:

- Name: Office 2018
- Technology: Script Installer
- Administrator comments:
- Languages: English,French

Content:

- Content location: \\cm1\Sources\Application\2019 Office
- Persist in client cache: No
- Installation program: [REDACTED]
- Installation start in:

Detection Method:

User Experience:

- Installation behavior: Install for system
- Login requirement: Whether or not a user is logged on
- Installation priority: Normal
- Allow users to interact with this program: No
- Maximum allowed run time (minutes): 120
- Estimated install time (minutes): 40

Requirements:

- Operating system: One of {All Windows 7 (64-bit), All Windows 8 (64-bit), All Windows 8.1 (64-bit), All Windows 10 (64-bit), All Windows Server 2016 (64-bit)}

Dependencies:

To change these settings, click Previous. To apply the settings, click Next.

< Previous

Next >

Summary

Cancel



Completion

General

General Information
Content
Detection Method
User Experience
Requirements
Dependencies

Summary

Progress

Completion



The Create Deployment Type Wizard completed successfully

Details:

- Name: Office 2018
- Technology: Script Installer
- Administrator comments:
- Languages: English,French



Success: Content:

- Content location: \\com1\Sources\Application\2019 Office
- Persist in client cache: No
- Installation program: Setup.exe /configure configuration-Office365-x64.xml
- Installation start in:



Success: Detection Method:



Success: User Experience:

- Installation behavior: Install for system
- Login requirement: Whether or not a user is logged on
- Installation priority: Normal
- Allow users to interact with this program: No
- Maximum allowed run time (minutes): 120
- Estimated install time (minutes): 40



Success: Requirements:

- Operating system: One of {All Windows 7 (64-bit), All Windows 8 (64-bit), All Windows 8.1 (64-bit), All Windows 10 (64-bit), All Windows Server 2016 (64-bit)}



Success: Dependencies:

To exit the wizard, click Close.

< Previous

Next >

Summary

Close



Deployment Types

General

General Information
Application Catalog

Deployment Types

Summary

Progress

Completion

Configure deployment types and the priority in which they will be applied for this application

Deployment types include information about the installation method and the source files for this application.

Deployment types:

Increase Priority

Decrease Priority

Filter...

Priority	Name	Type	Languages
1	Office 2018	Script	English,French

Add...

Edit...

Copy

Delete

< Previous

Next >

Summary

Cancel



Summary

General

- General Information
- Application Catalog
- Deployment Types

Summary

- Progress
- Completion

Confirm the settings for this application

Details:

- General Information:
- Application name: Office 2019
 - Administrator comments:
 - Publisher: Microsoft
 - Software version:
 - Optional reference:

Categories:

- Owners:
- ADMINISTRATOR

- Support contacts:
- ADMINISTRATOR

- Application Catalog entries specified for the following languages:
- en-CA

- Deployment type names:
- Office 2018

To change these settings, click Previous. To apply the settings, click Next.

< Previous

Next >

Summary

Cancel



Completion

General

- General Information
- Application Catalog
- Deployment Types

Summary

- Progress
- Completion



The Create Application Wizard completed successfully

Details:

- ✓ Success: General Information:
 - Application name: Office 2019
 - Administrator comments:
 - Publisher: Microsoft
 - Software version:
 - Optional reference:
- ✓ Success: Categories:
- ✓ Success: Owners:
 - ADMINISTRATOR
- ✓ Success: Support contacts:
 - ADMINISTRATOR
- ✓ Success: Application Catalog entries specified for the following languages:
 - en-CA
- ✓ Success: Deployment type names:
 - Office 2018

To exit the wizard, click Close.

< Previous

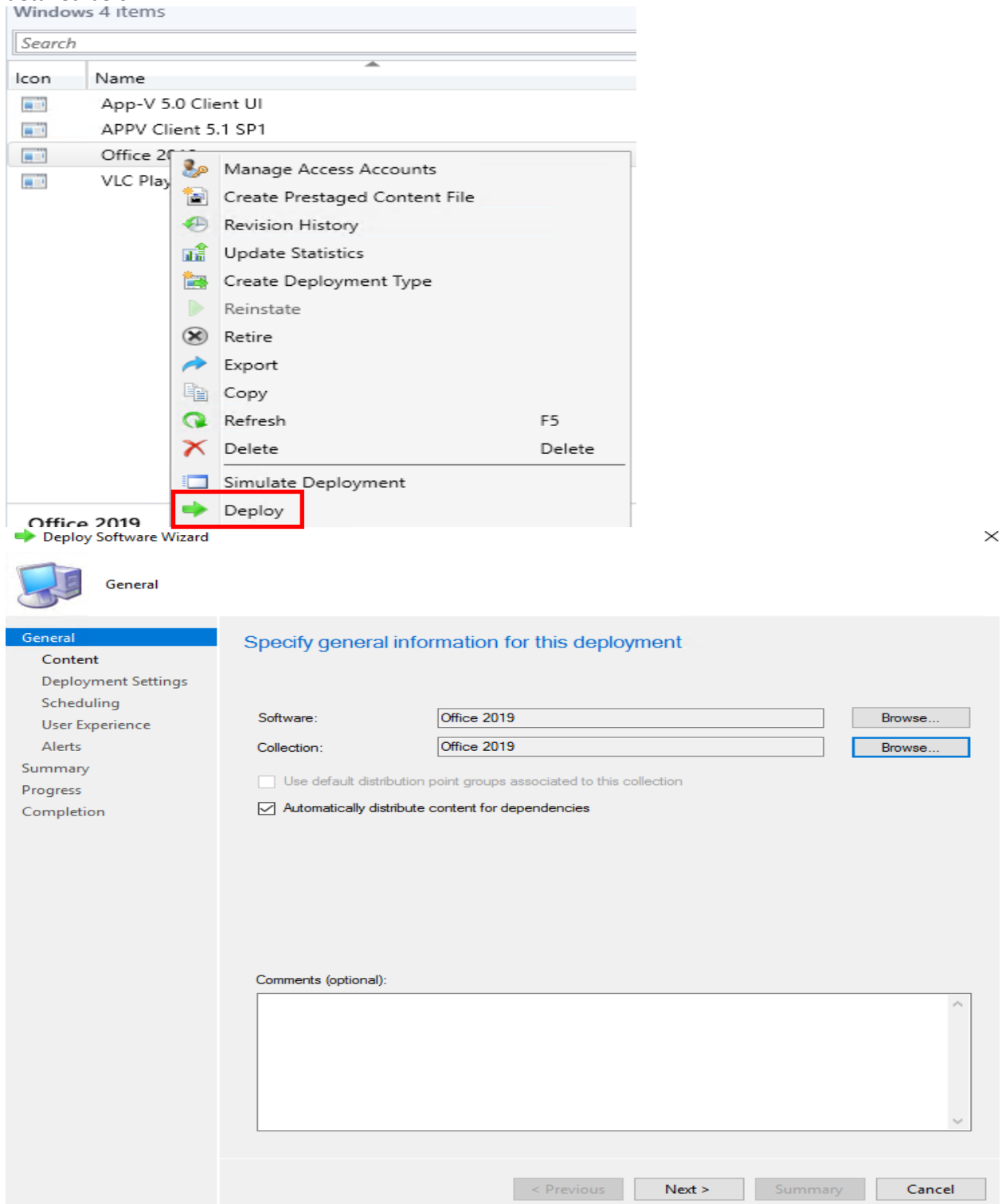
Next >

Summary

Close

Now we have to create a device collection for Office 2019 deployment. I created a device collection called Office 2019 with direct rule and added Win 10, Win 8 and Win 7 workstations.

Now we are ready to distribute and deploy Office 2019 application package to Office 2019 collection as detailed below:





Content

General

Content

Deployment Settings

Scheduling

User Experience

Alerts

Summary

Progress

Completion

Specify the content destination

Distribution points or distribution point groups that the content has been distributed to:

Name	Type
There are no items to show in this view.	

Additional distribution points, distribution point groups, and the distribution point groups that are currently associated with collections to distribute content to:

Filter...			Add
Name	Description	Associations	Remove
All DP in Lab	Distribution point group	0	

< Previous

Next >

Summary

Cancel



Deployment Settings

General

Content

Deployment Settings

Scheduling

User Experience

Alerts

Summary

Progress

Completion

Specify settings to control how this software is deployed

Action: Install

Purpose: Available

☐ An administrator must approve a request for this application on the device

< Previous

Next >

Summary

Cancel



Scheduling

General

Content

Deployment Settings

Scheduling

User Experience

Alerts

Summary

Progress

Completion

Specify the schedule for this deployment

This application will be available as soon as possible by default. If this application should be made available at a different time, change the availability time to the desired UTC time.

Time based on:

UTC

☐ Schedule the application to be available at:

01-Nov-2018



9:30 PM



< Previous

Next >

Summary

Cancel



User Experience

General

Content

Deployment Settings

Scheduling

User Experience

Alerts

Summary

Progress

Completion

Specify the user experience for the installation of this software on the selected devices

Specify user experience setting for this deployment

User notifications:

Display in Software Center, and only show notifications for computer restarts

When the installation deadline is reached, allow the following activities to be performed outside the maintenance window:

☐ Software Installation☐ System restart (if required to complete the installation)

Write filter handling for Windows Embedded devices

☒ Commit changes at deadline or during a maintenance window (requires restarts)

If this option is not selected, content will be applied on the overlay and committed later.

< Previous

Next >

Summary

Cancel



Alerts

General

Content
Deployment Settings
Scheduling
User Experience

Alerts

Summary
Progress
Completion

Specify Configuration Manager and Operations Manager alert options

Configuration Manager generates alerts when this application is deployed.

Threshold for successful deployment

☐ Create a deployment alert when the threshold is lower than the following:

Percent success:
After:

Threshold for failed deployment

☐ Create a deployment alert when the threshold is higher than the following:

Percent failure:

Enable System Center Operations Manager maintenance mode if you want Operations Manager to generate alerts when this application is deployed.

- ☐ Enable System Center Operations Manager maintenance mode
- ☒ Generate System Center Operations Manager alert when a software installation fails

< Previous

Next >

Summary

Cancel



Summary

General

Content
Deployment Settings
Scheduling
User Experience
Alerts

Summary

Progress
Completion

Confirm the settings for this new deployment

Details:

General

- Software: Office 2019
- Collection: Office 2019 (Member Count: 0)
- Use default distribution point groups associated to this collection: Disabled
- Automatically distribute content for dependencies: Enabled

Deployment Settings

- Action: Install
- Purpose: Available
- Allow end users to attempt to repair this application: Disabled
- Allow clients to use a metered Internet connection to download content: Disabled

Application Settings (retrieved from application in software library)

- Application Name: Office 2019
- Application Version:
- Application Deployment Types: Script Installer

Scheduling

- Time based on: UTC
- Available Time: As soon as possible
- Deadline Time: Disabled
- Delayed enforcement on deployment: Disabled

User Experience

- User notifications: Display in Software Center, and only show notifications for computer restarts
- Ignore Maintenance Windows: Disabled
- System restart (if required to complete the installation): Disabled
- Commit changes at deadline or during a maintenance window (requires restarts): Enabled

Alerts

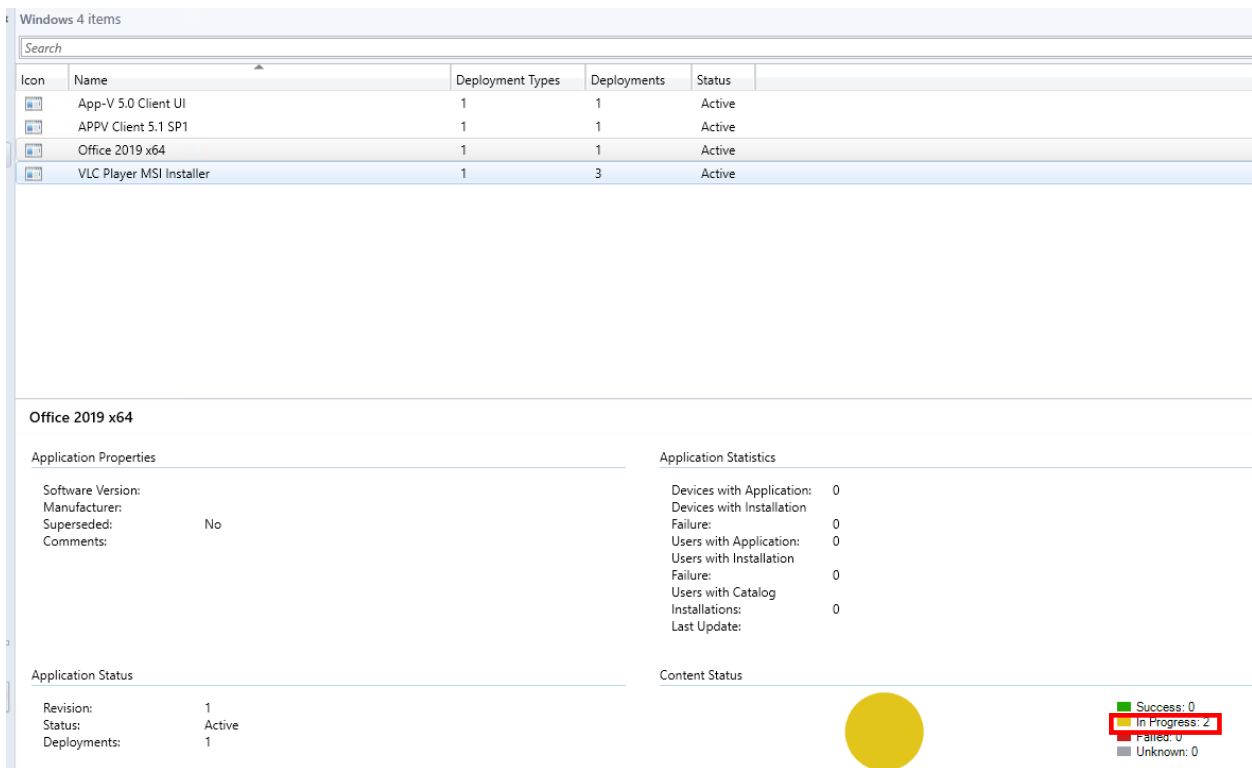
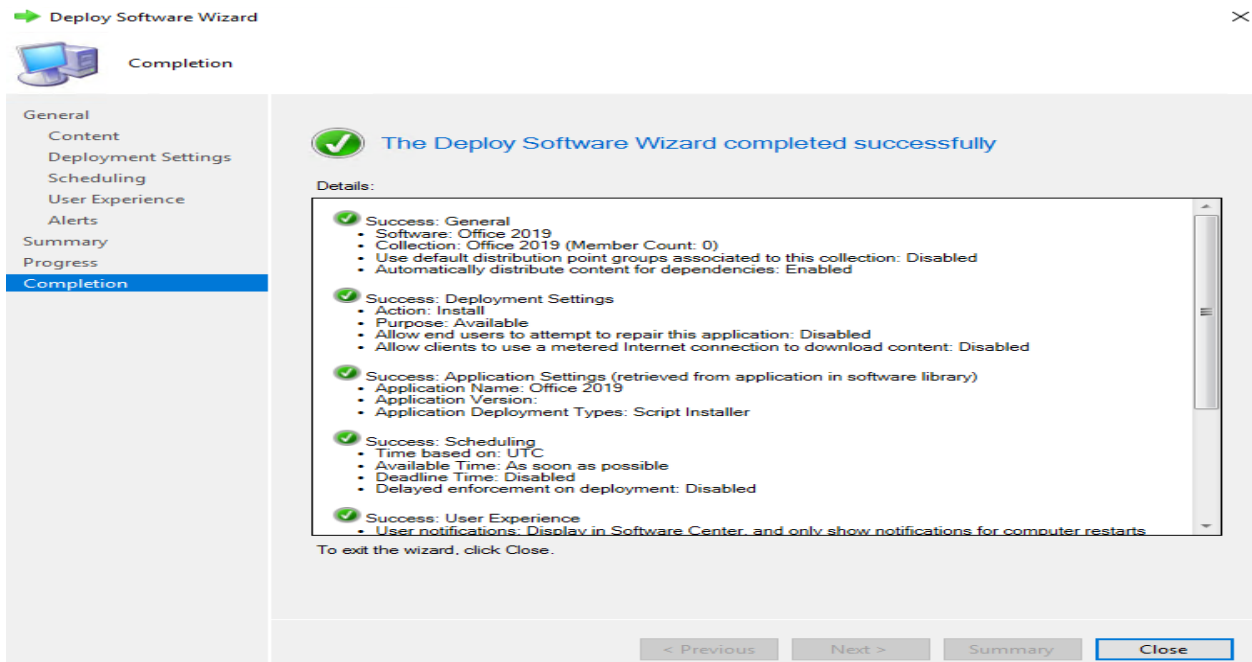
To change these settings, click Previous. To apply the settings, click Next.

< Previous

Next >

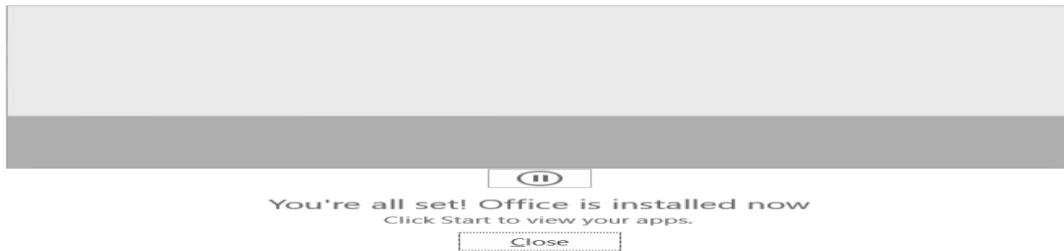
Summary

Cancel

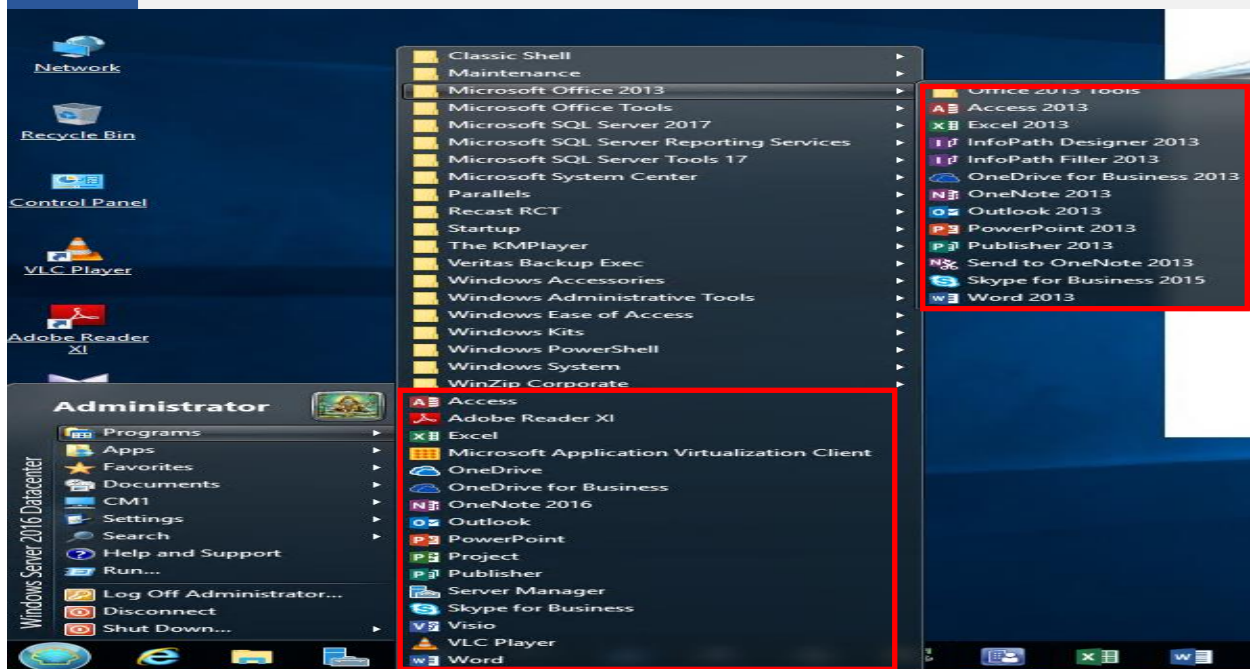
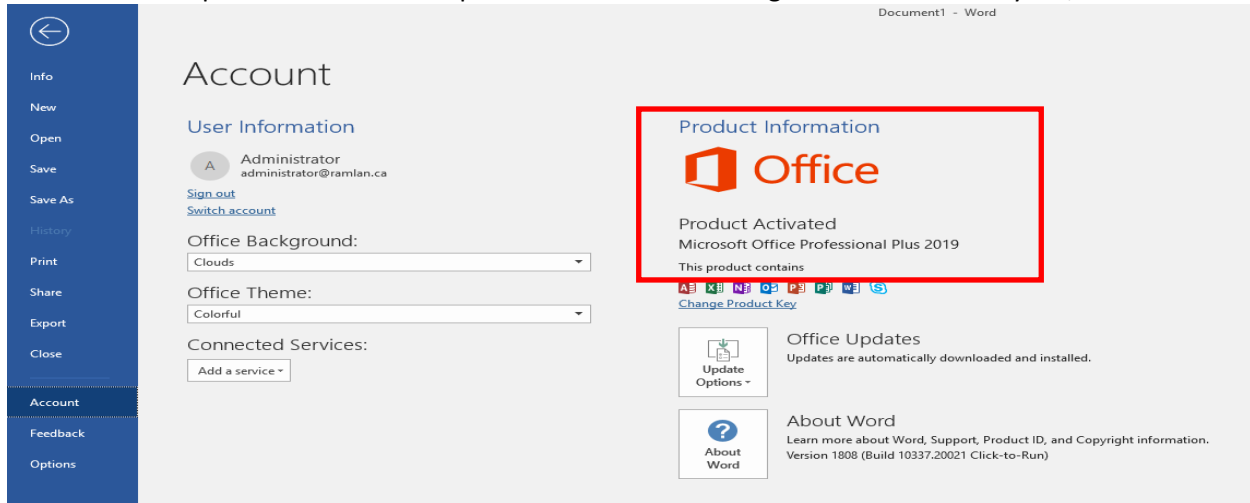


You will see Office 2019 in Software Center. Select Office 2019 and click install. The install process will start in the background and on the task bar you will see a small icon of Office 2019. After few minutes you will see the following screen shot.

Office



Click close and open Word 2019. The product is activated through KMS server. In my lab, I have KMS.



This concludes Office 2019 install and configuration.

Thanks

Ram Lan

6th Nov 2018