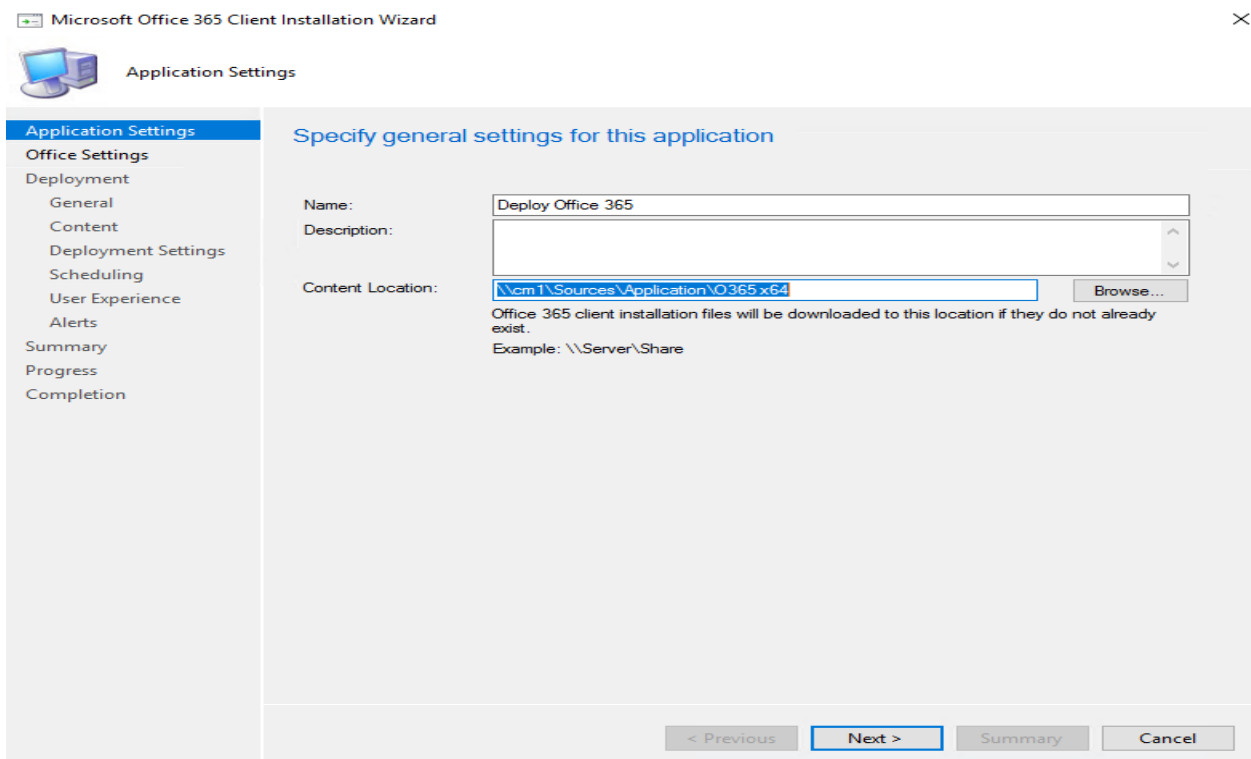
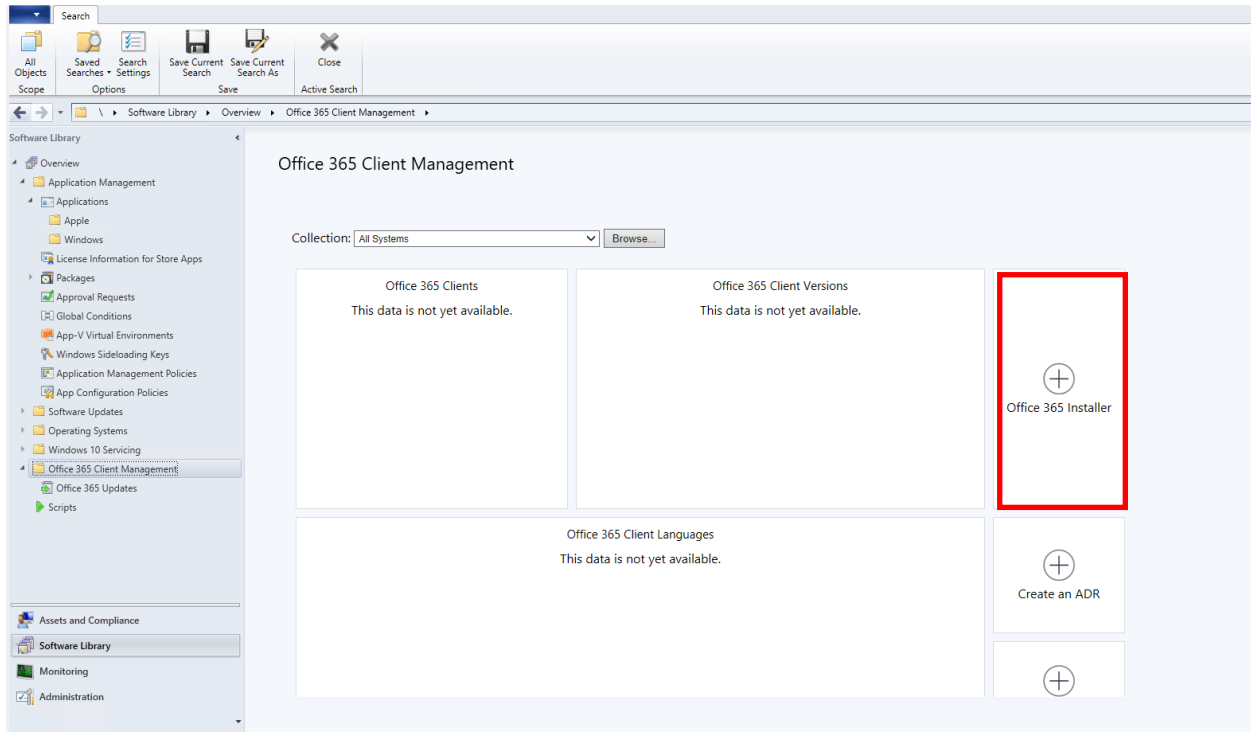
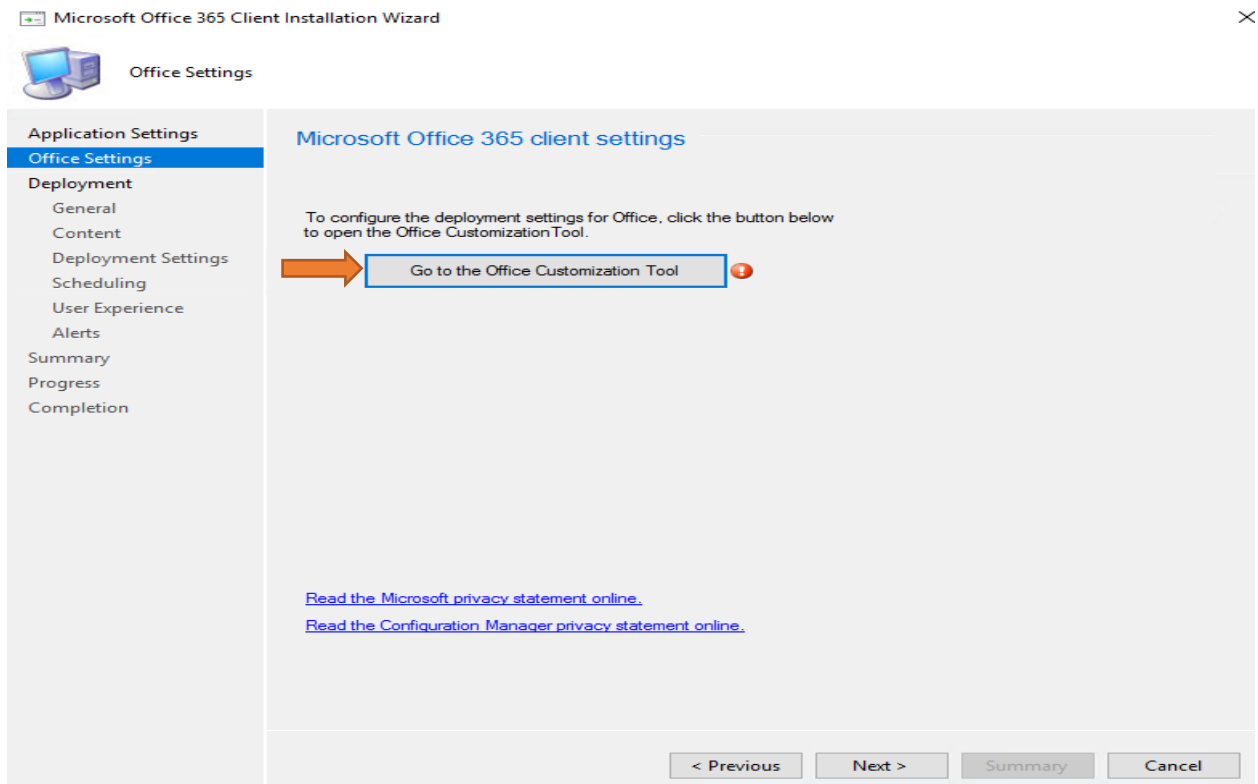


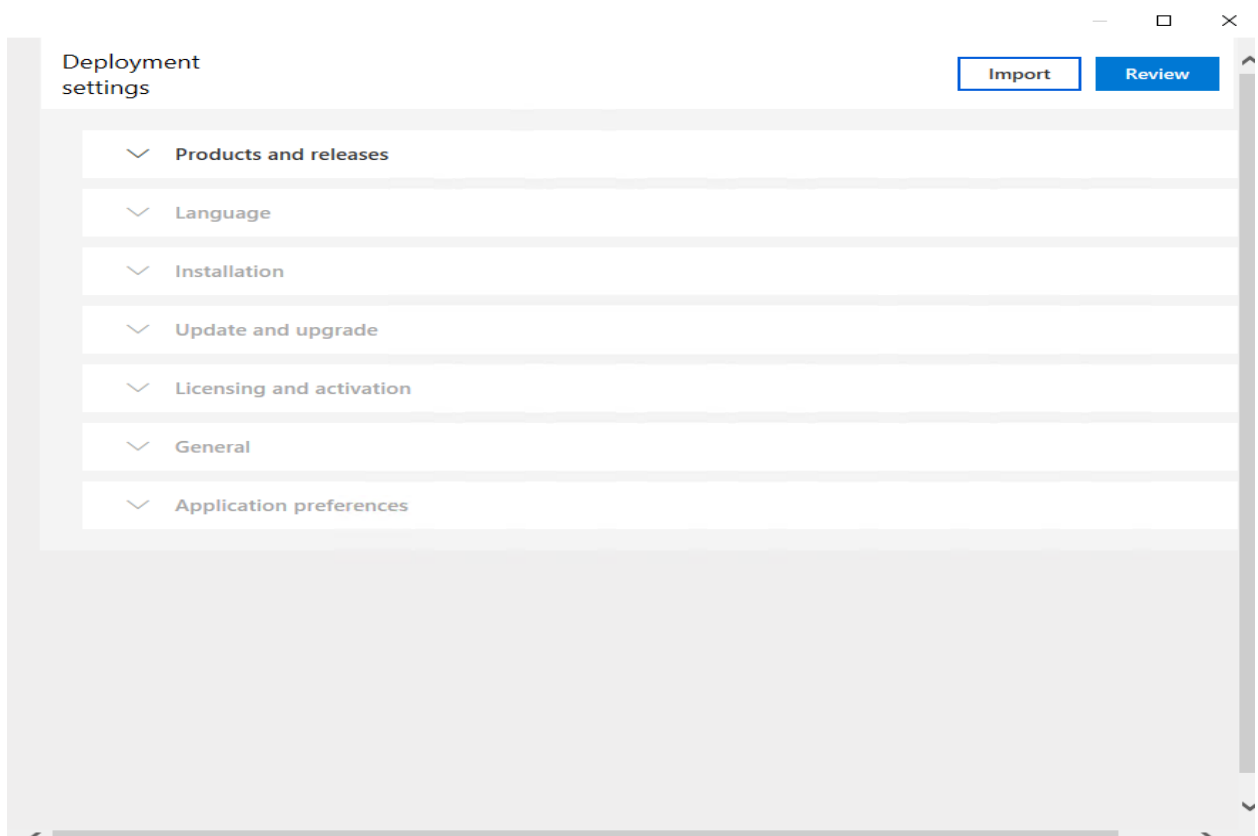
## How to deploy Office 365 using Current Branch 1806

In this post, I will show you how to deploy O365 ProPlus through CB1806. Go to Software Library – Office 365 Client Management





When you click OCT – You will get below screen to configure various settings.



^ Products and releases

Architecture

Which architecture do you want to deploy?

☐ 32-bit

☒ 64-bit

Products\*

Which products and apps do you want to deploy?

Office 365 ProPlus

Add

Turn apps on or off to include or exclude them from being deployed

Access ☒ On

Excel ☒ On

OneDrive (Groove) ☒ On

OneDrive Desktop ☒ On

OneNote 2016 ☐ Off

Outlook ☒ On

PowerPoint ☒ On

Publisher ☒ On

Skype for Business ☒ On

Word ☒ On

Update Channel

Select the update channel, which controls the timing of feature updates [Learn more](#)

Semi-Annual Channel

Which version do you want to deploy? [Learn more](#)

1803 9126.2295

Next

## ^ Language

### Languages

Select primary language\*

English (United States)



Select additional languages

Select additional languages

Update

Next

## ^ Installation

### Installation options

Pin icons to Taskbar ☒ On

Logging ☒ On

Save log file to \\CM1\Sources\Application\O365 x64\Log



Next

### Upgrade options

Uninstall any MSI versions of Office, including Visio and Project [Learn more](#)

☒ On

Remove Visio ☒ On

Remove Project ☒ On


Remove SharePoint Designer ☒ On

Remove InfoPath ☒ On

Next

## Product key

---

 Product key settings only apply to volume licensed products and suites


☒ KMS Client Key

Product key entry is not required for Key Management Service (KMS) activation.

☐ Multiple activation Key

Multiple activation key (MAK). Type a valid 25 character volume license key with no spaces.

Autoactivate ☐ Off

Automatically accept the EULA  ☐ Off

Shared computer activation ☐ Off

☐ Allow the licensing token to roam

Network, local, or HTTP path

Next

## General

---

Provide your organization name to set the Company property on Office documents

INFOTECHRAM INC

Provide a description for this configuration for documentation purposes

This will install O365 x64 for w/s|

Next

Here you get various options to choose for each app – see screen shot for example..

Application preferences

Press enter to search

Show only: 

Office

Access

Excel

OneNote

Outlook

PowerPoint

Publisher

Project

Visio

Word

App	Setting	Status
Office	Hide the Learn more about SharePoint Hyperlink	
Office	SharePoint Product Name	
Office	Change destination URL for SharePoint hyperlink	
Office	Show Screen Tips	
Office	Print ticket safe mode	
Office	Large icons	

Finish

Deployment settings

Import

Review

Products and releases

Language

Installation

Update and upgrade

Licensing and activation

General

Application preferences

## Configured settings

### General

Provide your organization name to set the Company property on Office documents

INFOTECHRAM INC

Provide a description for this configuration for documentation purposes

This will install O365 x64...

### Products

Office 365 ProPlus

×

Excluded Applications:

OneNote 2016

×

Architecture

64-bit

### Languages

English (United States) --Primary

Full

×

### Installation options

Update channel

Semi-Annual Channel

Version to deploy

1803 9126.2295

Show installation to user

Full

Pin icons to Taskbar

On

Logging

Standard

Logging path

\\CM1\Sources\Applicati...

×

### Update and upgrade options

Enable COM management

On

Remove MSI products

On

### Licensing and activation

Product key

User Activation

Accept EULA

Off

Shared computer activation

Off




Submit

Reset

Dismiss

Microsoft Office 365 Client Installation Wizard



Office Settings

Application Settings

Office Settings

Deployment

Summary

Progress

Completion

Microsoft Office 365 client settings

To configure the deployment settings for Office, click the button below to open the Office Customization Tool.

Go to the Office Customization Tool

[Read the Microsoft privacy statement online.](#)

[Read the Configuration Manager privacy statement online.](#)


< Previous

Next >

Summary

Cancel

Microsoft Office 365 Client Installation Wizard



Deployment

Application Settings

Office Settings

Deployment

Summary

Progress

Completion

Deploy application now?

Do you want to deploy the application now?

☐ Yes

☒ No

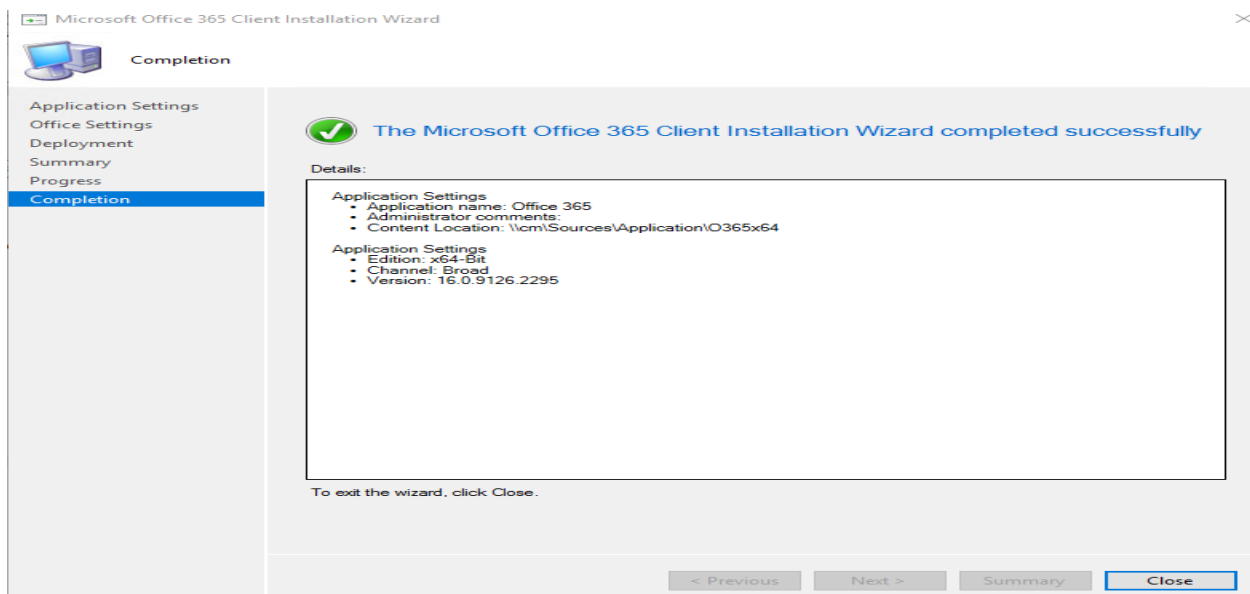
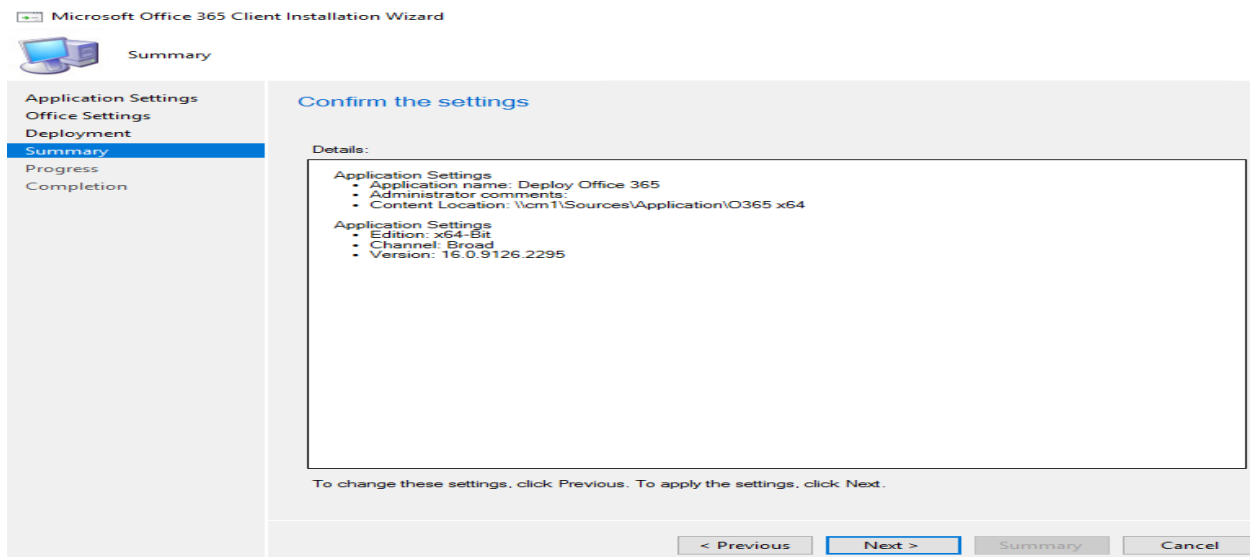
< Previous

Next >

Summary

Cancel





At the network location is where the setup files are downloaded directly from Microsoft site.

Network > cm > sources > application > O365x64

Name	Date modified	Type	Size
office	08-Nov-2018 9:41 ...	File folder	
configuration.xml	08-Nov-2018 9:41 ...	XML Document	1 KB
setup.exe	08-Nov-2018 9:47 ...	Application	5,003 KB
WIN7-20181108-1101.log	08-Nov-2018 11:0...	LOG File	197 KB

Now we have Office 365 under Applications. Before we deploy to a collection, I had to create one for Office 365 and include Win 7 and Win 7 workstations for testing.

The screenshot shows the Microsoft Intune console interface. The left-hand navigation pane includes sections for 'Software Library' (Overview, Application Management, Applications, License Information for Store Apps, Packages, Approval Requests, Global Conditions, App-V Virtual Environments, Windows Sideloading Keys, Application Management Policies, App Configuration Policies), 'Software Updates', 'Operating Systems', 'Windows 10 Servicing', 'Office 365 Client Management' (Office 365 Updates, Scripts), 'Assets and Compliance', 'Software Library', 'Monitoring', and 'Administration'. The main area is titled 'Applications 1 items' and contains a table with the following data:

Icon	Name	Deployment Types	Deployments	Status
	Office 365	1	0	Active

Below the table, the 'Office 365' application details are shown. The 'Application Properties' section includes: Software Version, Manufacturer (No), Superseded, and Comments. The 'Application Status' section shows: Revision (1), Status (Active), and Deployments (0). The 'Application Statistics' section lists: Devices with Application, Devices with Installation, Failure, Users with Application, Users with Installation, Failure, Users with Catalog, and Installations. The 'Content Status' section shows a progress indicator with a legend: Success: 0, In Progress: 0, Failed: 0, Unknown: 0.

This screenshot shows the 'Office 365' application in the Intune console with a context menu open over it. The menu includes the following options:

- Manage Access Accounts
- Create Prestaged Content File
- Revision History
- Update Statistics
- Create Deployment Type
- Reinstate
- Retire
- Export
- Copy
- Refresh
- Delete
- Simulate Deployment
- Deploy (highlighted with an orange arrow)
- Create Phased Deployment
- Distribute Content
- Move
- Set Security Scopes
- Categorize
- View Relationships
- Properties
- Recast RCT

The 'Office 365' application details are visible in the background, showing the 'Application Properties' section with fields for Software Version, Manufacturer, Superseded, and Comments.



## General

## General

## Content

Deployment Settings

Scheduling

User Experience

Alerts

Summary

Progress

Completion

## Specify general information for this deployment

Software:

Office 365

Browse...

Collection:

Office 365

Browse...

☐ Use default distribution point groups associated to this collection☒ Automatically distribute content for dependencies

Comments (optional):

&lt; Previous

Next &gt;

Summary

Cancel



## Content

## General

## Content

Deployment Settings

Scheduling

User Experience

Alerts

Summary

Progress

Completion

## Specify the content destination

Distribution points or distribution point groups that the content has been distributed to:

Name	Type
There are no items to show in this view.	

Additional distribution points, distribution point groups, and the distribution point groups that are currently associated with collections to distribute content to:

Filter...			Add ▼
Name	Description	Associations	Remove
All DP in Lab	Distribution point group	0	

&lt; Previous

Next &gt;

Summary

Cancel



## Deployment Settings

General

Content

Deployment Settings

Scheduling

User Experience

Alerts

Summary

Progress

Completion

## Specify settings to control how this software is deployed

Action:

Install

Purpose:

Available

☐ An administrator must approve a request for this application on the device

&lt; Previous

Next &gt;

Summary

Cancel



## Scheduling

General

Content

Deployment Settings

Scheduling

User Experience

Alerts

Summary

Progress

Completion

## Specify the schedule for this deployment

This application will be available as soon as possible by default. If this application should be made available at a different time, change the availability time to the desired UTC time.

Time based on:

UTC

☐ Schedule the application to be available at:

08-Nov-2018



3:24 PM



&lt; Previous

Next &gt;

Summary

Cancel



## User Experience

## General

Content

Deployment Settings

Scheduling

User Experience

Alerts

## Summary

Progress

Completion

## Specify the user experience for the installation of this software on the selected devices

Specify user experience setting for this deployment

User notifications:

Display in Software Center, and only show notifications for computer restarts

When the installation deadline is reached, allow the following activities to be performed outside the maintenance window:

☐ Software Installation☐ System restart (if required to complete the installation)

Write filter handling for Windows Embedded devices

☒ Commit changes at deadline or during a maintenance window (requires restarts)

If this option is not selected, content will be applied on the overlay and committed later.

&lt; Previous

Next &gt;

Summary

Cancel



## Alerts

## General

Content

Deployment Settings

Scheduling

User Experience

Alerts

## Summary

Progress

Completion

## Specify Configuration Manager and Operations Manager alert options

Configuration Manager generates alerts when this application is deployed.

Threshold for successful deployment

☐ Create a deployment alert when the threshold is lower than the following:

Percent success:

1

After:

15-Nov-2018

10:24 AM

Threshold for failed deployment

☐ Create a deployment alert when the threshold is higher than the following:

Percent failure:

0

Enable System Center Operations Manager maintenance mode if you want Operations Manager to generate alerts when this application is deployed.

☐ Enable System Center Operations Manager maintenance mode☒ Generate System Center Operations Manager alert when a software installation fails

&lt; Previous

Next &gt;

Summary

Cancel



## Summary

### General

Content

Deployment Settings

Scheduling

User Experience

Alerts

Summary

Progress

Completion

## Confirm the settings for this new deployment

### Details:

#### General

- Software: Office 365
- Collection: Office 365 (Member Count: 2)
- Use default distribution point groups associated to this collection: Disabled
- Automatically distribute content for dependencies: Enabled

#### Deployment Settings

- Action: Install
- Purpose: Available
- Allow end users to attempt to repair this application: Disabled
- Allow clients to use a metered Internet connection to download content: Disabled

#### Application Settings (retrieved from application in software library)

- Application Name: Office 365
- Application Version:
- Application Deployment Types: Script Installer

#### Scheduling

- Time based on: UTC
- Available Time: As soon as possible
- Deadline Time: Disabled
- Delayed enforcement on deployment: Disabled

#### User Experience

- User notifications: Display in Software Center, and only show notifications for computer restarts
- Ignore Maintenance Windows: Disabled
- System restart (if required to complete the installation): Disabled
- Commit changes at deadline or during a maintenance window (requires restarts): Enabled

#### Alerts

To change these settings, click Previous. To apply the settings, click Next.

< Previous

Next >

Summary

Cancel



## Completion

### General

Content

Deployment Settings

Scheduling

User Experience

Alerts

Summary

Progress

Completion



## The Deploy Software Wizard completed successfully

### Details:



#### Success: General

- Software: Office 365
- Collection: Office 365 (Member Count: 2)
- Use default distribution point groups associated to this collection: Disabled
- Automatically distribute content for dependencies: Enabled



#### Success: Deployment Settings

- Action: Install
- Purpose: Available
- Allow end users to attempt to repair this application: Disabled
- Allow clients to use a metered Internet connection to download content: Disabled



#### Success: Application Settings (retrieved from application in software library)

- Application Name: Office 365
- Application Version:
- Application Deployment Types: Script Installer



#### Success: Scheduling

- Time based on: UTC
- Available Time: As soon as possible
- Deadline Time: Disabled
- Delayed enforcement on deployment: Disabled



#### Success: User Experience

- User notifications: Display in Software Center, and only show notifications for computer restarts

To exit the wizard, click Close.

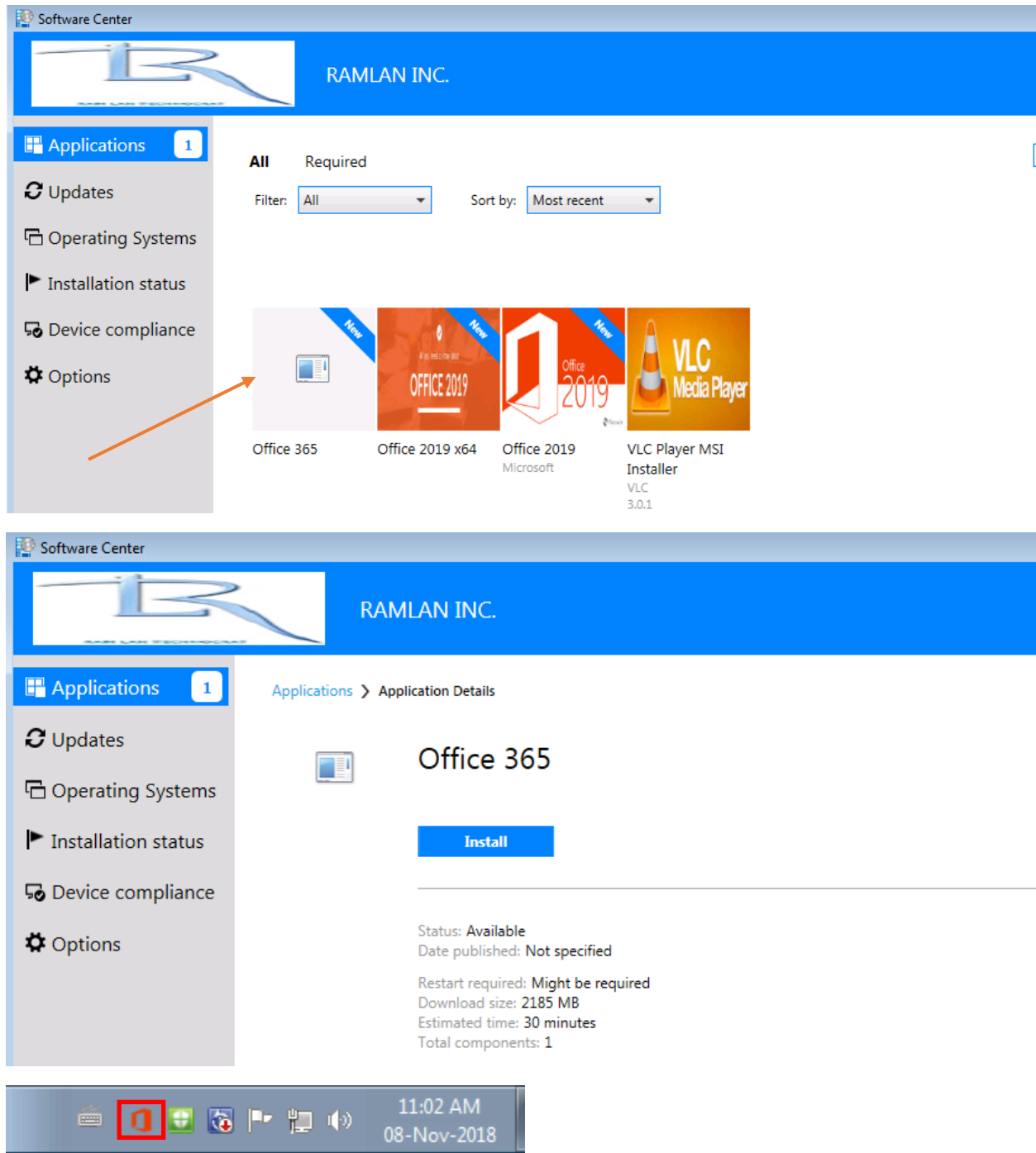
< Previous

Next >

Summary

Close

You can monitor the deployment on Win 7 and Win 8 workstations by open AppEnforce.log file from C:\Windows\CCM\Log location. If you see exit code 0 then Office 365 installed successfully.

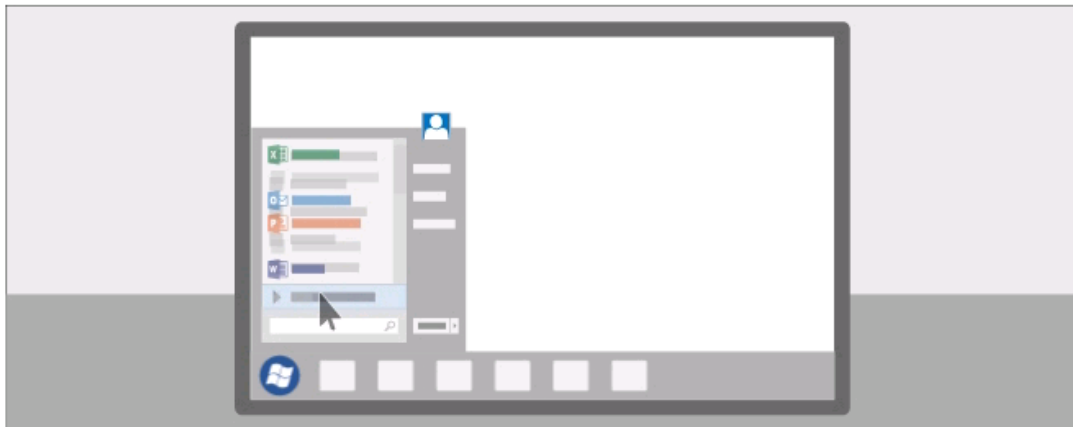




## Installing Office



We'll be done in just a moment.



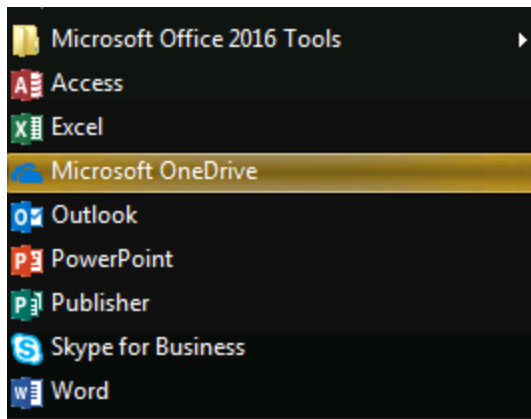
You're all set! Office is installed now


Click Start > All Programs.



Close






**RAMLAN INC.**

**Applications** 1

Applications > Application Details



## Office 365

Uninstall

Status: **Installed** ←  
Date published: Not specified  
Restart required: Might be required  
Download size: 2185 MB  
Estimated time: 30 minutes  
Total components: 1  
Date Modified: 08-Nov-2018

Updates

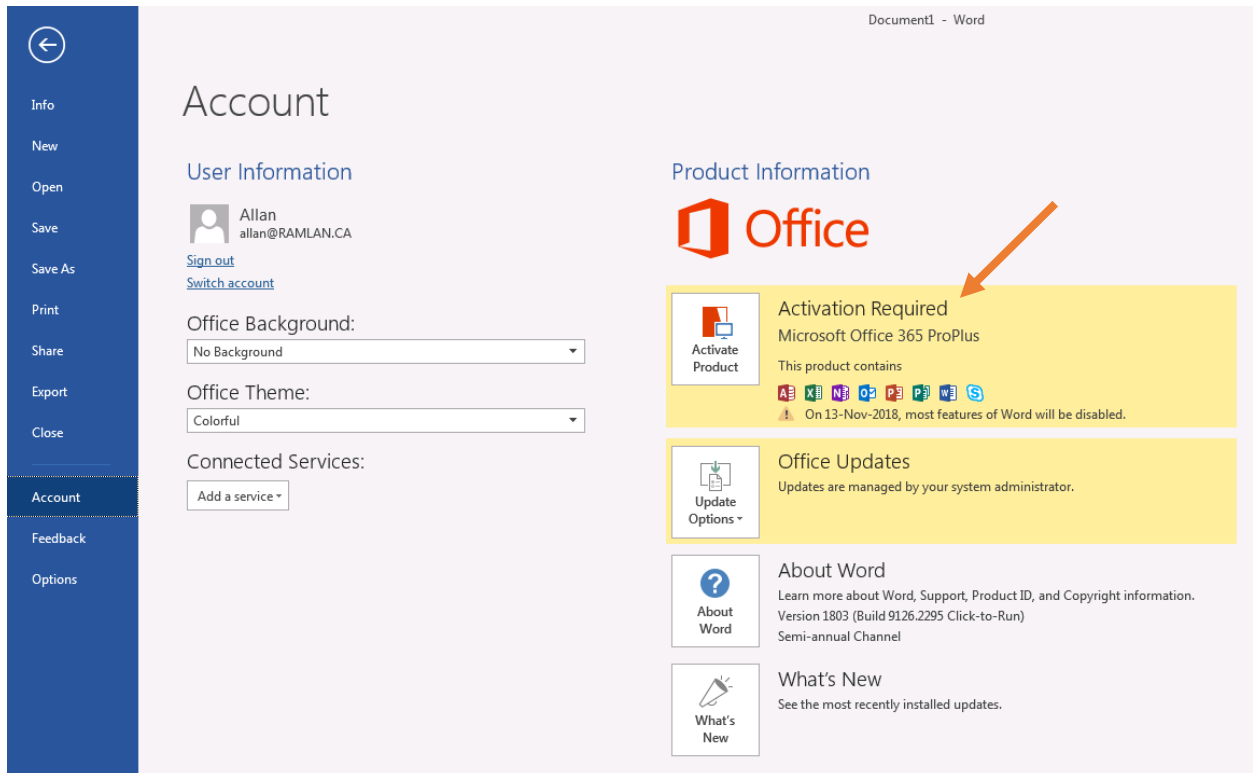
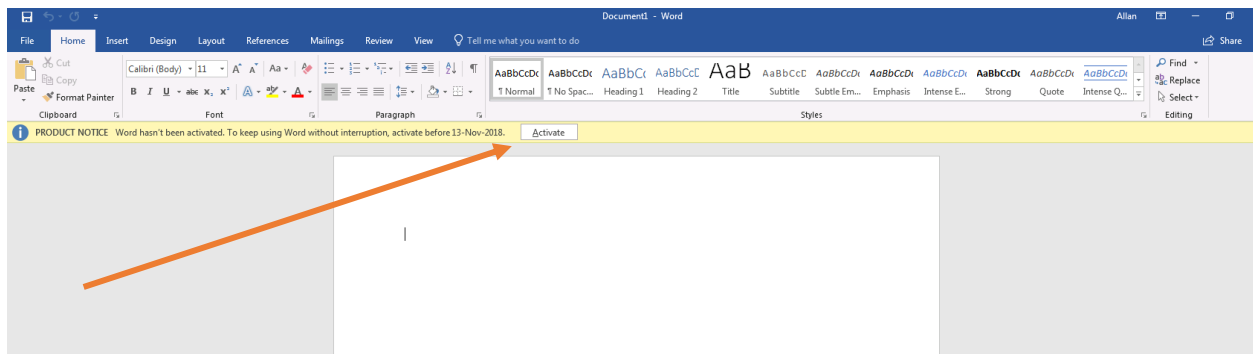
Operating Systems

Installation status

Device compliance

Options

Configuration Manager Trace Log Tool - [C:\Windows\CCM\Logs\AppEnforce.log]			
Log Text			
Log Text	Component	Date/Time	Thread
+++ Application not discovered. [AppDT Id: Scopeld_376A8806-54F5-4B02-B1BD-EF8319051820/DeploymentType_7c448668-da46-4991-a8c1-1ac9052e9660, Revision: 2]	AppEnforce	07-Nov-2018 10:25:52	3576 (0xDf8)
App enforcement environment: Context: MachineCommand line: Setup.exe /configure config.xmlAllow user interaction: NoUI mode: 1User token: nullSession Id: 2Co...	AppEnforce	07-Nov-2018 10:25:52	3576 (0xDf8)
Prepared working directory: C:\Windows\ccmcache\o	AppEnforce	07-Nov-2018 10:25:52	3576 (0xDf8)
Prepared command line: "C:\Windows\ccmcache\o\setup.exe" /configure config.xml	AppEnforce	07-Nov-2018 10:25:52	3576 (0xDf8)
Executing Command line: "C:\Windows\ccmcache\o\setup.exe" /configure config.xml with user context	AppEnforce	07-Nov-2018 10:25:52	3576 (0xDf8)
Working directory C:\Windows\ccmcache\o	AppEnforce	07-Nov-2018 10:25:52	3576 (0xDf8)
Post install behavior is BasedOnExitCode	AppEnforce	07-Nov-2018 10:25:52	3576 (0xDf8)
Waiting for process 4108 to finish. Timeout = 120 minutes.	AppEnforce	07-Nov-2018 10:25:52	3576 (0xDf8)
Process 4108 terminated with exitcode: 1603	AppEnforce	07-Nov-2018 10:28:28	3576 (0xDf8)
Looking for exit code 1603 in exit codes table...	AppEnforce	07-Nov-2018 10:28:28	3576 (0xDf8)
Unmatched exit code (1603) is considered an execution failure.	AppEnforce	07-Nov-2018 10:28:28	3576 (0xDf8)
++++++ App enforcement completed (156 seconds) for App DT "Office 2019" [Scopeld_376A8806-54F5-4B02-B1BD-EF8319051820/DeploymentType_7c448668-da46-49...	AppEnforce	07-Nov-2018 10:28:28	3576 (0xDf8)
+++ Starting install enforcement for App DT "Office 365 Default Deployment Type" ApplicationDeliveryType - Scopeld_376A8806-54F5-4B02-B1BD-EF8319051820/Deplo...	AppEnforce	08-Nov-2018 11:01:54	3724 (0xE8C)
Performing detection of app deployment type Office 365 Default Deployment Type(Scopeld_376A8806-54F5-4B02-B1BD-EF8319051820/DeploymentType_8a37dd6d-6...	AppEnforce	08-Nov-2018 11:01:54	3724 (0xE8C)
+++ Application not discovered. [AppDT Id: Scopeld_376A8806-54F5-4B02-B1BD-EF8319051820/DeploymentType_8a37dd6d-64cc-4b95-b4cb-b88a0eb5121c, Revision: 1]	AppEnforce	08-Nov-2018 11:01:54	3724 (0xE8C)
App enforcement environment: Context: MachineCommand line: setup.exe /configure configuration.xmlAllow user interaction: NoUI mode: 1User token: nullSession ...	AppEnforce	08-Nov-2018 11:01:54	3724 (0xE8C)
Prepared working directory: C:\Windows\ccmcache\p	AppEnforce	08-Nov-2018 11:01:54	3724 (0xE8C)
Prepared command line: "C:\Windows\ccmcache\p\setup.exe" /configure configuration.xml	AppEnforce	08-Nov-2018 11:01:55	3724 (0xE8C)
Executing Command line: "C:\Windows\ccmcache\p\setup.exe" /configure configuration.xml with user context	AppEnforce	08-Nov-2018 11:01:55	3724 (0xE8C)
Working directory C:\Windows\ccmcache\p	AppEnforce	08-Nov-2018 11:01:55	3724 (0xE8C)
Post install behavior is BasedOnExitCode	AppEnforce	08-Nov-2018 11:01:56	3724 (0xE8C)
Waiting for process 776 to finish. Timeout = 120 minutes.	AppEnforce	08-Nov-2018 11:01:56	3724 (0xE8C)
Process 776 terminated with exitcode: 0	AppEnforce	08-Nov-2018 11:08:03	3724 (0xE8C)
Looking for exit code 0 in exit codes table...	AppEnforce	08-Nov-2018 11:08:03	3724 (0xE8C)
Matched exit code 0 to a Success entry in exit codes table.	AppEnforce	08-Nov-2018 11:08:03	3724 (0xE8C)
Performing detection of app deployment type Office 365 Default Deployment Type(Scopeld_376A8806-54F5-4B02-B1BD-EF8319051820/DeploymentType_8a37dd6d-6...	AppEnforce	08-Nov-2018 11:08:03	3724 (0xE8C)
+++ Discovered application [AppDT Id: Scopeld_376A8806-54F5-4B02-B1BD-EF8319051820/DeploymentType_8a37dd6d-64cc-4b95-b4cb-b88a0eb5121c, Revision: 1]	AppEnforce	08-Nov-2018 11:08:03	3724 (0xE8C)
++++++ App enforcement completed (368 seconds) for App DT "Office 365 Default Deployment Type" [Scopeld_376A8806-54F5-4B02-B1BD-EF8319051820/Deploymen...	AppEnforce	08-Nov-2018 11:08:03	3724 (0xE8C)
Date/Time: 08-Nov-2018 11:08:03 AM Component: AppEnforce			
Thread: 3724 (0xE8C) Source: appenrilib.cpp:585			
Matched exit code 0 to a Success entry in exit codes table.			



As you can see from above screen shot Office 365 is not activated because, I don't have a valid subscription with MS.

This concludes Office 365 deployment through CB1806.

Thanks

**Ram Lan**  
**8<sup>th</sup> Nov 2018**