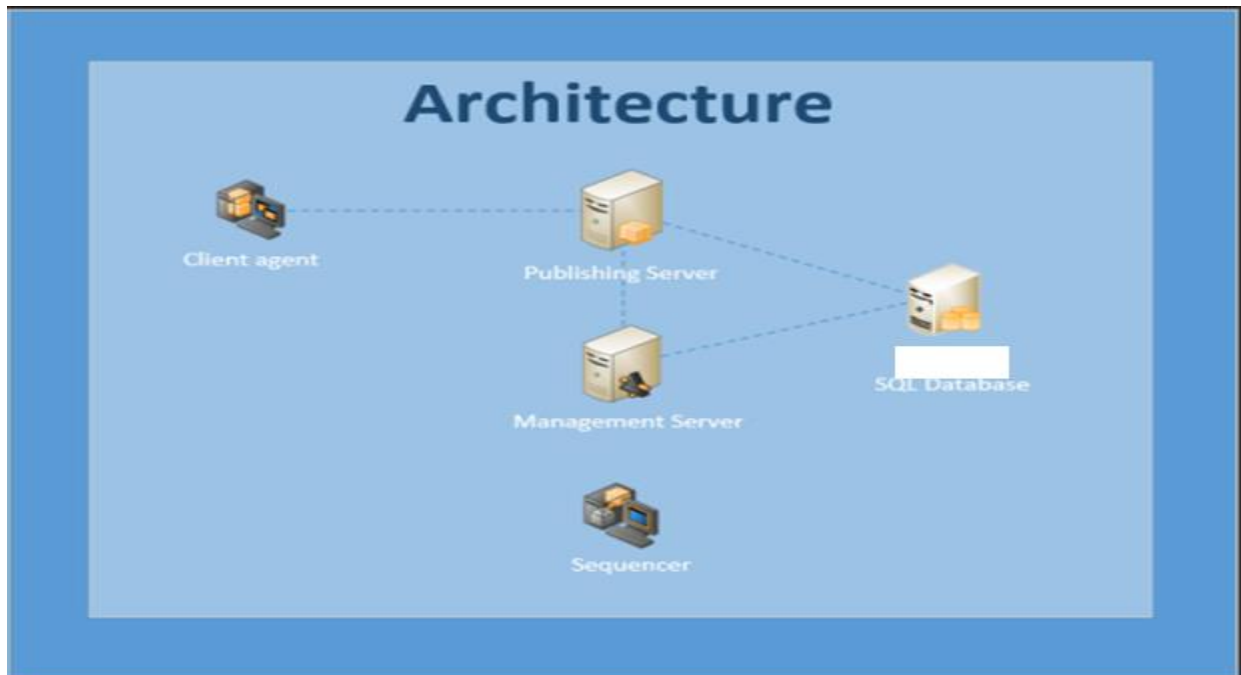


## INSTALL APP-V 5.1 ON WINDOWS SERVER 2016

In this exercise, I will walk you through the process of installing App-V 5.1 SP1 on Windows Server 2016. I will be installing these roles (Management, Publishing & Reporting Server) on a single server infrastructure.



Below you see a diagram of my servers in my lab environment.



**APPV.RAMLAN.CA**  
**WINDOWS SERVE 2016**  
**Appv Server 5.1 SP1**



**DC1.RAMLAN.CA**  
**WINDOWS SERVER 2016**  
**DOMAIN CONTROLLER**



**DC2.RAMLAN.CA**  
**WINDOWS SERVER 2016**  
**DOMAIN CONTROLLER**



**APPV.RAMLAN.CA**  
**Windows Server 2016**  
**AppV Server**

**Management Server Port 55555**  
**Publishing Server Port 55556**

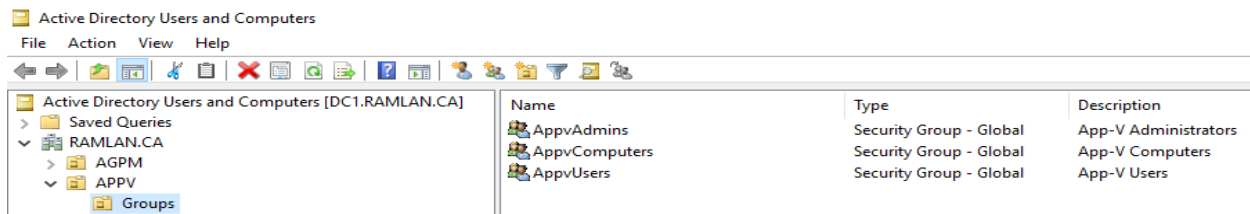


**WIN7.RAMLAN.CA**  
**Windows 7 Client x64**  
**AppV Client**

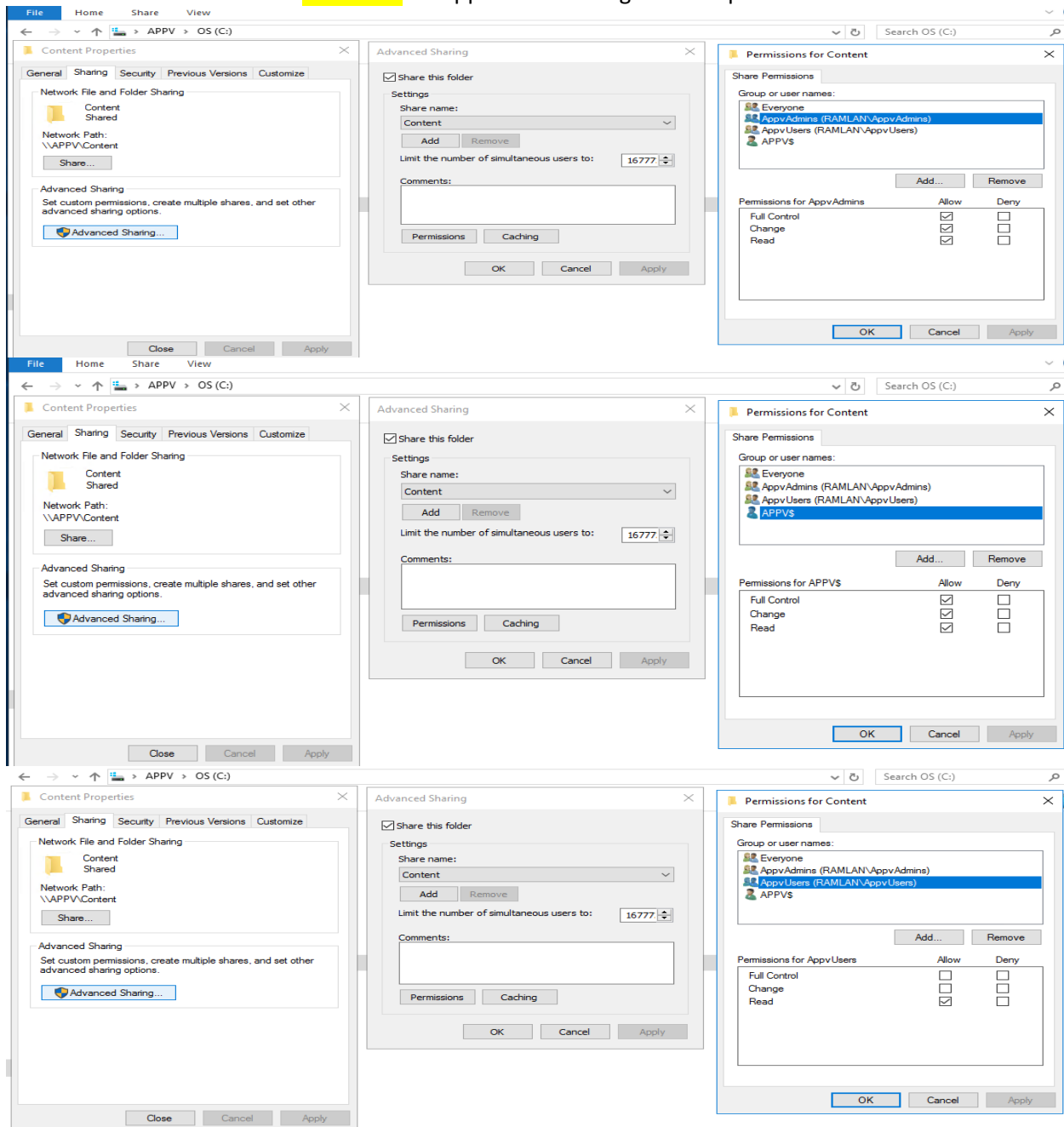


**WIN10.RAMLAN.CA**  
**Windows 10 Client x64**  
**AppV Client**

Create 3 security groups in AD.



Create a shared folder called **CONTENT** on App-v Server and give these permissions:



Install these pre requisites – Open PowerShell as Admin and run these commands

Install-WindowsFeature Web-Server

Install-WindowsFeature Web-Asp-Net

Install-WindowsFeature Web-Net-Ext

Install-WindowsFeature Web-ISAPI-Ext

Install-WindowsFeature Web-ISAPI-Filter

Install-WindowsFeature Web-Windows-Auth

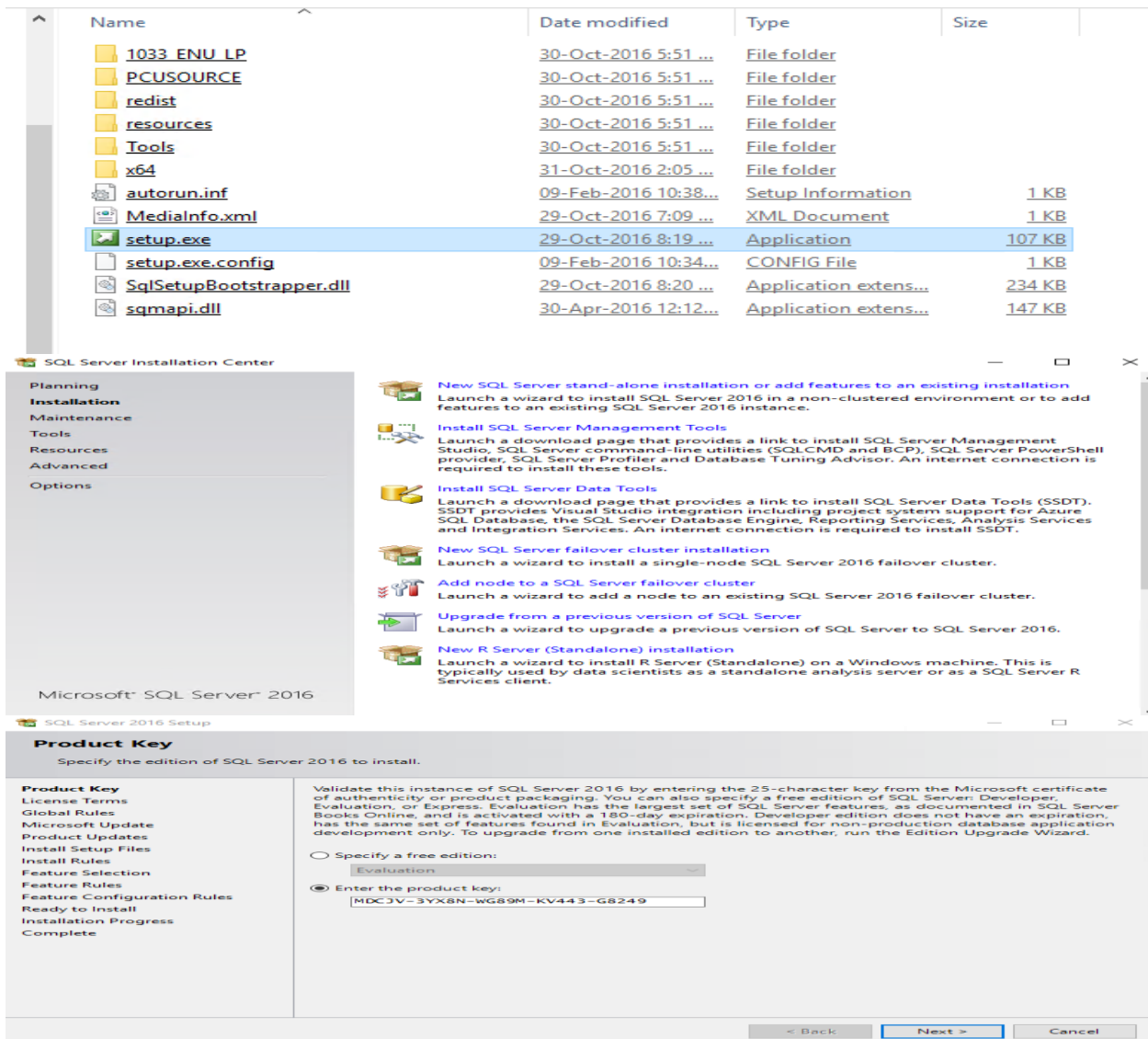
Install-WindowsFeature Web-Mgmt-Console

Install-WindowsFeature NET-Framework-45-ASPNET

Install-WindowsFeature Web-Asp-Net45

The next step is to install SQL 2016 SP1, SP2 + CU2 as detailed below:

> APPV > DVD Drive (D:) SQL2016\_x64\_ENU >



SQL Server 2016 Setup

License Terms

To install SQL Server 2016, you must accept the Microsoft Software License Terms.

Product Key

License Terms

Global Rules

Microsoft Update

Product Updates

Install Setup Files

Install Rules

Feature Selection

Feature Rules

Feature Configuration Rules

Ready to Install

Installation Progress

Complete

**MICROSOFT SOFTWARE LICENSE TERMS**

**MICROSOFT SQL SERVER 2016 ENTERPRISE**

These license terms are an agreement between Microsoft Corporation (or based on where you live, one of its affiliates) and you. Please read them. They apply to the software named above, which includes the media on which you received it, if any. The terms also apply to any Microsoft

- updates,
- supplements,
- Internet-based services, and
- support services.

☒ I accept the license terms.

SQL Server 2016 transmits information about your installation experience, as well as other usage and performance data, to Microsoft to help improve the product. To learn more about SQL Server 2016 data processing and privacy controls, please see the [Privacy Statement](#).

Copy

Print

< Back

Next >

Cancel

SQL Server 2016 Setup

Microsoft Update

Use Microsoft Update to check for important updates

Product Key

License Terms

Global Rules

Microsoft Update

Product Updates

Install Setup Files

Install Rules

Feature Selection

Feature Rules

Feature Configuration Rules

Ready to Install

Installation Progress

Complete

Microsoft Update offers security and other important updates for Windows and other Microsoft software, including SQL Server 2016. Updates are delivered using Automatic Updates, or you can visit the Microsoft Update website.

☒ Use Microsoft Update to check for updates (recommended)

[Microsoft Update FAQ](#)

[Microsoft Update Privacy Statement](#)

< Back

Next >

Cancel

SQL Server 2016 Setup

Install Setup Files

If an update for SQL Server Setup is found and specified to be included, the update will be installed.

Product Key

License Terms

Global Rules

Microsoft Update

Product Updates

Install Setup Files

Install Rules

Feature Selection

Feature Rules

Feature Configuration Rules

Ready to Install

Installation Progress

Complete

| Task                     | Status      |
|--------------------------|-------------|
| Scan for product updates | Completed   |
| Download Setup files     | Skipped     |
| Extract Setup files      | Skipped     |
| Install Setup files      | Not started |

< Back

Next >

Cancel

## Install Rules

Setup rules identify potential problems that might occur while running Setup. Failures must be corrected before Setup can continue.

Product Key  
License Terms  
Global Rules  
Microsoft Update  
Product Updates  
Install Setup Files  
**Install Rules**  
Feature Selection  
Feature Rules  
Feature Configuration Rules  
Ready to Install  
Installation Progress  
Complete

Operation completed. Passed: 4. Failed 0. Warning 1. Skipped 0.

Hide details <<

Re-run

[View detailed report](#)

| Rule  | Status                  |
|---|-------------------------|
| Fusion Active Template Library (ATL)                | <a href="#">Passed</a>  |
| Consistency validation for SQL Server registry keys | <a href="#">Passed</a>  |
| Computer domain controller                          | <a href="#">Passed</a>  |
| Microsoft .NET Application Security                 | <a href="#">Passed</a>  |
| Windows Firewall                                    | <a href="#">Warning</a> |

< Back

Next >

Cancel

## Feature Selection

Select the Enterprise features to install.

Product Key  
License Terms  
Global Rules  
Microsoft Update  
Product Updates  
Install Setup Files  
Install Rules  
**Feature Selection**  
Feature Rules  
Instance Configuration  
Server Configuration  
Database Engine Configuration  
Reporting Services Configuration  
Feature Configuration Rules  
Ready to Install  
Installation Progress  
Complete

Features:

- Instance Features**
- ☒ Database Engine Services
    - ☐ SQL Server Replication
    - ☐ R Services (In-Database)
    - ☒ Full-Text and Semantic Extractions for Sea
    - ☐ Data Quality Services
    - ☐ PolyBase Query Service for External Data
  - ☐ Analysis Services
  - ☒ Reporting Services - Native
- Shared Features**
- ☐ R Server (Standalone)
  - ☐ Reporting Services - SharePoint
  - ☐ Reporting Services Add-in for SharePoint Proc

Select All

Unselect All

Instance root directory:

C:\Program Files\Microsoft SQL Server\

Shared feature directory:

C:\Program Files\Microsoft SQL Server\

Shared feature directory (x86):

C:\Program Files (x86)\Microsoft SQL Server\

Feature description:

The configuration and operation of each instance feature of a SQL Server instance is isolated from other SQL Server instances. SQL Server instances can operate side-by-side on

Prerequisites for selected features:

Already installed:  
... Windows PowerShell 3.0 or higher  
... Microsoft .NET Framework 4.6

Disk Space Requirements

Drive C: 2322 MB required, 278447 MB available

< Back

Next >

Cancel

## Instance Configuration

Specify the name and instance ID for the instance of SQL Server. Instance ID becomes part of the installation path.

Product Key  
License Terms  
Global Rules  
Microsoft Update  
Product Updates  
Install Setup Files  
Install Rules  
Feature Selection  
Feature Rules  
**Instance Configuration**  
Server Configuration  
Database Engine Configuration  
Reporting Services Configuration  
Feature Configuration Rules  
Ready to Install  
Installation Progress  
Complete

☐ Default instance

☒ Named instance:

APPV2016DB

Instance ID:

APPV2016DB

SQL Server directory:

C:\Program Files\Microsoft SQL Server\MSSQL13.APPV2016DB

Reporting Services directory:

C:\Program Files\Microsoft SQL Server\MSRS13.APPV2016DB

Installed instances:

| Instance Name | Instance ID | Features | Edition | Version |
|---------------|-------------|----------|---------|---------|
|               |             |          |         |         |

< Back

Next >

Cancel

## Server Configuration

Specify the service accounts and collation configuration.

Product Key  
License Terms  
Global Rules  
Microsoft Update  
Product Updates  
Install Setup Files  
Install Rules  
Feature Selection  
Feature Rules  
Instance Configuration  
**Server Configuration**  
Database Engine Configuration  
Reporting Services Configuration  
Feature Configuration Rules  
Ready to Install  
Installation Progress  
Complete

## Service Accounts

Microsoft recommends that you use a separate account for each SQL Server service.

| Service                              | Account Name            | Password | Startup Type |
|--------------------------------------|-------------------------|----------|--------------|
| SQL Server Agent                     | RAMLAN\ADMINISTRAT...   | •••••••• | Automatic    |
| SQL Server Database Engine           | RAMLAN\ADMINISTRAT...   | •••••••• | Automatic    |
| SQL Server Reporting Services        | RAMLAN\ADMINISTRAT...   | •••••••• | Automatic    |
| SQL Full-text Filter Daemon Launc... | NT Service\MSSQLFDLa... |          | Manual       |
| SQL Server Browser                   | NT AUTHORITY\LOCAL ...  |          | Automatic    |

☐ Grant Perform Volume Maintenance Task privilege to SQL Server Database Engine Service

This privilege enables instant file initialization by avoiding zeroing of data pages. This may lead to information disclosure by allowing deleted content to be accessed.

[Click here for details](#)

&lt; Back

Next &gt;

Cancel

## Server Configuration

Specify the service accounts and collation configuration.

Product Key  
License Terms  
Global Rules  
Microsoft Update  
Product Updates  
Install Setup Files  
Install Rules  
Feature Selection  
Feature Rules  
Instance Configuration  
**Server Configuration**  
Database Engine Configuration  
Reporting Services Configuration  
Feature Configuration Rules  
Ready to Install  
Installation Progress  
Complete

## Collation

Database Engine:

Latin1\_General\_CI\_AS

Customize...

Latin1-General, case-insensitive, accent-sensitive, kanatype-insensitive, width-insensitive for Unicode Data, SQL Server Sort Order 52 on Code Page 1252 for non-Unicode Data

&lt; Back

Next &gt;

Cancel

## Database Engine Configuration

Specify Database Engine authentication security mode, administrators, data directories and TempDB settings.

Product Key  
License Terms  
Global Rules  
Microsoft Update  
Product Updates  
Install Setup Files  
Install Rules  
Feature Selection  
Feature Rules  
Instance Configuration  
Server Configuration  
**Database Engine Configuration**  
Reporting Services Configuration  
Feature Configuration Rules  
Ready to Install  
Installation Progress  
Complete

## Server Configuration

Specify the authentication mode and administrators for the Database Engine.

Authentication Mode

☒ Windows authentication mode☐ Mixed Mode (SQL Server authentication and Windows authentication)

Specify the password for the SQL Server system administrator (sa) account.

Enter password:

Confirm password:

Specify SQL Server administrators

RAMLAN\ADMINISTRATOR (Administrator)  
RAMLAN\ram (Ram)  
RAMLAN\AppvAdmins (AppvAdmins)  
APPV\Administrator (Administrator)

SQL Server administrators  
have unrestricted access  
to the Database Engine.

Add Current User

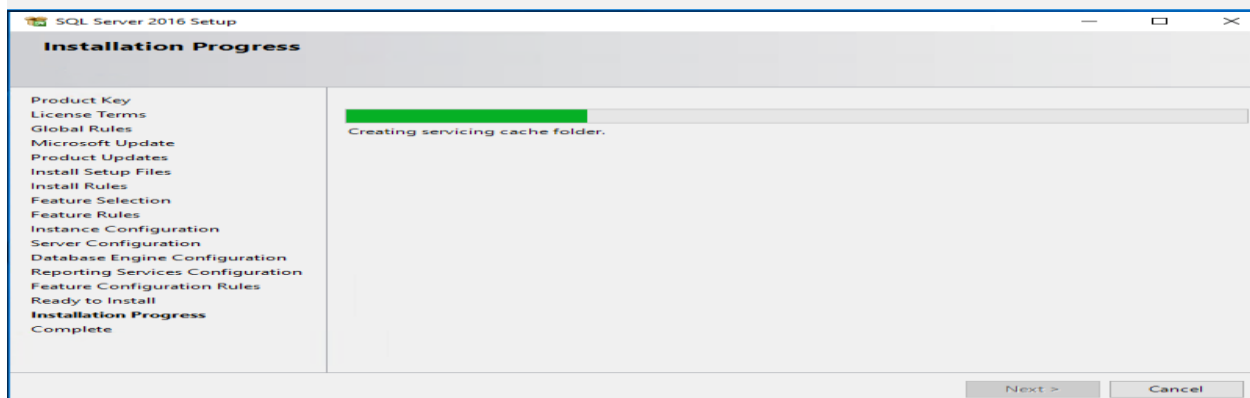
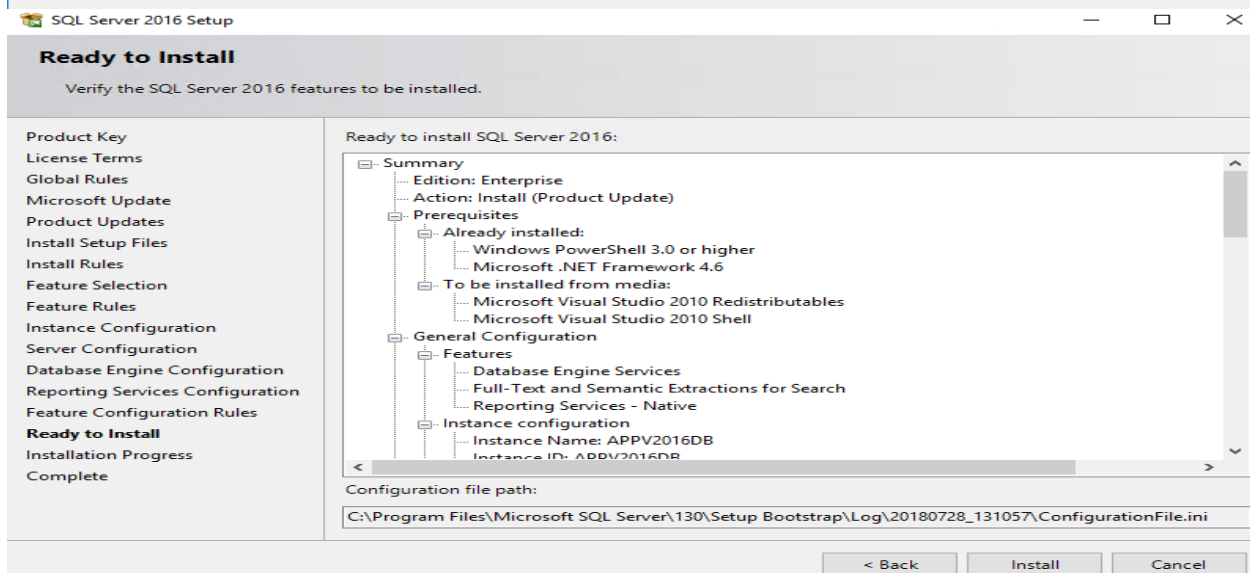
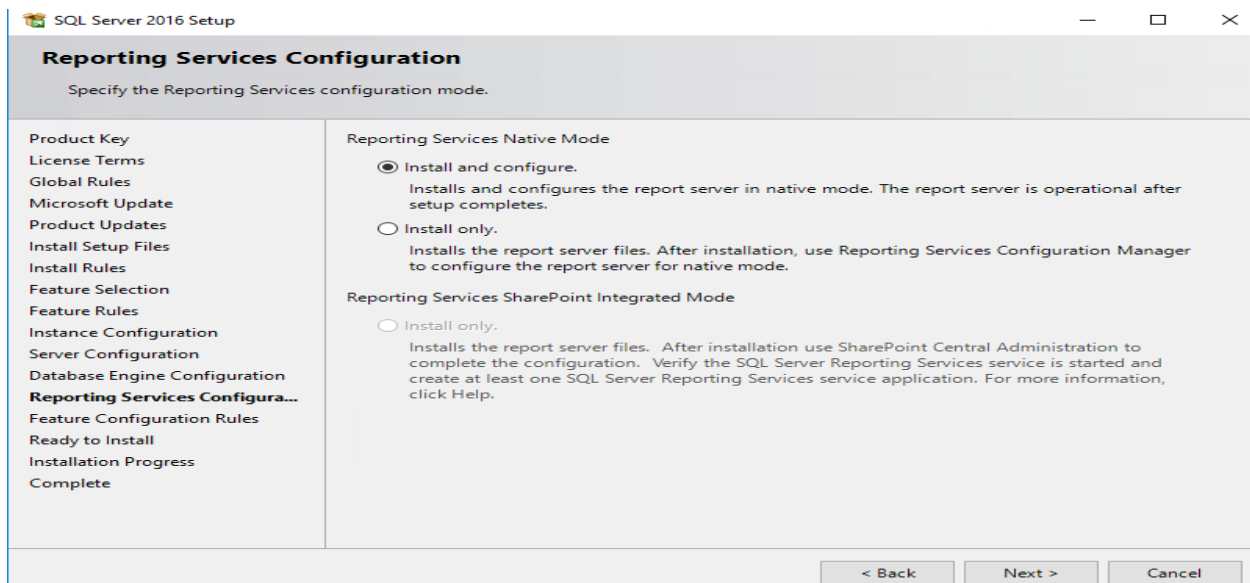
Add...

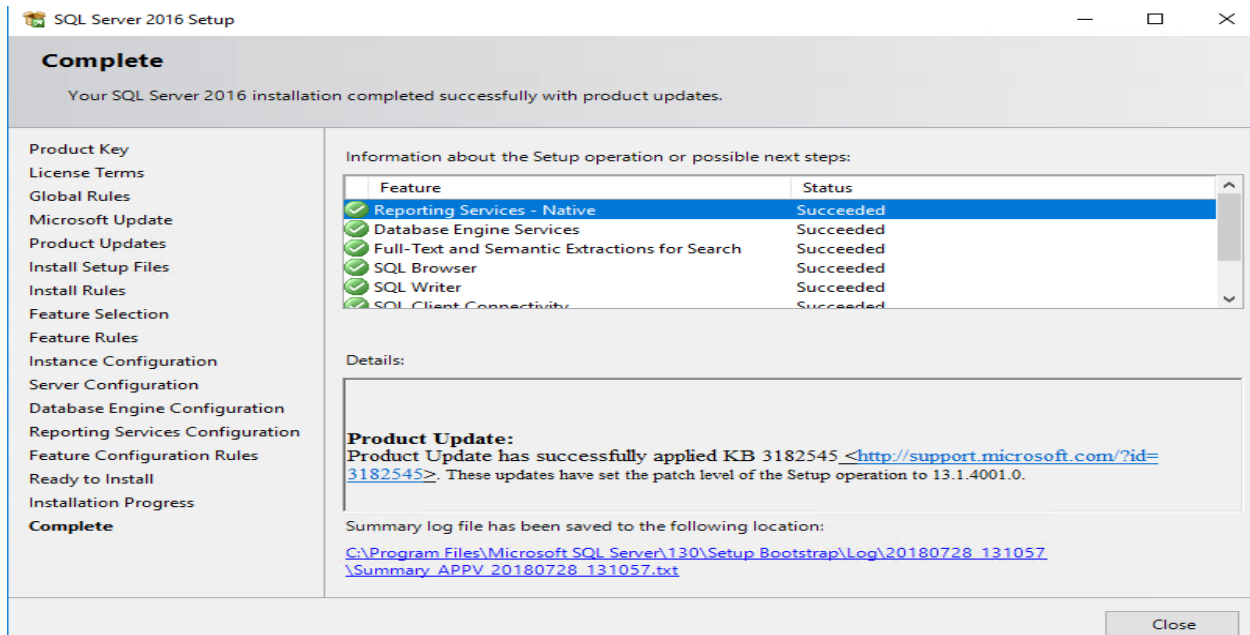
Remove

&lt; Back

Next &gt;

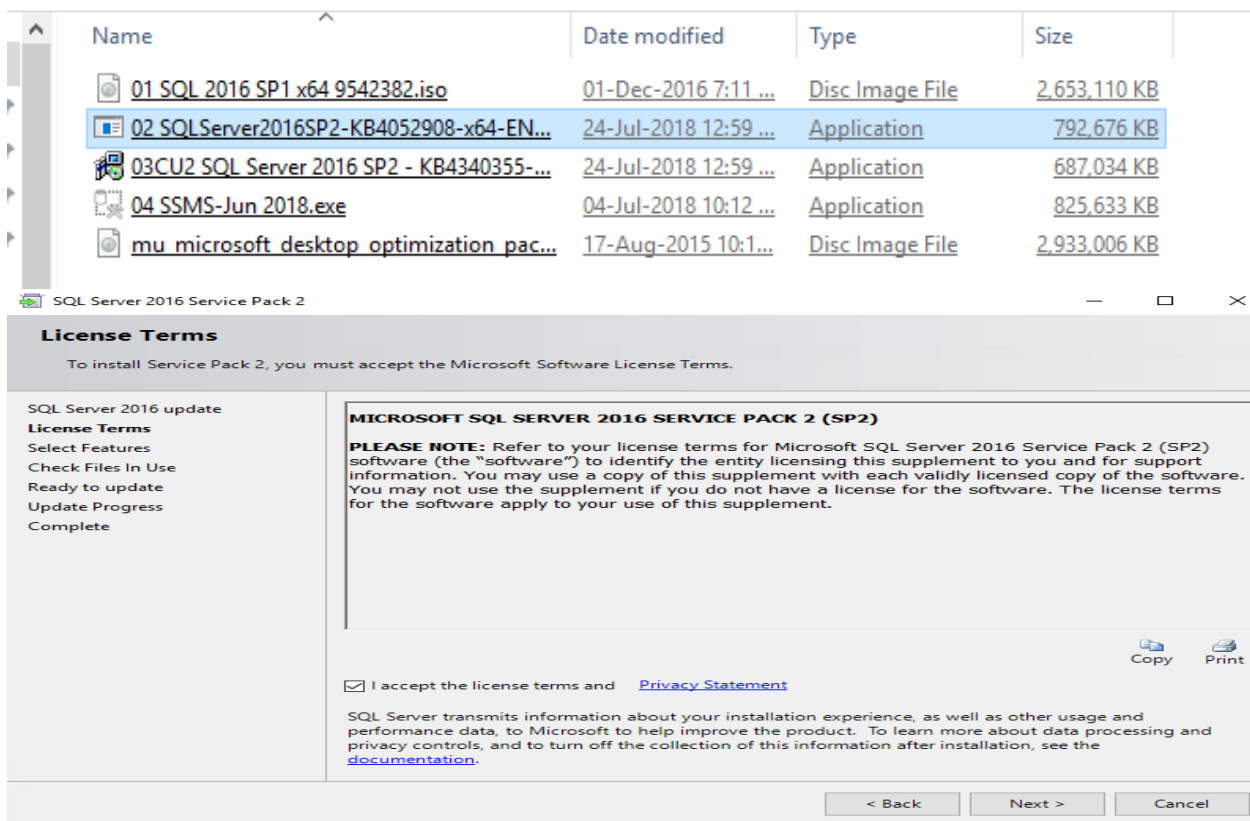
Cancel





Now, I will install SP2 (SQL 2016 SP1)

» Administrator » Downloads



SQL Server 2016 Service Pack 2

Select Features

Specify the features to update.

SQL Server 2016 update

License Terms

Select Features

Check Files In Use

Ready to update

Update Progress

Complete

Instances:

☒ APPV2016DB
 

Database Engine Services
 

Full-Text and Semantic Extractions for Search

 Reporting Services - Native

☒ Shared Features
 

SQL Client Connectivity SDK

Select All

Unselect All

Description:

Language:

Edition:

Patch Level:

Architecture:

Service Pack:

Upgrade Status:

< Back

Next >

Cancel

SQL Server 2016 Service Pack 2

Check Files In Use

The following services and applications are using files that Setup needs to complete the installation. To avoid a computer restart, stop the applications and services.

SQL Server 2016 update

License Terms

Select Features

Check Files In Use

Ready to update

Update Progress

Complete

Files in use check completed.

Stop check

Refresh check

| Process                   | Type        | Account              | ProcessID |
|---------------------------|-------------|----------------------|-----------|
| WmiPrvSE.exe              | Application | NT AUTHORITY\SYSTEM  | 1488      |
| MonitoringHost.exe        | Application | RAMLAN\ADMINISTRA... | 3028      |
| Microsoft.ReportingSer... | Application | RAMLAN\ADMINISTRA... | 5300      |

The 'WmiPrvSE.exe' process is not controlled by the update wizard. You have to manually stop this process to avoid a computer restart.

< Back

Next >

Cancel

SQL Server 2016 Service Pack 2

Ready to update

Verify the list of features to be updated.

SQL Server 2016 update

License Terms

Select Features

Check Files In Use

Ready to update

Update Progress

Complete

Ready to update:

Summary

Action: Patch

General Configuration

APPV2016DB

Features

Database Engine Services
 

Full-Text and Semantic Extractions for Search

 Reporting Services - Native

Attributes

Language: English - United States
 

Edition: Enterprise

Patch Level: 13.1.4001.0

Processor Type: x64

Service Pack: 1

Upgrade Status: Not installed.

Shared Features

Features

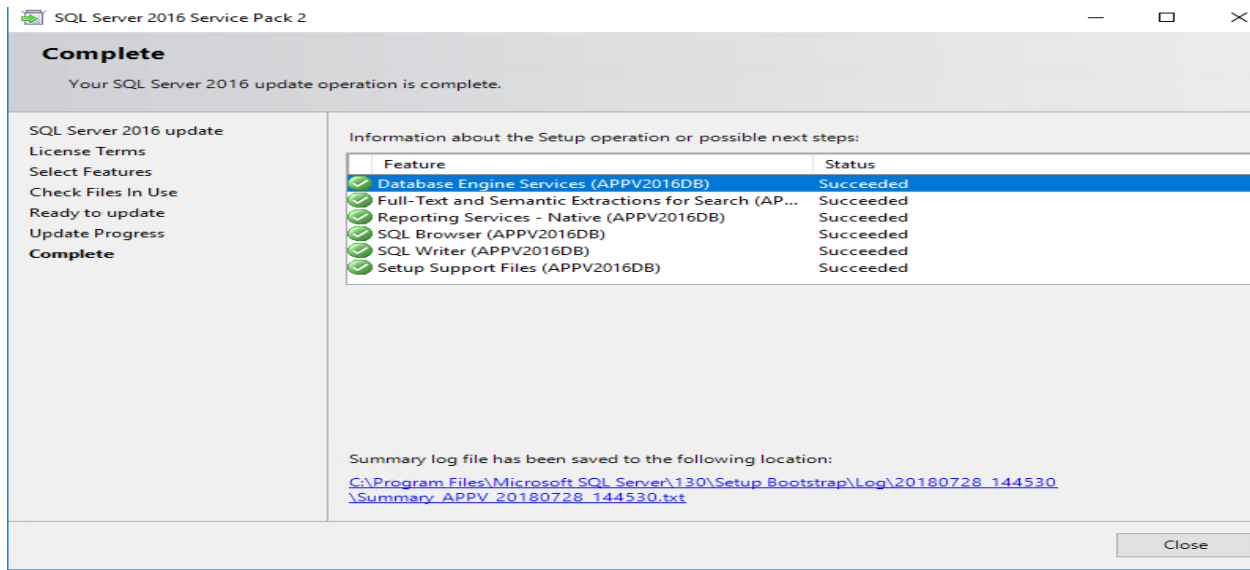
SQL Client Connectivity SDK

Configuration file path:

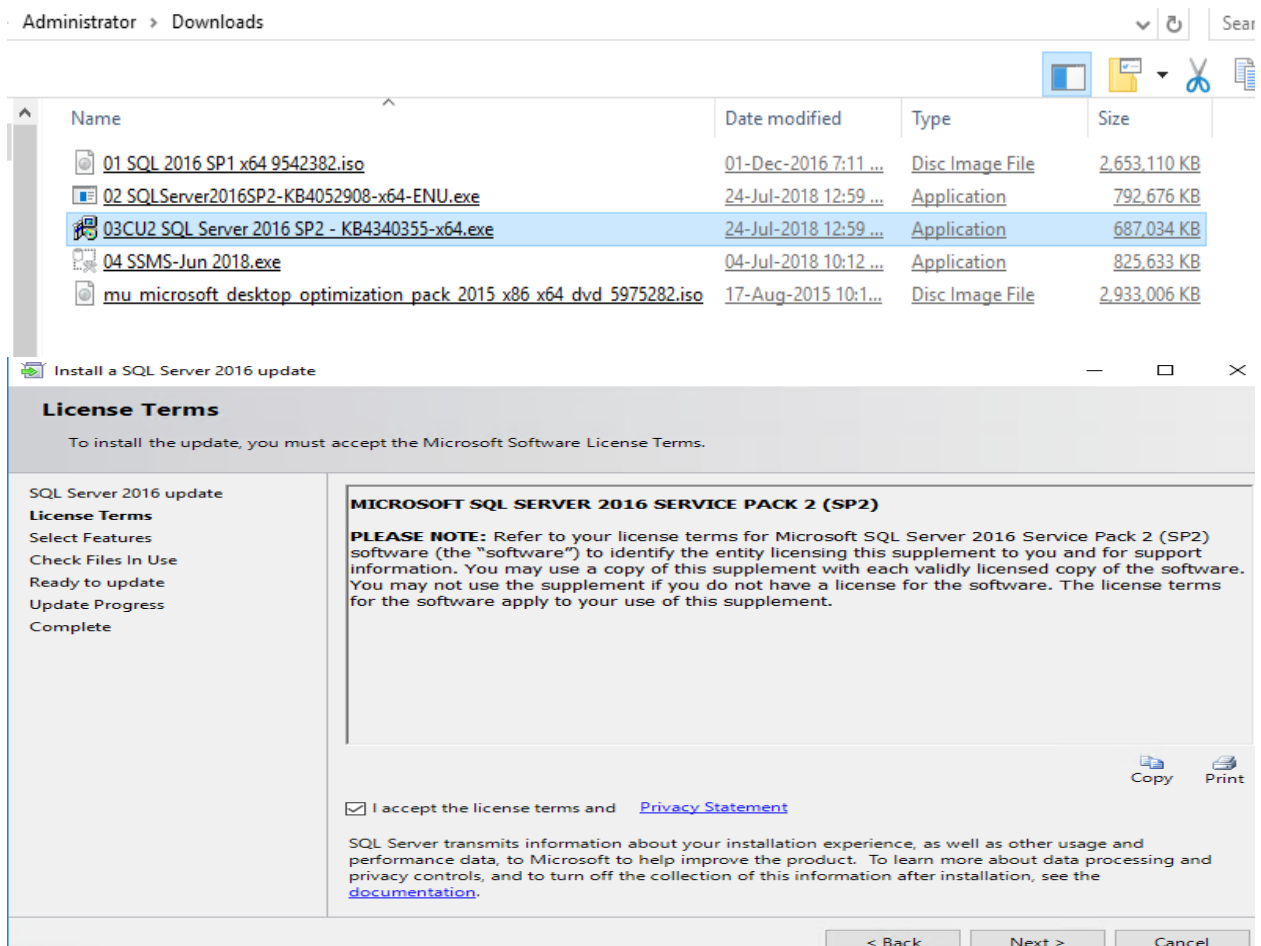
< Back

Update

Cancel



Now, I will install CU2 (SQL 2016 SP2)



## Select Features

Specify the features to update.

SQL Server 2016 update

License Terms

**Select Features**

Check Files In Use

Ready to update

Update Progress

Complete

Instances:

☒ APPV2016DB  
     ... Database Engine Services  
     ... Full-Text and Semantic Extractions for Search  
     ... Reporting Services - Native  
☒ Shared Features  
     ... SQL Client Connectivity SDK

Select All

Unselect All

Description:

Language:

Edition:

Patch Level:

Architecture:

Service Pack:

Upgrade Status:

< Back

Next >

Cancel

## Check Files In Use

The following services and applications are using files that Setup needs to complete the installation. To avoid a computer restart, stop the applications and services.

SQL Server 2016 update

License Terms

Select Features

**Check Files In Use**

Ready to update

Update Progress

Complete

Files in use check completed.

Stop check

Refresh check

| Process                   | Type        | Account              | ProcessID |
|---------------------------|-------------|----------------------|-----------|
| Microsoft.ReportingSer... | Application | RAMLAN\ADMINISTRA... | 3192      |
| WmiPrvSE.exe              | Application | NT AUTHORITY\SYSTEM  | 3780      |
| MonitoringHost.exe        | Application | RAMLAN\ADMINISTRA... | 4056      |
| MonitoringHost.exe        | Application | NT AUTHORITY\SYSTEM  | 2884      |
| WmiPrvSE.exe              | Application | NT AUTHORITY\NETW... | 4784      |

The 'Microsoft.ReportingServices.Portal.WebHost.exe' process is not controlled by the update wizard. You have to manually stop this process to avoid a computer restart.

< Back

Next >

Cancel

## Ready to update

Verify the list of features to be updated.

SQL Server 2016 update

License Terms

Select Features

Check Files In Use

**Ready to update**

Update Progress

Complete

Ready to update:

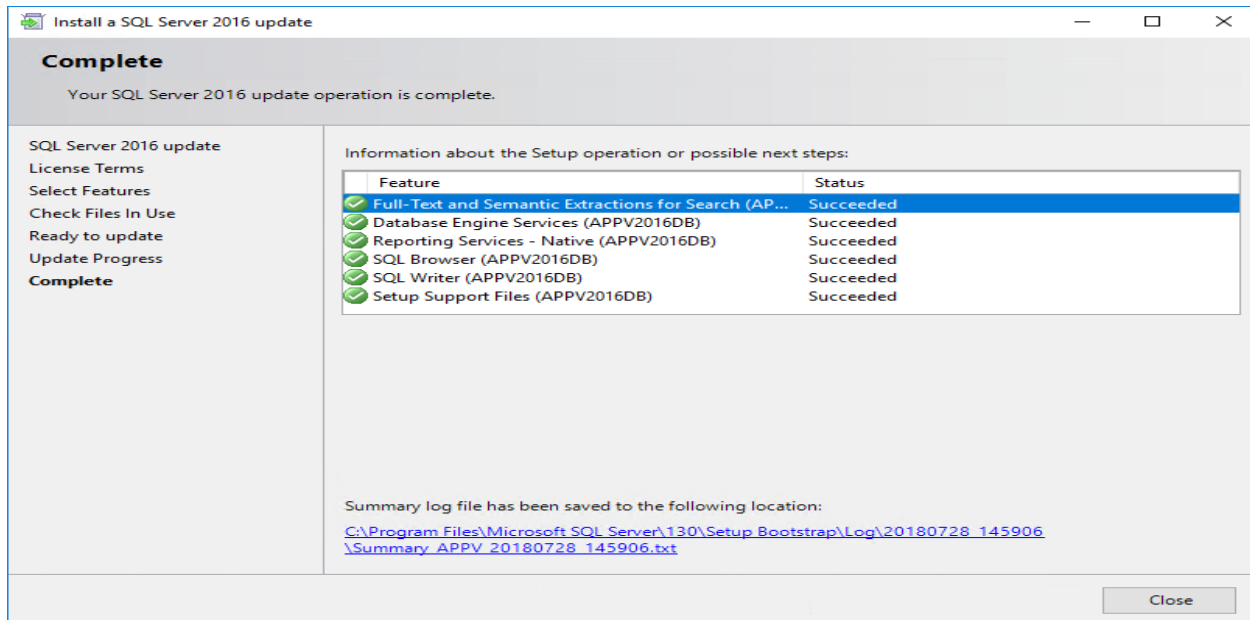
Summary  
     ... Action: Patch  
     General Configuration  
         APPV2016DB  
             Features  
                 ... Database Engine Services  
                 ... Full-Text and Semantic Extractions for Search  
                 ... Reporting Services - Native  
             Attributes  
                 ... Language: English - United States  
                 ... Edition: Enterprise  
                 ... Patch Level: 13.2.5026.0  
                 ... Processor Type: x64  
                 ... Service Pack: 2  
                 ... Upgrade Status: Not installed.  
         Shared Features  
             Features  
                 ... SQL Client Connectivity SDK

Configuration file path:

< Back

Update

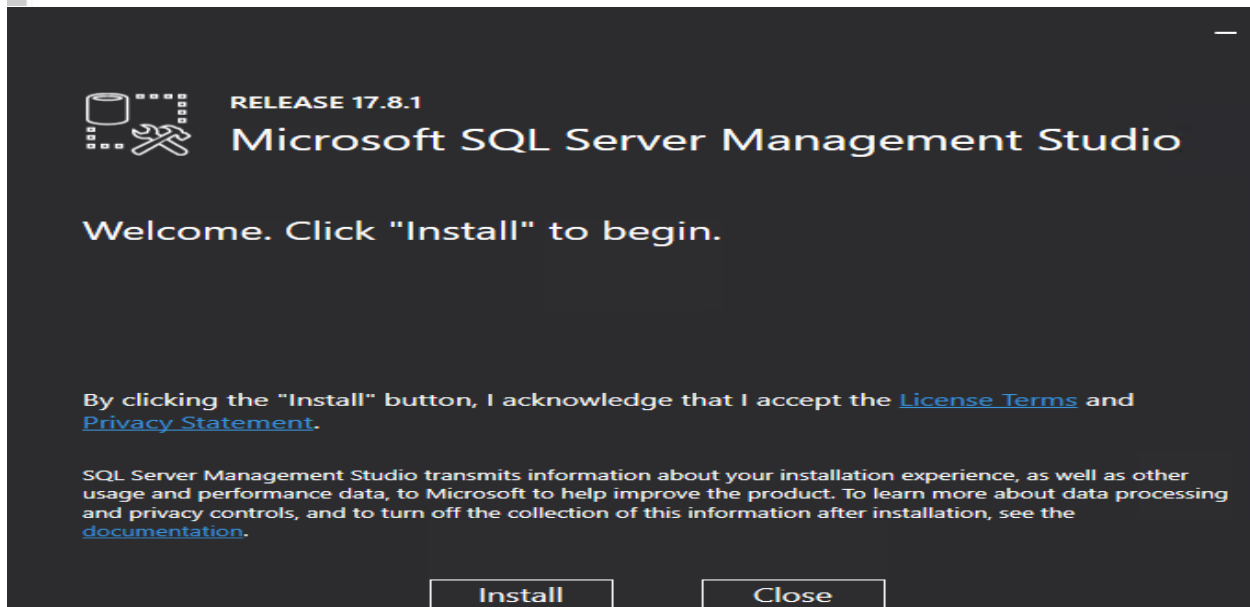
Cancel

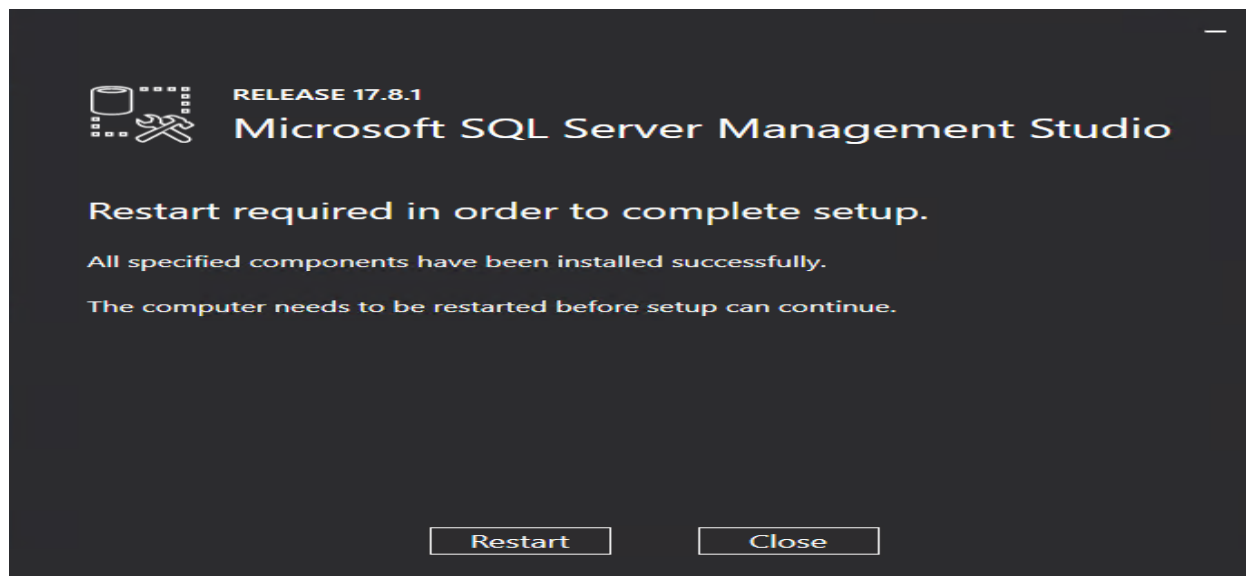


Now, I will install SQL Management Studio

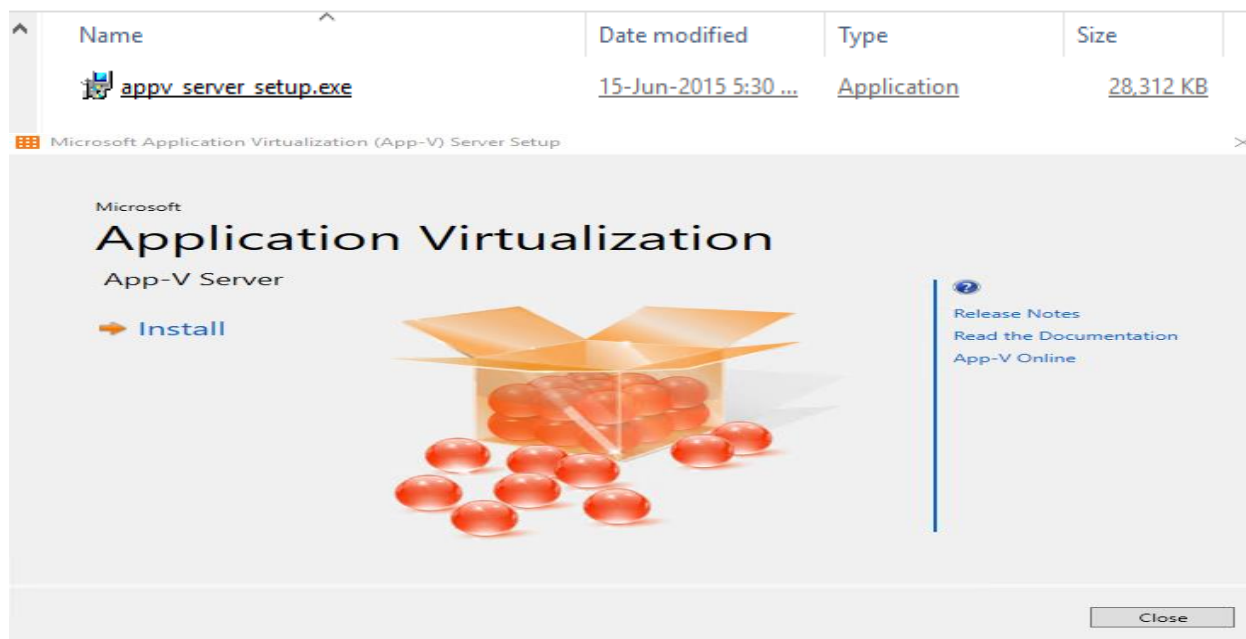
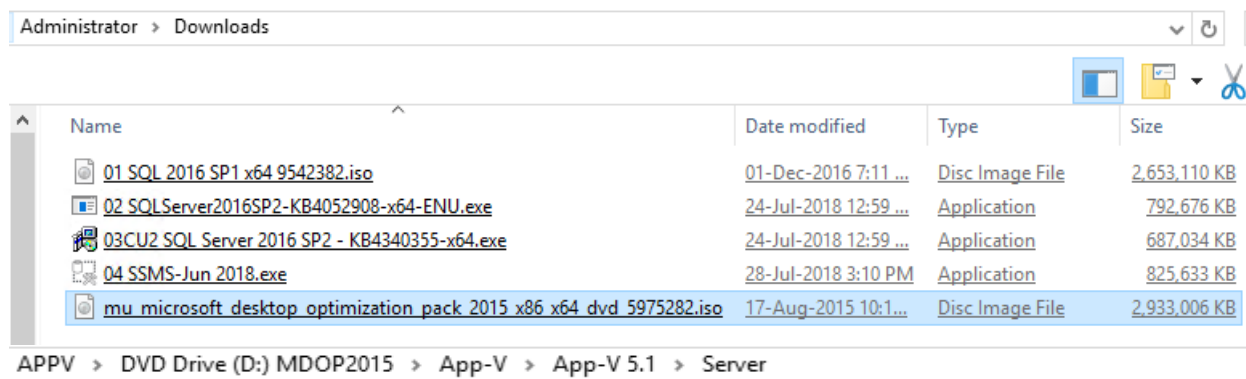
APPV > Downloads

| Name  | Date modified         | Type            | Size         |
|---|-----------------------|-----------------|--------------|
| 01 SQL 2016 SP1 x64 9542382.iso                                 | 01-Dec-2016 7:11 ...  | Disc Image File | 2,653,110 KB |
| 02 SQLServer2016SP2-KB4052908-x64-ENU.exe                       | 24-Jul-2018 12:59 ... | Application     | 792,676 KB   |
| 03CU2 SQL Server 2016 SP2 - KB4340355-x64.exe                   | 24-Jul-2018 12:59 ... | Application     | 687,034 KB   |
| 04 SSMS-Jun 2018.exe  | 04-Jul-2018 10:12 ... | Application     | 825,633 KB   |
| mu microsoft desktop optimization pack 2015 x86 x64 dvd 5975... | 17-Aug-2015 10:1...   | Disc Image File | 2,933,006 KB |





Now, I will install APPV 5.1 using MDOP 2015 ISO.



## Getting Started

[Help](#)

## Software License Terms

You must accept the license terms before you can install or use the software. If you do not accept the license terms, installation will not proceed. You may print the license terms by clicking the Print button below. After installation, the license terms are available under the Microsoft Application Virtualization (App-V) Server install directory. ([Read our privacy policy](#))

## Microsoft Application Virtualization (App-V) Server

PLEASE NOTE: Your use of this software is subject to the terms and conditions of the license agreement by which you (or your company) acquired the Microsoft software. For instance, if you are:

- a volume license customer, use of this software is subject to your volume license agreement; or
- a MSDN or TechNet customer, use of this software is subject to the applicable MSDN or TechNet license agreement.

You may not use this software if you have not validly acquired a license for the software from Microsoft.

- ☒ I accept the license terms.  
☐ I do not accept the license terms.

[Print License Terms](#)

&lt; Previous

Next &gt;

Cancel

## Feature Selection

[Help](#)

## Select App-V Server Features to be Installed

- |  |   |
|--|---|
| <input checked="" type="checkbox"/> Management Server    | Provides overall management functionality for the App-V infrastructure. |
| <input checked="" type="checkbox"/> Management Server DB | Database Pre-Deployments for App-V management.                          |
| <input checked="" type="checkbox"/> Publishing Server    | Provides hosting and streaming functionality for virtual applications.  |
| <input checked="" type="checkbox"/> Reporting Server     | Provides App-V reporting services.                                      |
| <input checked="" type="checkbox"/> Reporting Server DB  | Database Pre-Deployments for App-V reporting.                           |

Warning: You must have sufficient permissions to install the App-V database components.

&lt; Previous

Next &gt;

Cancel

## Installation Location

[Help](#)

## Select Installation Location

Installation Location

&lt; Previous

Next &gt;

Cancel

Microsoft Application Virtualization (App-V) Server Setup

Configure

Help

### Create New Management Server Database

SQL Server instance

☐ Use the default instance

☒ Use a custom instance

Custom instance name

Management Server database

☒ Use the default configuration

☐ Use a custom configuration

Server database name

< Previous Next > Cancel

Microsoft Application Virtualization (App-V) Server Setup

Configure

Help

### Create New Management Server Database

Management Server Machine Account

☒ Use this local computer

☐ Use a remote computer

Remote Machine Account

Install Administrator Login

< Previous Next > Cancel

Microsoft Application Virtualization (App-V) Server Setup

Configure

Help

### Create New Reporting Database

SQL Server instance

☐ Use the default instance

☒ Use a custom instance

Custom instance name

Reporting Server database

☒ Use the default configuration

☐ Use a custom configuration

Server database name

< Previous Next > Cancel

Microsoft Application Virtualization (App-V) Server Setup

Configure

Help

### Create New Reporting Database

Reporting Server Machine Account

☒ Use this local computer

☐ Use a remote computer

Remote Machine Account

Install Administrator Login

< Previous Next > Cancel

## Configure

[Help](#)

## Management Server Configuration

Specify the active directory group or account that is authorized to manage App-V

RAMLAN\APPVADMINS

## Management Server Web Site Configuration

Website name

Microsoft App-V Management Service

Port binding

55555

&lt; Previous

Next &gt;

Cancel

## Configure

[Help](#)

## Publishing Server Configuration

Specify the management service to be used by this publishing server

http://localhost:55555/

## Publishing Server Web Site Configuration

Website name

Microsoft App-V Publishing Service

Port binding

55556

&lt; Previous

Next &gt;

Cancel

## Configure

[Help](#)

## Reporting Server Configuration

Website name

Microsoft App-V Reporting Service

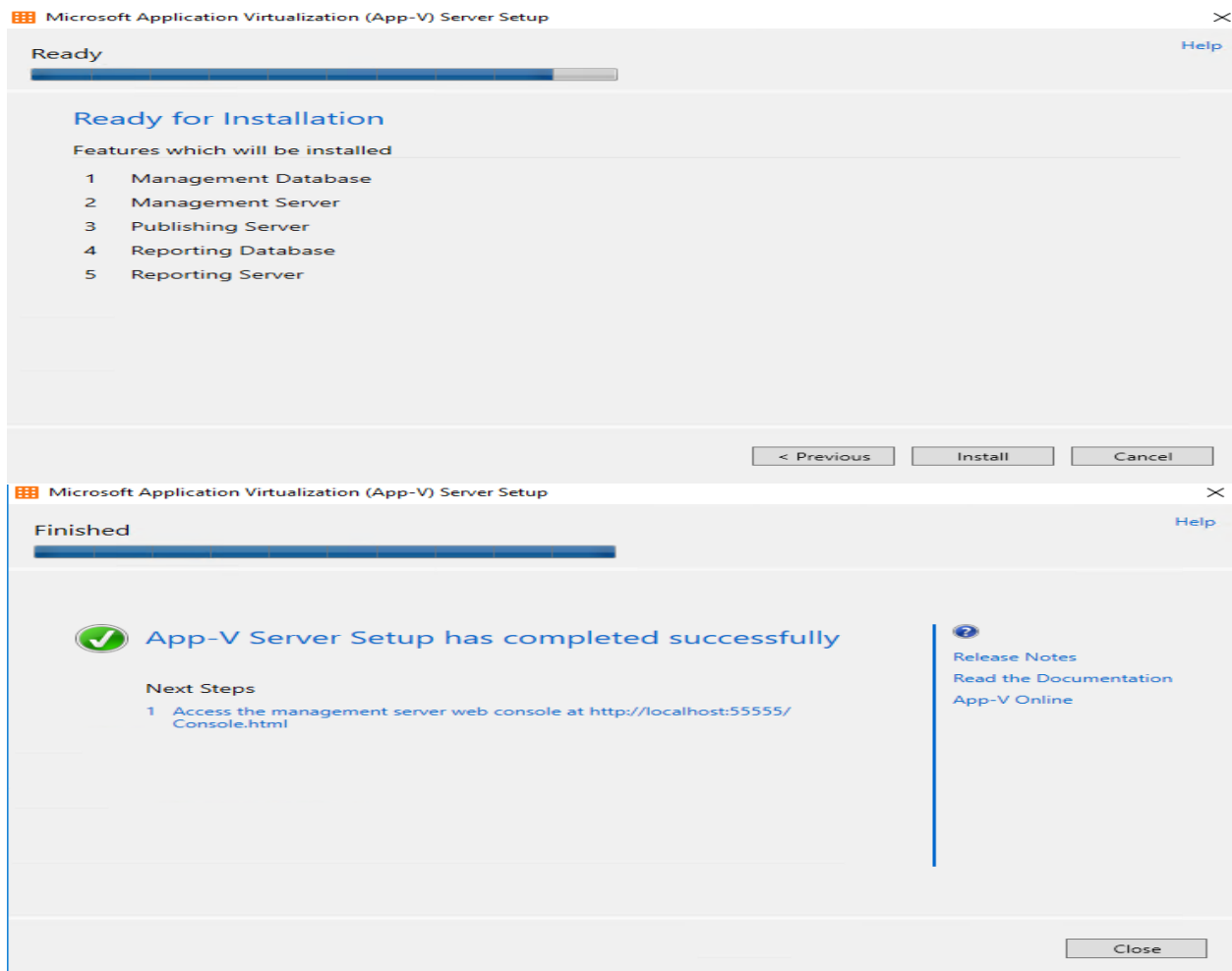
Port binding

55557

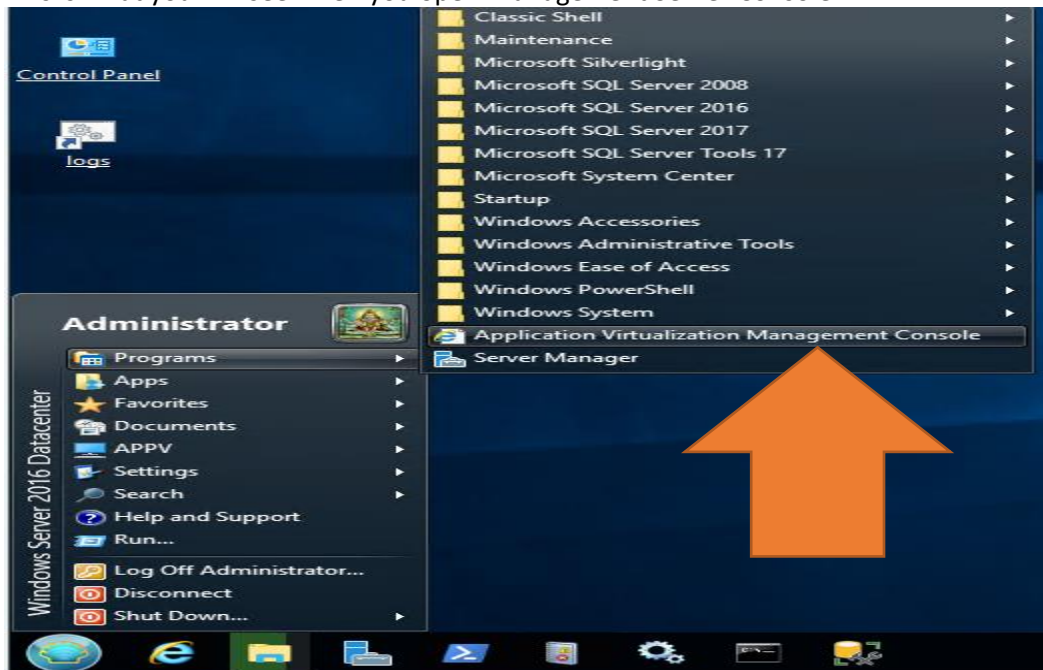
&lt; Previous

Next &gt;

Cancel



This is what you will see when you open Management Server Console



Application Virtualization - Internet Explorer

http://localhost:55555/Console/Packages

Application Virtualization

File Edit View Favorites Tools Help

Microsoft  
Application Virtualization

Help About Welcome Administrator

PACKAGES

CONNECTION GROUPS

SERVICES

ADMIN

## Packages

Entire Library | 0 Applications in 0 Packages

Filter and Search

Ungrouped

| <input type="checkbox"/> | Name | Version | Status | Last Modified |
|--------------------------|------|---------|--------|---------------|
|--------------------------|------|---------|--------|---------------|

Application Virtualization - Internet Explorer

http://localhost:55555/Console/ConnectionGroups

Application Virtualization

File Edit View Favorites Tools Help

Microsoft  
Application Virtualization

Help About Welcome Administrator

PACKAGES

CONNECTION GROUPS

SERVICES

ADMIN

## Connection Groups

Entire Library | 0

| <input type="checkbox"/> | Group | Version | Status | Priority |
|--------------------------|-------|---------|--------|----------|
|--------------------------|-------|---------|--------|----------|

Application Virtualization - Internet Explorer

http://localhost:55555/Console/Servers

Application Virtualization

File Edit View Favorites Tools Help

Microsoft  
Application Virtualization

Help About Welcome Administrator

PACKAGES

CONNECTION GROUPS

SERVICES

ADMIN

## Servers

Entire System | 1

| Server Name  | Last Publishing Attempt | Description |
|--------------|-------------------------|-------------|
| RAMLAN\APPV5 | 7/29/2018 4:35:40 PM    |             |

Application Virtualization - Internet Explorer

http://localhost:55555/Console/Admin

Application Virtualization

File Edit View Favorites Tools Help

Microsoft  
Application Virtualization

Help About Welcome Administrator

PACKAGES

CONNECTION GROUPS

SERVICES

ADMIN

## Administrators

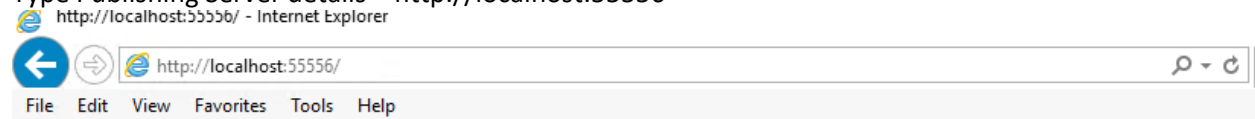
All Administrators | Administrators : 3

| Domain | Name          | Type  |
|--------|---------------|-------|
| RAMLAN | AppVAdmins    | Group |
| RAMLAN | ADMINISTRATOR | User  |
| RAMLAN | ram           | User  |

So our Management Server is working fine. I want to make sure the Publishing Server is also fine – reason being all the sequenced apps will be delivered through Publishing Server. The steps are as follows:

Open Internet Explorer

Type Publishing Server details – <http://localhost:55556>



If you see above information, then the Publishing Server is working fine.

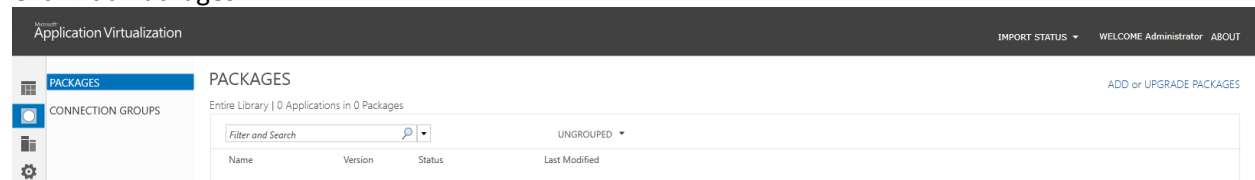
Publishing the sequenced application:

I had sequenced few apps before. I will be using those apps for publishing. They are all stored in Content folder on App-V Server. For this exercise, I am going to publish Adobe Reader 11.

> APPV > OS (C:) > Content >

| Name                              | Date modified                        | Type                        | Size |
|-----------------------------------|--------------------------------------|-----------------------------|------|
| <a href="#">7zip</a>              | <a href="#">29-Jul-2018 8:47 AM</a>  | <a href="#">File folder</a> |      |
| <a href="#">Adobe Reader 11</a>   | <a href="#">29-Jul-2018 8:47 AM</a>  | <a href="#">File folder</a> |      |
| <a href="#">DU Meter</a>          | <a href="#">29-Jul-2018 8:47 AM</a>  | <a href="#">File folder</a> |      |
| <a href="#">FireFox</a>           | <a href="#">29-Jul-2018 8:47 AM</a>  | <a href="#">File folder</a> |      |
| <a href="#">iTunes</a>            | <a href="#">29-Jul-2018 8:48 AM</a>  | <a href="#">File folder</a> |      |
| <a href="#">KMPlayer</a>          | <a href="#">29-Jul-2018 8:48 AM</a>  | <a href="#">File folder</a> |      |
| <a href="#">MBSA 2.2</a>          | <a href="#">29-Jul-2018 8:48 AM</a>  | <a href="#">File folder</a> |      |
| <a href="#">Notepad++</a>         | <a href="#">29-Jul-2018 8:48 AM</a>  | <a href="#">File folder</a> |      |
| <a href="#">Office 2013 App-V</a> | <a href="#">11-Dec-2016 3:11 ...</a> | <a href="#">File folder</a> |      |
| <a href="#">Safari</a>            | <a href="#">29-Jul-2018 8:52 AM</a>  | <a href="#">File folder</a> |      |
| <a href="#">VLC</a>               | <a href="#">29-Jul-2018 8:52 AM</a>  | <a href="#">File folder</a> |      |
| <a href="#">WinRAR</a>            | <a href="#">29-Jul-2018 8:52 AM</a>  | <a href="#">File folder</a> |      |
| <a href="#">Winzip11</a>          | <a href="#">29-Jul-2018 8:47 AM</a>  | <a href="#">File folder</a> |      |

Click Add Packages




## ADD or UPGRADE PACKAGES

To import a package specify a UNC or HTTP path. Separate multiple files with semicolons.


If you get this error when adding APPV package – install this KB3168628 and restart the server.

### PACKAGE IMPORT

 AdobeReader11 Not Added

An unexpected error occurred while retrieving the package at \\appv\Content\Adobe Reader 11\AdobeReader11.appv. Please ensure that it exists and that the package's file permissions allow the management service to access it.

APPV > Downloads

| Name  | Date modified        | Type        | Size     |
|---|----------------------|-------------|----------|
|  AppV5.1RTM Server KB3168628.exe | 22-Sep-2016 1:47 ... | Application | 4,299 KB |

Now try to add APPV package.






Successfully added package Adobe Reader 11.

Now we publish the package

### Packages

Entire Library | 2 Applications in 1 Packages

Filter and Search   Ungrouped 

| <input type="checkbox"/>            | Name            | Version | Status      | Last Modified        |
|-------------------------------------|-----------------|---------|-------------|----------------------|
| <input checked="" type="checkbox"/> | Adobe Reader 11 | 0.0.0.1 | Unpublished | 7/29/2018 4:44:38 PM |




[Add or Upgrade](#) [Publish](#) [Unpublish](#) [Delete](#)

Now we will edit AD Access

Microsoft  
Application Virtualization

**Packages**

Entire Library | 2 Applications in 1 Packages

Filter and Search   Ungrouped 

| <input type="checkbox"/>            | Name            | Version | Status      | Last Modified        |
|-------------------------------------|-----------------|---------|-------------|----------------------|
| <input checked="" type="checkbox"/> | Adobe Reader 11 | 0.0.0.1 | Unpublished | 7/29/2018 4:46:19 PM |

- Unpublish
- Edit AD Access
- Edit Deployment Configuration
- Transfer deployment configuration from...
- Transfer access and configurations from...
- Delete



Now add AD group

Microsoft  
Application Virtualization

**AD Access**

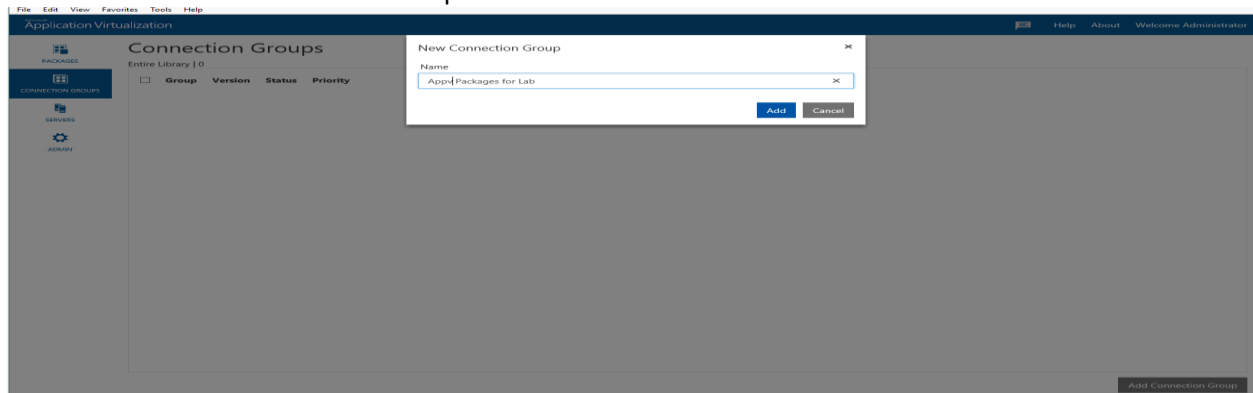
Adobe Reader 11

Active Directory Groups: 2

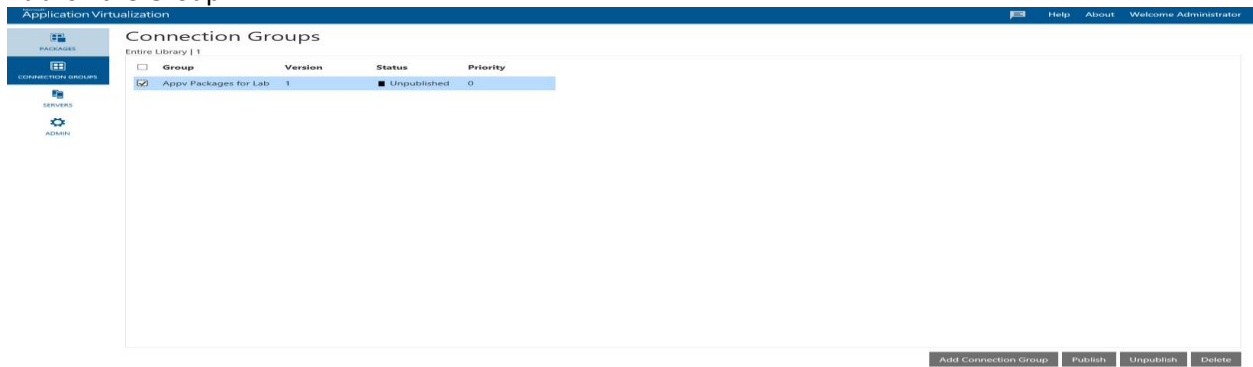
| <input type="checkbox"/> | AD Entities with Access | Assigned Configuration  |
|--------------------------|-------------------------|---|
| <input type="checkbox"/> | RAMLANAppvAdmins        | Default  |
| <input type="checkbox"/> | RAMLANAppvUsers         | Default  |

[Edit Deployment Configuration](#) [Add AD Group](#)

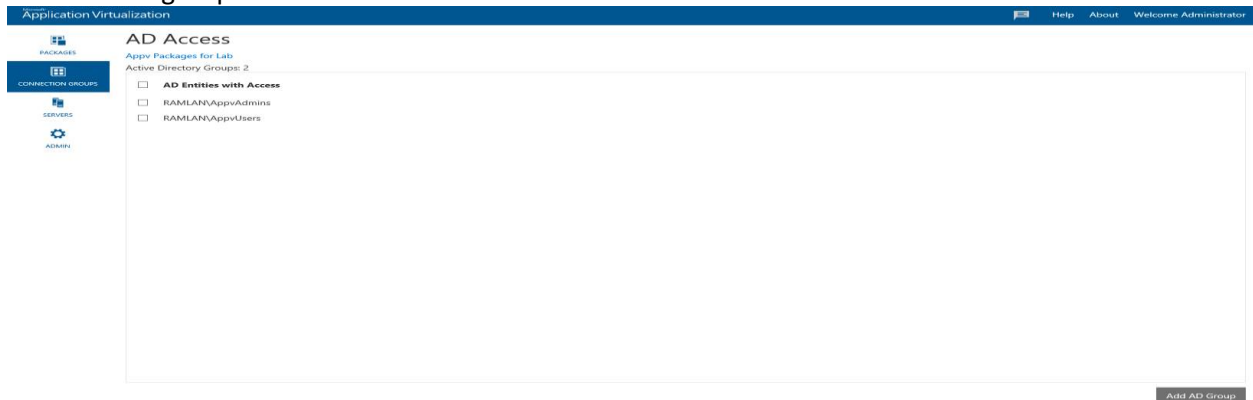
## Now we will create Connection Group



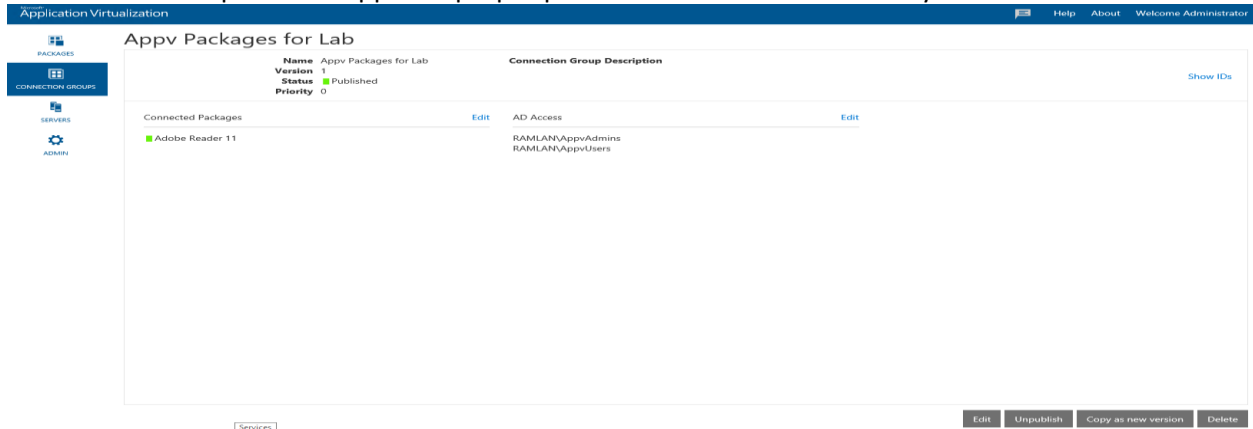
## Publish the Group



## Now add AD group



## Now we have the published app with proper permission for install on client system



Will create a GPO to deploy Publishing Server for all clients. For this we need to download MDOP ADMX template and copy APPV files to central repository. After that create a GPO and link to your domain.

## Computer Configuration\Policies\Administrative Templates\System\App-V\Publishing\Publishing Server 1 Setting

| Setting                      | State          | Comment |
|------------------------------|----------------|---------|
| Enable Publishing Refresh UX | Not configured | No      |
| Publishing Server 1 Settings | Enabled        | No      |

**Publishing Server 1 Settings**

Previous Setting

Next Setting

☐ Not Configured

Comment:

☒ Enabled

Supported on:

At least Windows Server 2008 R2 or Windows 7

☐ Disabled

Options:

Help:

Publishing Server Display Name

Home Lab Publishing Server Info

Publishing Server URL

http://appv.ramlan.ca:55556

Global Publishing Refresh

True

Global Publishing Refresh On Logon

True

Global Publishing Refresh Interval

1

Global Publishing Refresh Interval Unit

Hour

Publishing Server Display Name: Displays the name of publishing server.

Publishing Server URL: Displays the URL of publishing server.

Global Publishing Refresh: Enables global publishing refresh (Boolean).

Global Publishing Refresh On Logon: Triggers a global publishing refresh on logon (Boolean).

Global Publishing Refresh Interval: Specifies the publishing refresh interval using the GlobalRefreshIntervalUnit. To disable package refresh, select 0.

Global Publishing Refresh Interval Unit: Specifies the interval unit (Hour 0-23, Day 0-31).

User Publishing Refresh: Enables user publishing refresh (Boolean).

OK

Cancel

Apply

**Publishing Server 1 Settings**

Previous Setting

Next Setting

☐ Not Configured

Comment:

☒ Enabled

Supported on:

At least Windows Server 2008 R2 or Windows 7

☐ Disabled

Options:

Help:

Global Publishing Refresh Interval

1

Global Publishing Refresh Interval Unit

Hour

User Publishing Refresh

True

User Publishing Refresh On Logon

True

User Publishing Refresh Interval

1

User Publishing Refresh Interval Unit

Hour

Global Publishing Refresh Interval: Specifies the publishing refresh interval using the GlobalRefreshIntervalUnit. To disable package refresh, select 0.

Global Publishing Refresh Interval Unit: Specifies the interval unit (Hour 0-23, Day 0-31).

User Publishing Refresh: Enables user publishing refresh (Boolean).

User Publishing Refresh On Logon: Triggers a user publishing refresh on logon (Boolean).

User Publishing Refresh Interval: Specifies the publishing refresh interval using the UserRefreshIntervalUnit. To disable package refresh, select 0.

User Publishing Refresh Interval Unit: Specifies the interval unit (Hour 0-23, Day 0-31).

OK

Cancel

Apply

If you are using the Office 2016 App-V Package, make sure you enable Package Scripts in the App-V GPO

Setting State Comment

Enable Package Scripts Not configured No

Enable Package Scripts

Previous Setting Next Setting

☐ Not Configured Comment:

☒ Enabled

☐ Disabled

Supported on: At least Windows Server 2008 R2 or Windows 7

Options:

Help: Enables scripts defined in the package manifest of configuration files that should run.

OK Cancel Apply

Open Command Prompt and run GPUPDATE /FORCE. After that open PowerShell and run Get-AppvPublishingServer. In our case the GPO is published and it is working.

```
Administrator: Windows PowerShell
Windows PowerShell
Copyright (C) 2016 Microsoft Corporation. All rights reserved.

PS C:\Users\Administrator> Get-AppvPublishingServer

Id                : 1
SetByGroupPolicy  : True
Name              : Home Lab Publishing Server Info
URL               : http://appv.ramlan.ca:55556
GlobalRefreshEnabled : True
GlobalRefreshOnLogon : True
GlobalRefreshInterval : 1
GlobalRefreshIntervalUnit : Hour
UserRefreshEnabled : True
UserRefreshOnLogon : True
UserRefreshInterval : 1
UserRefreshIntervalUnit : Hour

PS C:\Users\Administrator>
```

## APPV CLIENT DEPLOYMENT TO WORKSTATIONS:

Now it is time to deploy APPV client to workstations using CB1802. The details are as follows:

<https://msitproblog.com/2016/03/23/install-app-v-5-1-client-hotfix-configmgr-1602/>

Create a folder called App V client 5.1 on CB1802 Server

Copy APPV client from MDOP ISO

Copy KB4014009 to the folder

Open Notepad and paste this command and save it as .cmd file




appv\_client\_setup.exe /q /norestart /ACCEPTEULA /log "C:\Windows\Logs\App-V51\_Client\_Install.log"

AppV5.1RTM\_Client\_KB4014009.exe /q /norestart /ACCEPTEULA /log C:\Windows\Logs\App-

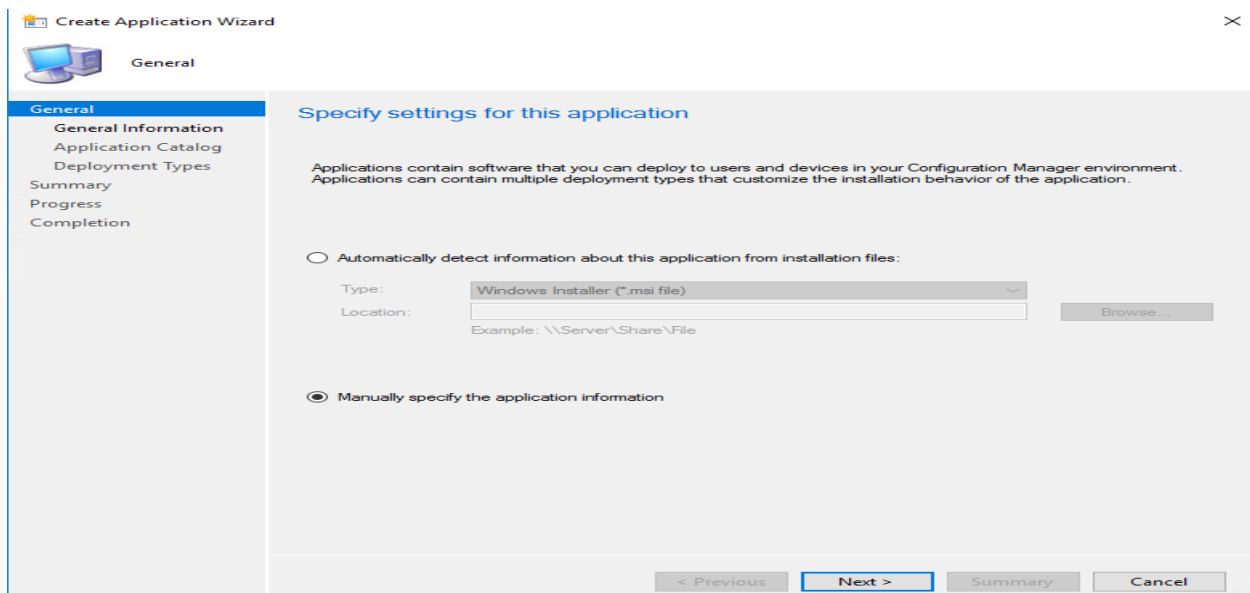
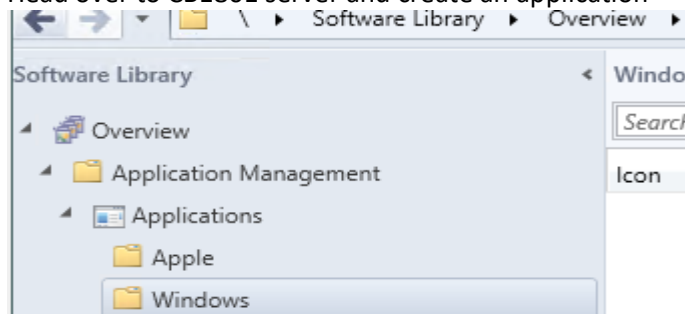
V51\_Client\_HF02\_Install.log

Your folder should look like this

CM > Local Disk (C:) > Sources > Application > App V Client 5.1


| Name  | Date modified         | Type             | Size      |
|---|-----------------------|------------------|-----------|
|  appv_client_setup.exe           | 22-Jul-2015 10:39 ... | Application      | 64,022 KB |
|  AppV5.1RTM_Client_KB4014009.exe | 03-Apr-2017 4:36 ...  | Application      | 40,552 KB |
|  Install Wrapper.cmd             | 03-Apr-2017 4:43 ...  | Windows Comma... | 1 KB      |

Head over to CB1801 server and create an application



Create Application Wizard

×



General Information

General

General Information

Application Catalog

Deployment Types

Summary

Progress

Completion

Specify information about this application

Name:

APPV Client 5.1 SP1

Administrator comments:

Publisher:

Microsoft

Software version:

1.0

Optional reference:

Administrative categories:

Select...

☐ Date published:

30-Jul-2018

Specify the administrative users who are responsible for this application.

Owners:

ADMINISTRATOR

Browse...

Support contacts:

ADMINISTRATOR

Browse...

< Previous


Next >

Summary

Cancel

Create Application Wizard

×



Application Catalog

General

General Information

Application Catalog

Deployment Types

Summary

Progress

Completion

Specify the Configuration Manager Application Catalog entry

Specify information about how you want to display this application to users when they browse the Application Catalog. To provide information in a specific language, select the language before you enter a description.

Selected language:

English (Canada) default

Add/Remove...

Localized application name:

APPV Client 5.1 SP1

User categories:

Edit...

User documentation:

Browse...

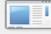
Link text:

Privacy URL:

Localized description:

Keywords:

Icon:



Browse...

☐ Display this as a featured app and highlight it in the company portal

< Previous

Next >

Summary

Cancel

Create Application Wizard

Deployment Types

General

General Information

Application Catalog

Deployment Types

Summary

Progress

Completion

Configure deployment types and the priority in which they will be applied for this application

Deployment types include information about the installation method and the source files for this application.

Deployment types: 

Increase Priority

Decrease Priority

Filter...

| Priority                                 | Name | Type | Languages |
|--|------|------|-----------|
| There are no items to show in this view. |      |      |           |

Add...

Edit...

Copy

Delete

< Previous

Next >

Summary

Cancel

Create Deployment Type Wizard

General

General

General Information

Content

Detection Method

User Experience

Requirements

Dependencies

Summary

Progress

Completion

Specify settings for this deployment type

Deployment types include information about the installation method and source files for this application.

Type: 

Script Installer

Automatically identify information about this deployment type from installation files

Location: 

Browse...

Example: \\Server\Share\File

Manually specify the deployment type information

< Previous

Next >

Summary

Cancel



## General Information

## General

## General Information

## Content

Detection Method

User Experience

Requirements

Dependencies

Summary

Progress

Completion

## Specify general information for this deployment type

Applications can have any number of deployment types. Deployment types include links to content and settings that specify how the content is delivered.

Name: Appv client 5.1 for workstations

Administrator comments:

Languages:

Select...

&lt; Previous

Next &gt;

Summary

Cancel



## Content

## General

## General Information

## Content

Detection Method

User Experience

Requirements

Dependencies

Summary

Progress

Completion

## Specify information about the content to be delivered to target devices

Specify the location of the deployment type's content and other settings that control how content is delivered to target devices. All the contents in the path specified will be delivered.

Content location: \\cm\Sources\Application\App V Client 5.1

Browse...

☐ Persist content in the client cache

Specify the command used to install this content.

Installation program: "Install\_Wrapper.cmd"

Browse...

Installation start in:

Configuration Manager can remove installations of this content if an uninstall program is specified below.

Uninstall program:

Browse...

Uninstall start in:

☐ Run installation and uninstall program as 32-bit process on 64-bit clients.

&lt; Previous

Next &gt;

Summary

Cancel



## Detection Method

## General

General Information

Content

Detection Method

User Experience

Requirements

Dependencies

Summary

Progress

Completion

## Specify how this deployment type is detected

Specify how Configuration Manager determines whether this deployment type is already present on a device. This detection occurs before the content is installed or when software inventory data is collected.

☒ Configure rules to detect the presence of this deployment type:

| Connector | ( | Clause | ) |
|-----------|---|--------|---|
|           |   |        |   |

Add Clause...

Edit Clause...

Delete Clause

Group

Ungroup

☐ Use a custom script to detect the presence of this deployment type:

Script type:

Script length:

Edit...

&lt; Previous

Next &gt;

Summary

Cancel

## Detection Rule



Create a rule that indicates the presence of this application.

Setting Type:

File System

Specify the file or folder to detect this application.

Type:

File

Path:

%ProgramFiles%\Microsoft Application Virtualization\Client

Browse...

File or folder name:

AppvClient.exe

☒ This file or folder is associated with a 32-bit application on 64-bit systems.

☐ The file system setting must exist on the target system to indicate presence of this application

☒ The file system setting must satisfy the following rule to indicate the presence of this application

Property:

Version

Operator:

Greater than or equal to

Value:


5.1.118.0

OK

Cancel

Create Deployment Type Wizard

×

Detection Method

General

General Information

Content

**Detection Method**

User Experience

Requirements

Dependencies

Summary

Progress

Completion

Specify how this deployment type is detected

Specify how Configuration Manager determines whether this deployment type is already present on a device. This detection occurs before the content is installed or when software inventory data is collected.

☒ Configure rules to detect the presence of this deployment type:

|   | Connector | ( | Clause   | ) |
|---|-----------|---|--|---|
| ▶ |           |   | AppvClient.exe.Version GreaterEquals 5.1.118.0 |   |

Add Clause...

Edit Clause...

Delete Clause

Group

Ungroup

Edit...

☐ Use a custom script to detect the presence of this deployment type:

Script type:

Script length:

< Previous


Next >

Summary

Cancel

Create Deployment Type Wizard

×

User Experience

General

General Information

Content

Detection Method

**User Experience**

Requirements

Dependencies

Summary

Progress

Completion

Specify user experience settings for the application

Installation behavior:

Logon requirement:

Installation program visibility:

☐ Allow users to view and interact with the program installation

---

Specify the maximum run time and estimated installation time of the deployment program for this application. The estimated installation time displays to the user when the application installs.

Maximum allowed run time (minutes):

Estimated installation time (minutes):

< Previous

**Next >**

Summary

Cancel



## Requirements

## General

- General Information
- Content
- Detection Method
- User Experience
- Requirements**
- Dependencies
- Summary
- Progress
- Completion

## Specify installation requirements for this deployment type

Specify any requirements, such as hardware features or the operating system version, that devices must have before they can install this deployment type. Configuration Manager verifies that these requirements are met before content is deployed to the device.

Requirements:

| Filter...                                |          |        |
|--|----------|--------|
| Requirement Type                         | Operator | Values |
| There are no items to show in this view. |          |        |

Add...

Edit...

Delete

&lt; Previous

Next &gt;

Summary

Cancel



## Requirements

## General

- General Information
- Content
- Detection Method
- User Experience
- Requirements**
- Dependencies
- Summary
- Progress
- Completion

## Specify installation requirements for this deployment type

Specify any requirements, such as hardware features or the operating system version, that devices must have before they can install this deployment type. Configuration Manager verifies that these requirements are met before content is deployed to the device.

Requirements:

| Filter...             |                          |   |
|-----------------------|--------------------------|---|
| Requirement Type      | Operator                 | Values  |
| CPU speed             | Greater than or equal to | 1400 MHz  |
| Operating system      | One of                   | {All Windows 7 (64-bit), All Windows 7 (32-bit), Windows 7 (64-bit) |
| Total physical memory | Greater than or equal to | 1000 MB   |

Add...

Edit...

Delete

&lt; Previous

Next &gt;

Summary

Cancel



## Dependencies

## General

- General Information
- Content
- Detection Method
- User Experience
- Requirements
- Dependencies**
- Summary
- Progress
- Completion

## Specify software dependencies for this deployment type

Software dependencies are deployment types that must be installed before this deployment type can be installed.

Software dependencies:

| Name | Application | Deployment Type | Automatically Install |
|------|-------------|-----------------|-----------------------|
|      |             |                 |                       |

Add...

Edit...

Delete

&lt; Previous

Next &gt;

Summary

Cancel



## Summary

## General

- General Information
- Content
- Detection Method
- User Experience
- Requirements
- Dependencies
- Summary**
- Progress
- Completion

## Confirm the settings for this deployment type

Details:

## General Information:

- Name: Appv client 5.1 for workstations
- Technology: Script Installer
- Administrator comments:
- Languages:

## Content:

- Content location: \\cm\Sources\Application\App V Client 5.1
- Persist in client cache: No
- Installation program: "Install\_Wrapper.cmd"
- Installation start in:

## Detection Method:

## User Experience:

- Installation behavior: Install for system
- Login requirement: Whether or not a user is logged on
- Installation priority: Hidden
- Allow users to interact with this program: No
- Maximum allowed run time (minutes): 30
- Estimated install time (minutes): 0

## Requirements:

- CPU speed: Greater than or equal to 1400 MHz
- Operating system: One of {All Windows 7 (64-bit), All Windows 7 (32-bit), Windows 7 (64-bit), Windows 7 SP1 (64-bit), Windows 7 (32-bit), Windows 7 SP1 (32-bit), All Windows RT, All Windows 8 (64-bit), All Windows 8 (32-bit), All Windows RT 8.1, All Windows 8.1 (64-bit), All Windows 8.1 (32-bit), All Windows Server 2016 (64-bit)}
- Total physical memory: Greater than or equal to 1000 MB

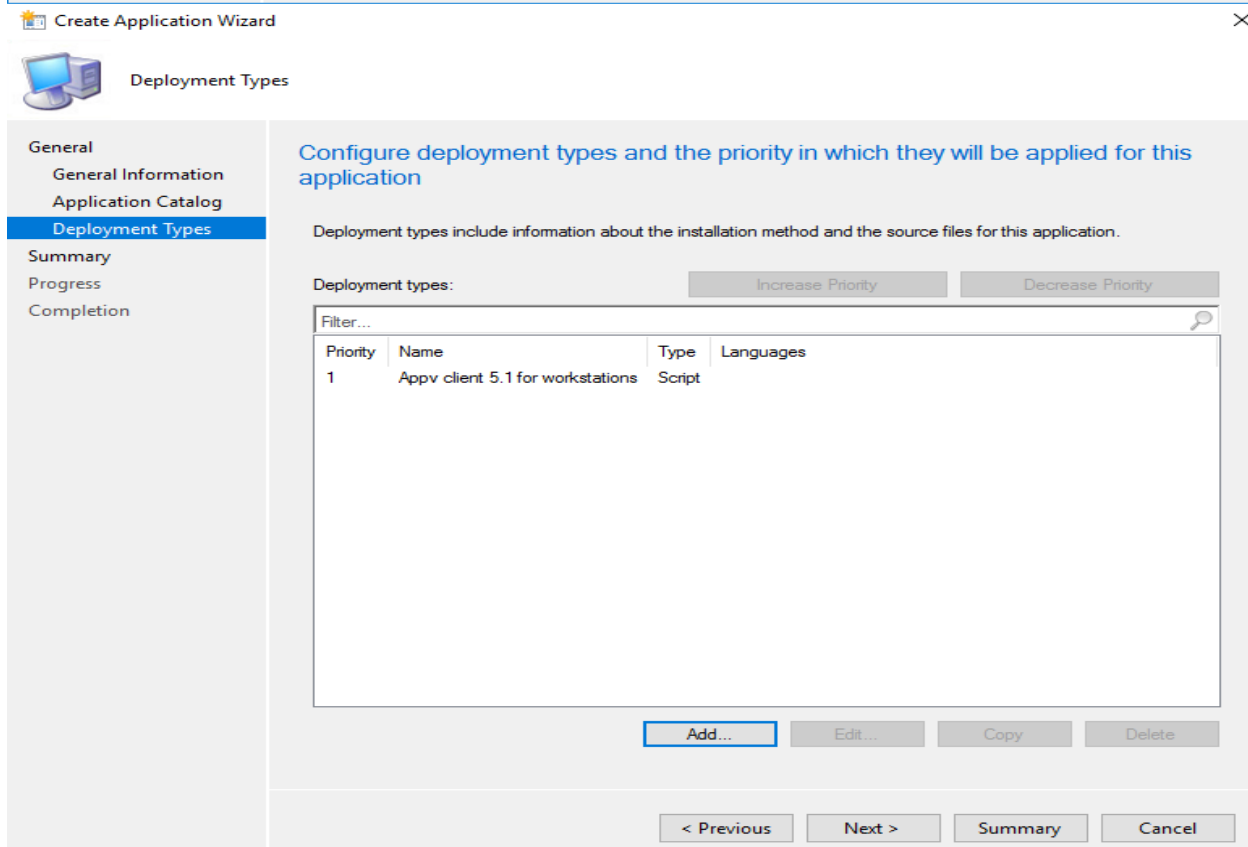
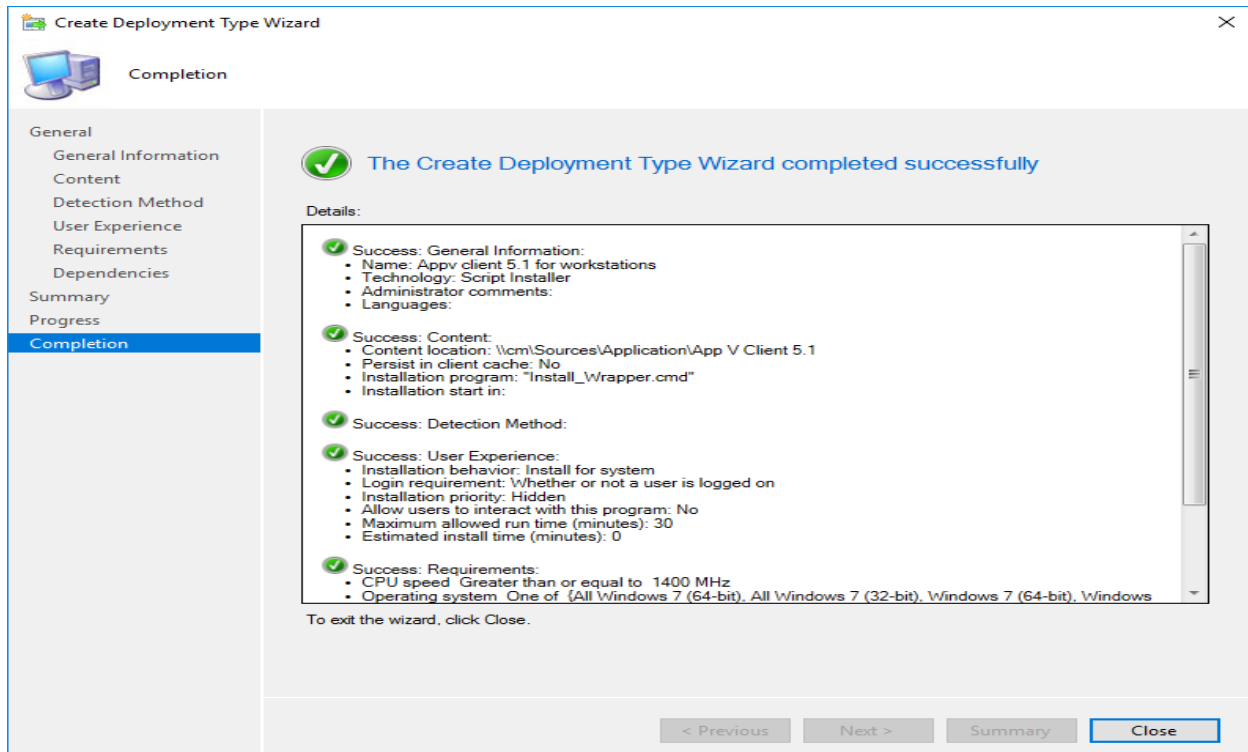
To change these settings, click Previous. To apply the settings, click Next.

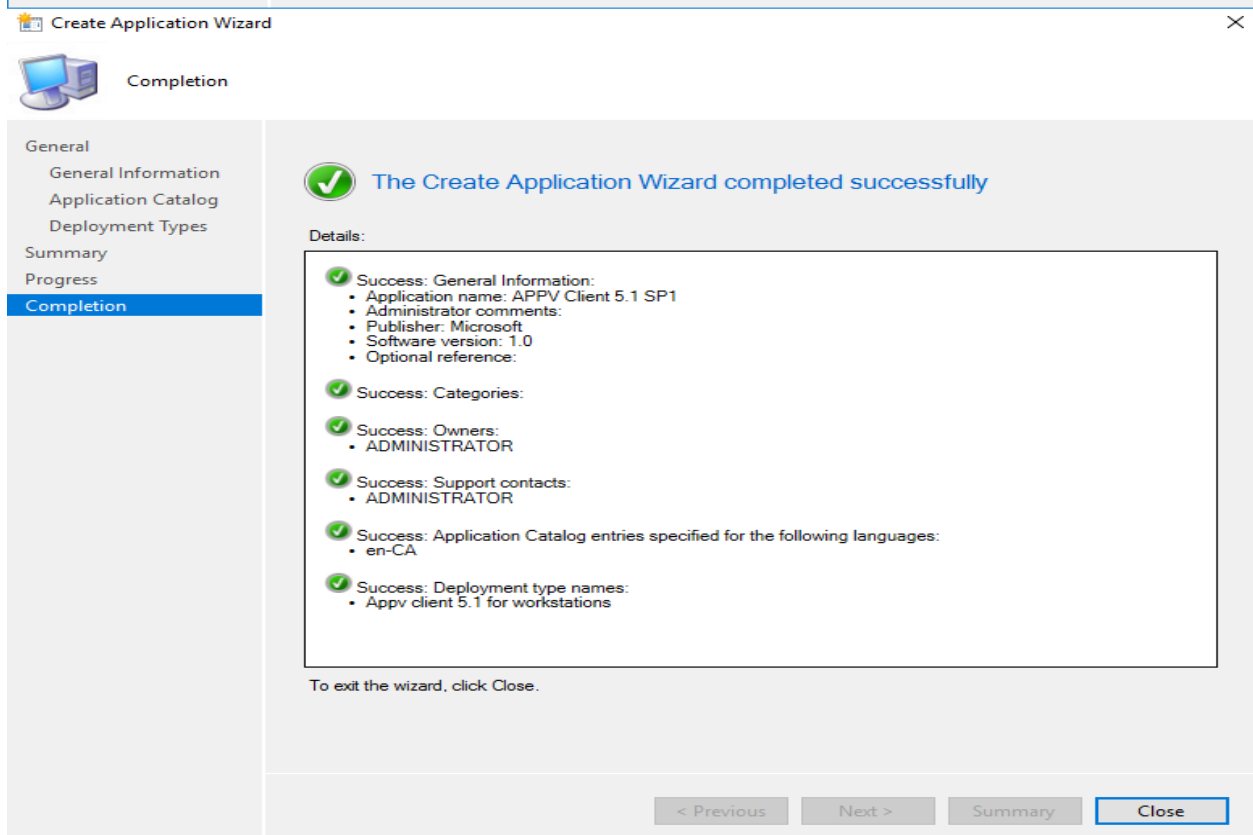
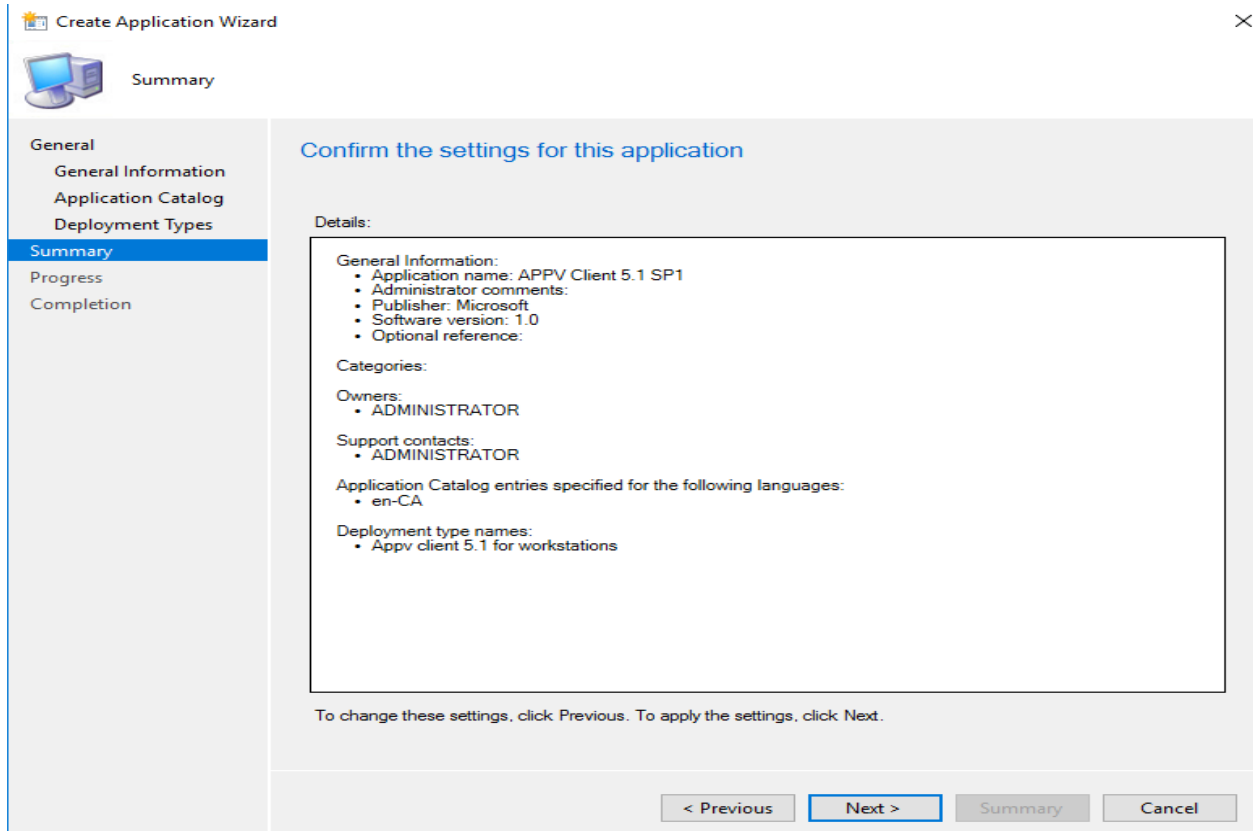
&lt; Previous

Next &gt;

Summary

Cancel





## Now deploy the application to device collection

➔ Deploy Software Wizard



### General

#### General

- Content
- Deployment Settings
- Scheduling
- User Experience
- Alerts
- Summary
- Progress
- Completion

### Specify general information for this deployment

Software:

Collection:

☐ Use default distribution point groups associated to this collection

☒ Automatically distribute content for dependencies

Comments (optional):

➔ Deploy Software Wizard



### Content

#### General

- Content
- Deployment Settings
- Scheduling
- User Experience
- Alerts
- Summary
- Progress
- Completion

### Specify the content destination

Distribution points or distribution point groups that the content has been distributed to:

| Name                                     | Type |
|--|------|
| There are no items to show in this view. |      |

Additional distribution points, distribution point groups, and the distribution point groups that are currently associated with collections to distribute content to:

| Filter...     |                          |              |  |
|---------------|--------------------------|--------------|--|
| Name          | Description              | Associations |  |
| CM_RAMLAN.CA  | Distribution point       |              |  |
| CM2_RAMLAN.CA | Distribution point       |              |  |
| All DP in Lab | Distribution point group | 0            |  |



## Deployment Settings

General

Content

Deployment Settings

Scheduling

User Experience

Alerts

Summary

Progress

Completion

## Specify settings to control how this software is deployed

Action: Purpose: 

- ☐ Pre-deploy software to the user's primary device
- ☐ Send wake-up packets
- ☐ Allow clients on a metered Internet connection to download content after the installation deadline, which might incur additional costs

&lt; Previous

Next &gt;

Summary

Cancel



## Scheduling

General

Content

Deployment Settings

Scheduling

User Experience

Alerts

Summary

Progress

Completion

## Specify the schedule for this deployment

This application will be available as soon as it has been distributed to the content server(s) unless it is scheduled for a later time below. Specify the installation deadline if this is a required application. This deadline is when the application must be installed on the device, including a system restart if necessary.

Time based on: ☐ Schedule the application to be available at: 

Installation deadline:

☒ As soon as possible after the available time☐ Schedule at: 

☐ Delay enforcement of this deployment according to user preferences, up to the grace period defined in client settings.


&lt; Previous

Next &gt;

Summary

Cancel

Deploy Software Wizard

User Experience

General

Content

Deployment Settings

Scheduling

User Experience

Alerts

Summary

Progress

Completion

Specify the user experience for the installation of this software on the selected devices

Specify user experience setting for this deployment

User notifications: 

Display in Software Center and show all notifications

When the installation deadline is reached, allow the following activities to be performed outside the maintenance window:

☐ Software Installation

☐ System restart (if required to complete the installation)

Write filter handling for Windows Embedded devices

☒ Commit changes at deadline or during a maintenance window (requires restarts)

If this option is not selected, content will be applied on the overlay and committed later.


< Previous

Next >

Summary

Cancel

Deploy Software Wizard

Alerts

General

Content

Deployment Settings

Scheduling

User Experience

Alerts

Summary

Progress

Completion

Specify Configuration Manager and Operations Manager alert options

Configuration Manager generates alerts when this application is deployed.

Threshold for successful deployment

☐ Create a deployment alert when the threshold is lower than the following:

Percent success: 

1

After: 

06-Aug-2018

10:10 AM

Threshold for failed deployment

☐ Create a deployment alert when the threshold is higher than the following:

Percent failure: 

0

Enable System Center Operations Manager maintenance mode if you want Operations Manager to generate alerts when this application is deployed.

☐ Enable System Center Operations Manager maintenance mode

☐ Generate System Center Operations Manager alert when a software installation fails

< Previous

Next >

Summary

Cancel



## Summary

## General

Content

Deployment Settings

Scheduling

User Experience

Alerts

Summary

Progress

Completion

## Confirm the settings for this new deployment

## Details:

## General

- Software: APPV Client 5.1 SP1
- Collection: AppV Clients (Member Count: 12)
- Use default distribution point groups associated to this collection: Disabled
- Automatically distribute content for dependencies: Enabled

## Deployment Settings

- Action: Install
- Purpose: Required
- Pre-deploy software to the user's primary device: Disabled
- Send wake-up packets: Disabled
- Allow clients to use a metered Internet connection to download content: Disabled

## Application Settings (retrieved from application in software library)

- Application Name: APPV Client 5.1 SP1
- Application Version: 1.0
- Application Deployment Types: Script Installer

## Scheduling

- Time based on: UTC
- Available Time: As soon as possible
- Deadline Time: Disabled
- Delayed enforcement on deployment: Disabled

## User Experience

- User notifications: Display in Software Center and show all notifications
- Ignore Maintenance Windows: Disabled
- System restart (if required to complete the installation): Disabled
- Commit changes at deadline or during a maintenance window (requires restarts): Enabled

To change these settings, click Previous. To apply the settings, click Next.

&lt; Previous

Next &gt;

Summary

Cancel



## Completion

## General

Content

Deployment Settings

Scheduling

User Experience

Alerts

Summary

Progress

Completion



## The Deploy Software Wizard completed successfully

## Details:



## Success: General

- Software: APPV Client 5.1 SP1
- Collection: AppV Clients (Member Count: 12)
- Use default distribution point groups associated to this collection: Disabled
- Automatically distribute content for dependencies: Enabled



## Success: Deployment Settings

- Action: Install
- Purpose: Required
- Pre-deploy software to the user's primary device: Disabled
- Send wake-up packets: Disabled
- Allow clients to use a metered Internet connection to download content: Disabled



## Success: Application Settings (retrieved from application in software library)

- Application Name: APPV Client 5.1 SP1
- Application Version: 1.0
- Application Deployment Types: Script Installer



## Success: Scheduling

- Time based on: UTC
- Available Time: As soon as possible
- Deadline Time: Disabled
- Delayed enforcement on deployment: Disabled



## Success: User Experience

To exit the wizard, click Close.

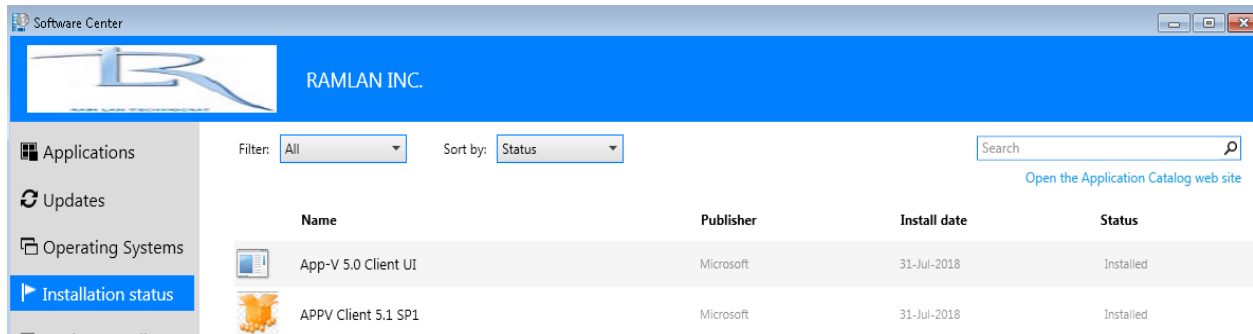
&lt; Previous

Next &gt;

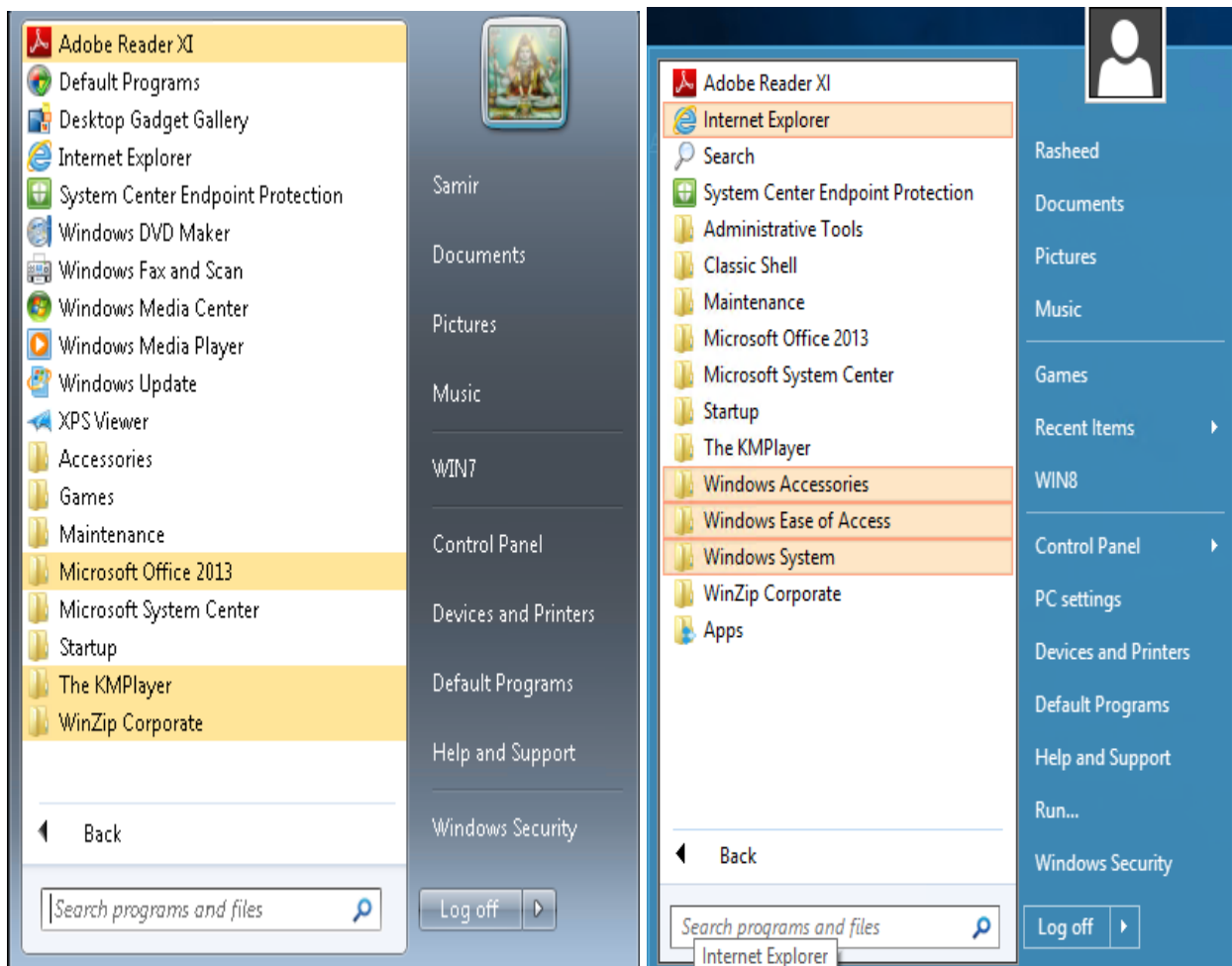
Summary

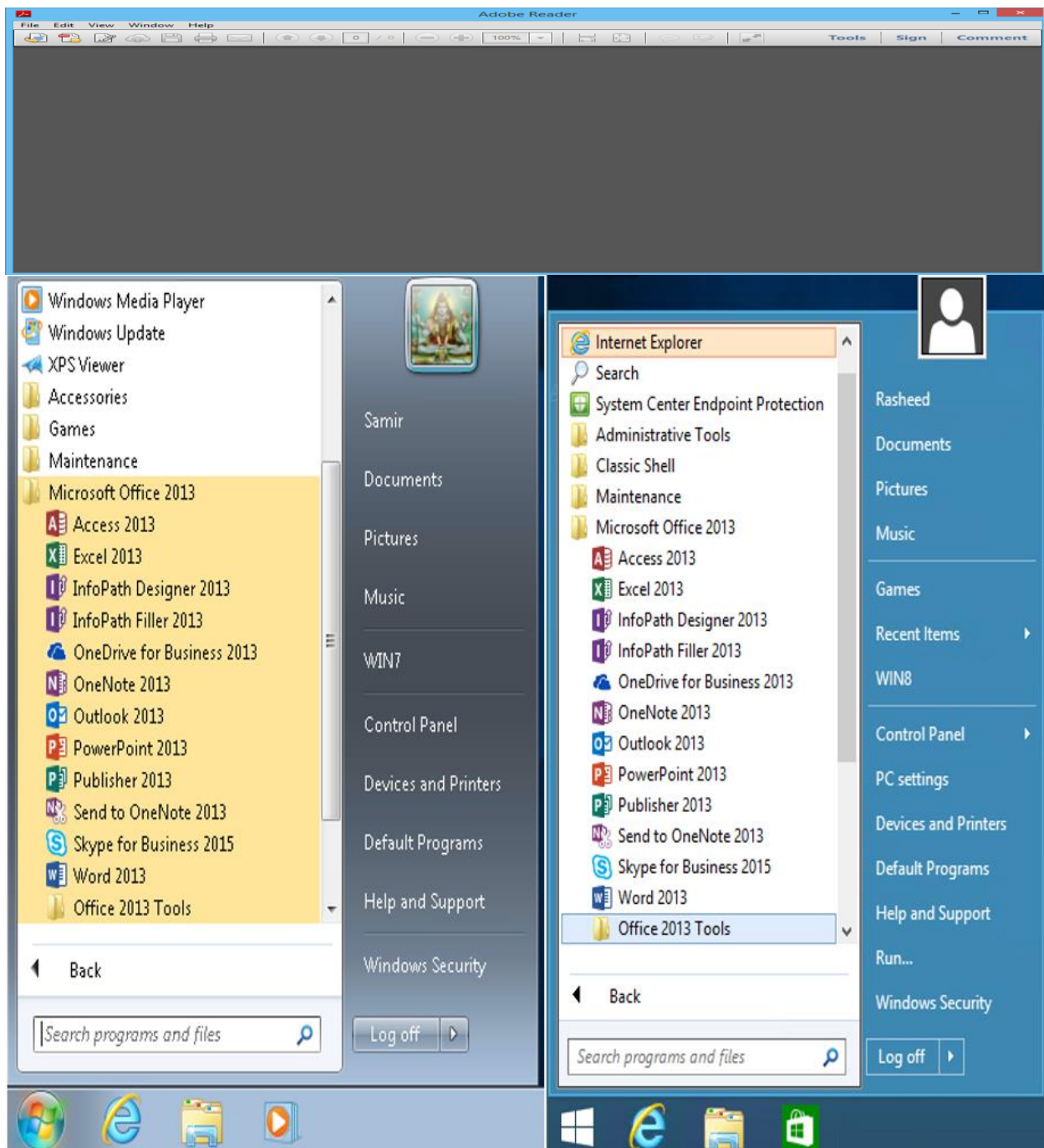
Close

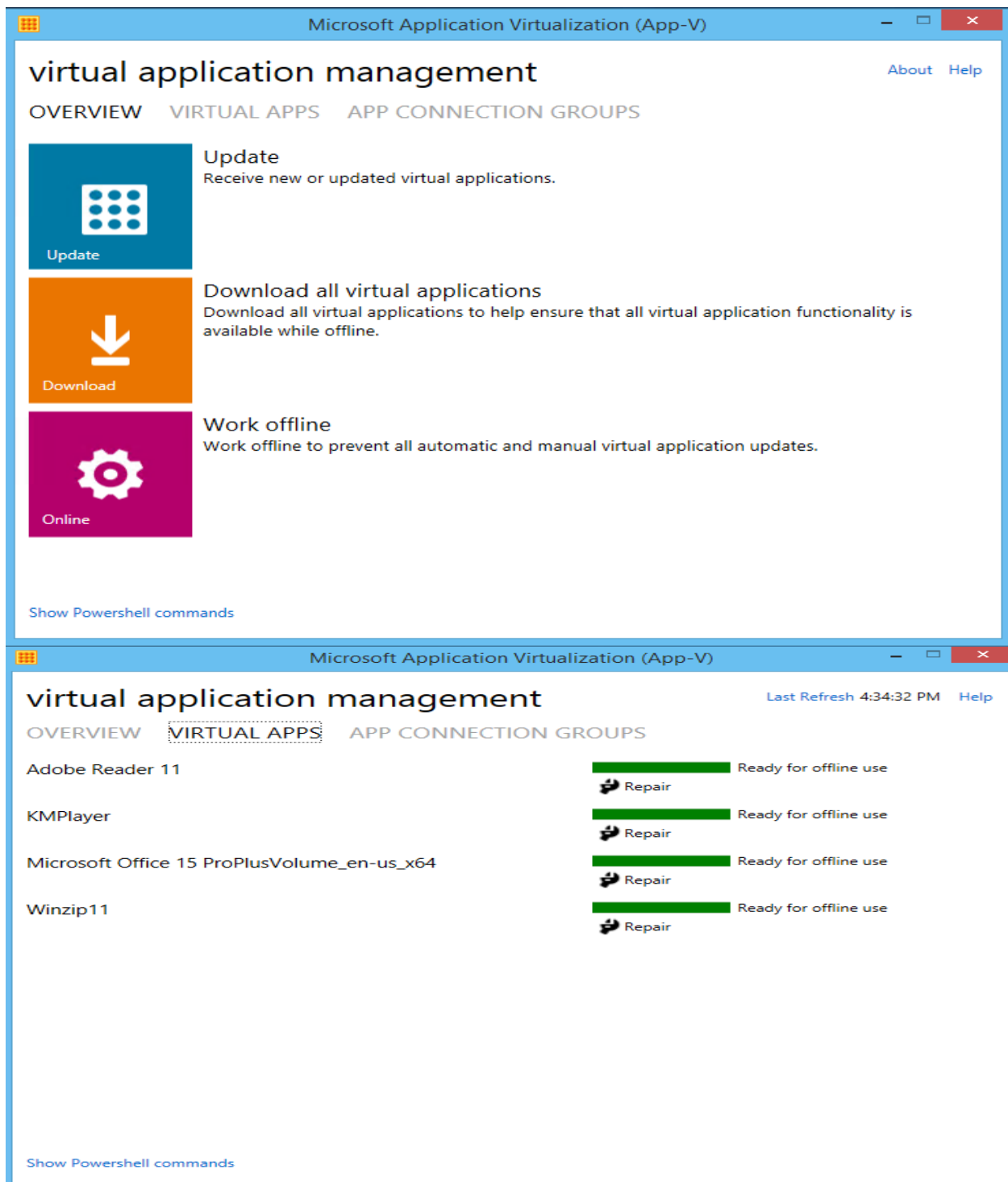
Wait for some time and login to Windows 7 or Windows 8 workstation and check the install status for APPV Client within Software Center.



The virtual apps are installed on the Win 7 & Win 8.







This concludes the process of installing APPV server and deploying virtual apps to w/s.

Thanks

Ram – 30<sup>th</sup> July 2018